

Management Information Pack

Marc Seale, Chief Executive & Registrar
Report of figures for April to October 2012 to
Council



hcpc health & care
professions
council

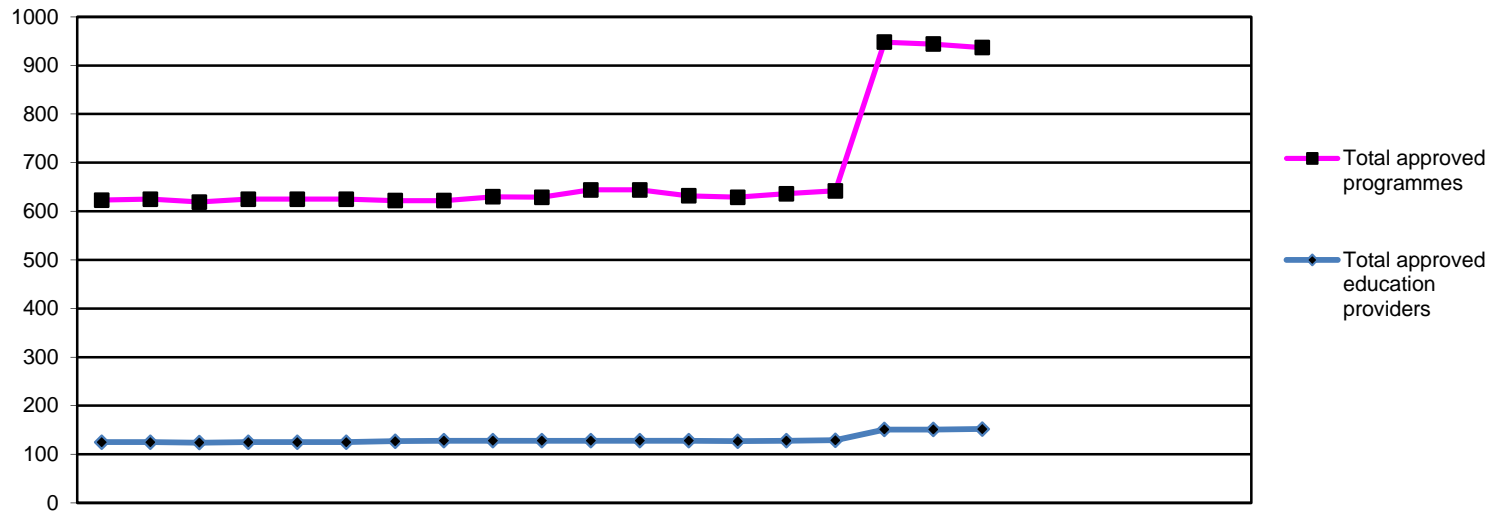
—

e

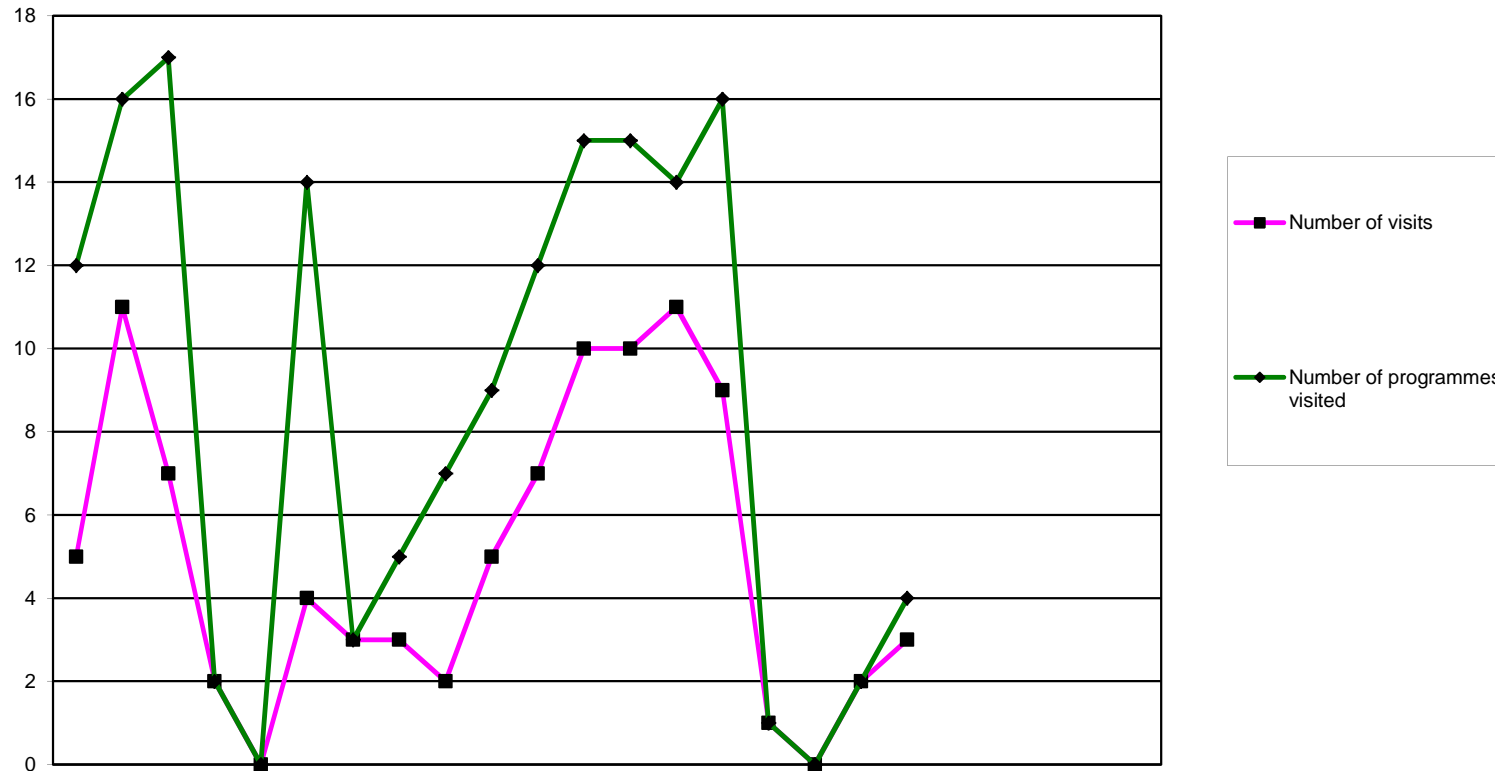
**Management Reporting Information to Council
Health and Care Professions Council
Figures for April to October 2012**

Education	Number of approved programmes, by profession	2a
	Overview of approval visits	2b
	Reasons for visit	2c
	Programme monitoring	2d
	Major change submissions	2e
	Complaints about approved programmes	2f
Feedback	Feedback	3
Finance	Consolidated Income and Expenditure	4a
	Consolidated Income budgeted & actual	4b
	Consolidated Expenditure budgeted & actual	4c
	Consolidated Department Monthly Variances	5
	Consolidated Balance Sheet	6
	Consolidated Cash Flow Actual and Forecast	7
Human Resources	HR Information	8
Information & IT	IT Infrastructure	9
Office Services	Mail Volume	10
Registration	HPC Number of Registrants by Profession	11
Grandparenting Registrations	Grandparent applications workflow process at end of each month	12
	New Grandparent Applications Received	13
	Grandparent Registrations	14
International Registrations	International applications workflow process at end of each month	15
	New International Applications Received	16
	International Registrations	17
	Temporary Registration under EU Directive 2005/36/EC	18
UK Registrations	UK applications workflow process at end of each month	19
	New UK Applications Received	20
	Renewal Information	21
Grandparent, International & UK Registrations	Application Types Received	22
	New Registrants	23
	Registration Telephone Information	24
Continuing Professional Development	Continuing Professional Development process	25
Supplementary prescribing	Number of registrants with supplementary prescribing rights	26

Fitness to Practise	Total Cases Considered	27
	Enquiries and allegations: source	28
	Enquiries and Allegations: Profession & source of complaint	29
	Total Investigating Panel decisions and referrals	30
	Investigating Panel Decisions by profession and source of allegation	31
	Interim Orders by profession	32
	Panel hearings decisions	33
	Final hearings (CCC and HC) representation	34
	Final hearings: decisions by profession	35
	Review hearings: decisions by profession	36
	Length of time: Allegations	37
	Length of time: Cases Investigating Committee 2003-4 to 2012 -13	38
	Allegations made: conclusion of final hearing 2003-4 to 2012 -13	39
	Allegations made: conclusion of final hearing percentages	40
	Allegations made: Investigating Panel 2003-4 to 2012 -13	41
	Allegations made: Investigating Panel percentages	42
	Investigating Panel: Case Conclusion (concluded final hearing cases)	43
	Investigating Panel: Case Conclusion percentages	44
Registration Appeals	Registration Appeals	45
Protection of Title	Protection of Title	46
Health and Character	Health and Character Declarations	47

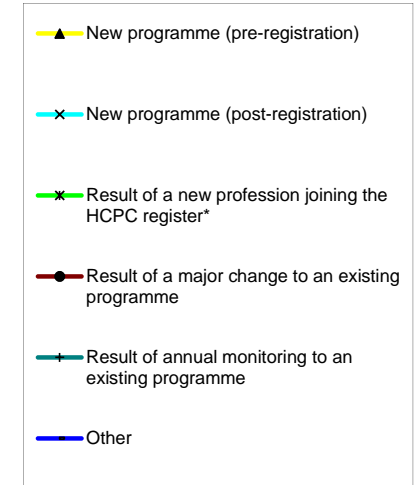
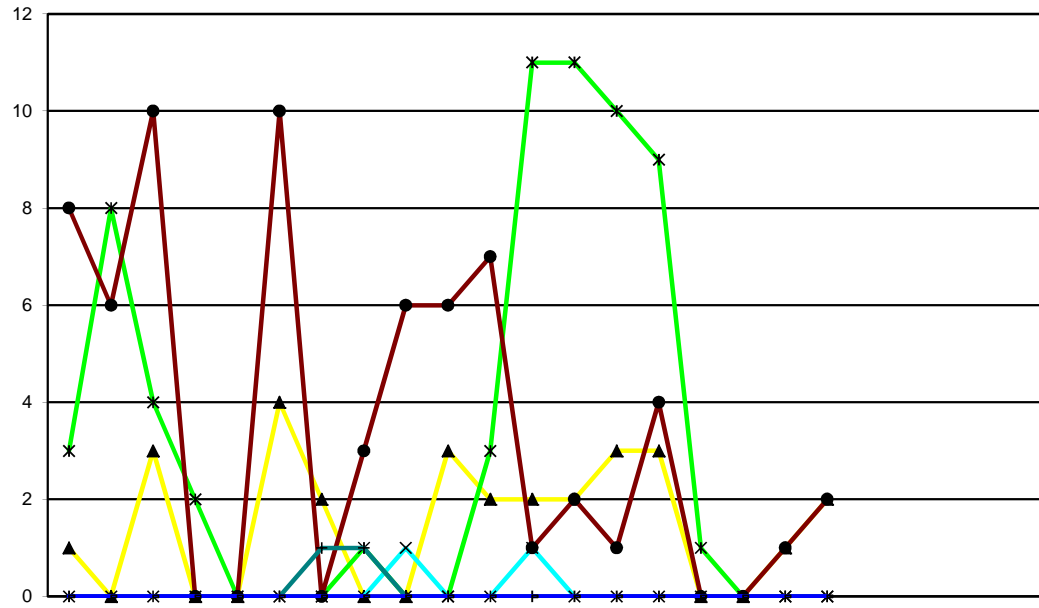


	2011			2012									2013						2011/12	2012/13						
	Apr	May	Jun	Jul	Aug	Sep	Oct	Nov	Dec	Jan	Feb	Mar	Apr	May	Jun	Jul	Aug	Sep	Oct	Nov	Dec	Jan	Feb	Mar	FYE	YTD
Arts therapists	27	27	21	27	27	27	21	21	21	21	21	21	20	20	20	29	29	29	29						21	29
Biomedical scientists	41	41	41	41	41	41	40	40	40	40	49	49	48	51	52	51	51	55	55						49	55
Chiropodists/ Podiatrists	19	19	19	19	19	19	19	19	19	19	20	20	20	20	20	20	20	20	20						20	20
Clinical scientists	1	1	1	1	1	1	1	1	1	1	1	1	1	1	1	1	1	3	3						1	3
Dietitians	33	33	33	33	33	33	33	33	33	33	33	33	33	33	33	33	33	33	32						33	32
Hearing aid dispensers	18	18	16	18	18	18	15	15	15	15	18	18	13	13	14	14	17	17	16						18	16
Occupational therapists	73	74	73	74	74	74	73	73	74	74	74	74	74	74	74	74	74	74	73						74	73
Operating Department Practitioners	32	32	32	32	32	32	34	34	34	34	34	34	32	31	33	33	33	33	33						34	33
Orthoptists	2	2	2	2	2	2	2	2	2	2	3	3	3	3	3	3	3	3	3						3	3
Paramedics	51	50	50	50	50	50	50	50	50	50	50	50	50	48	49	47	48	48	48						50	48
Physiotherapists	68	69	68	69	69	69	67	67	68	67	67	67	65	65	65	65	65	64	63						67	63
Practitioner psychologists	83	83	88	83	83	83	93	93	95	95	95	95	95	94	94	94	94	93	93						95	93
Prosthetists/Orthotists	3	3	3	3	3	3	3	3	3	3	3	3	3	3	3	3	3	3	3						3	3
Radiographers	52	55	52	55	55	55	51	51	55	55	56	56	55	54	54	54	54	54	54						56	54
Social workers in England													271			267			265				265			
Speech and language therapists	32	32	32	32	32	32	32	32	32	32	32	32	32	31	31	31	31	31	31						32	31
Local anaesthesia	2	2	2	2	2	2	2	2	2	2	2	2	2	2	4	4	4	4	4						2	4
Prescription only medicine	8	8	9	8	8	8	9	9	9	9	9	9	9	9	9	9	9	9	9						9	9
Supplementary prescribing	78	76	77	76	76	76	77	77	77	77	77	77	77	77	77	77	77	77	76						77	76
Approved mental health professionals																31			27				27			
Total approved programmes	623	625	619	625	625	625	622	622	630	629	644	644	632	629	636	642	948	944	937						644	937
Total approved education providers	125	125	124	125	125	125	127	128	128	128	128	128	128	127	128	129	151	151	152						128	152



	2011			2012								2013													
	Apr	May	Jun	Jul	Aug	Sep	Oct	Nov	Dec	Jan	Feb	Mar	Apr	May	Jun	Jul	Aug	Sep	Oct	Nov	Dec	Jan	Feb	Mar	
Overview of approval visits																									
Number of visits	5	11	7	2	0	4	3	3	2	5	7	10	10	11	9	1	0	2	3						
Number of programmes visited	12	16	17	2	0	14	3	5	7	9	12	15	15	14	16	1	0	2	4						

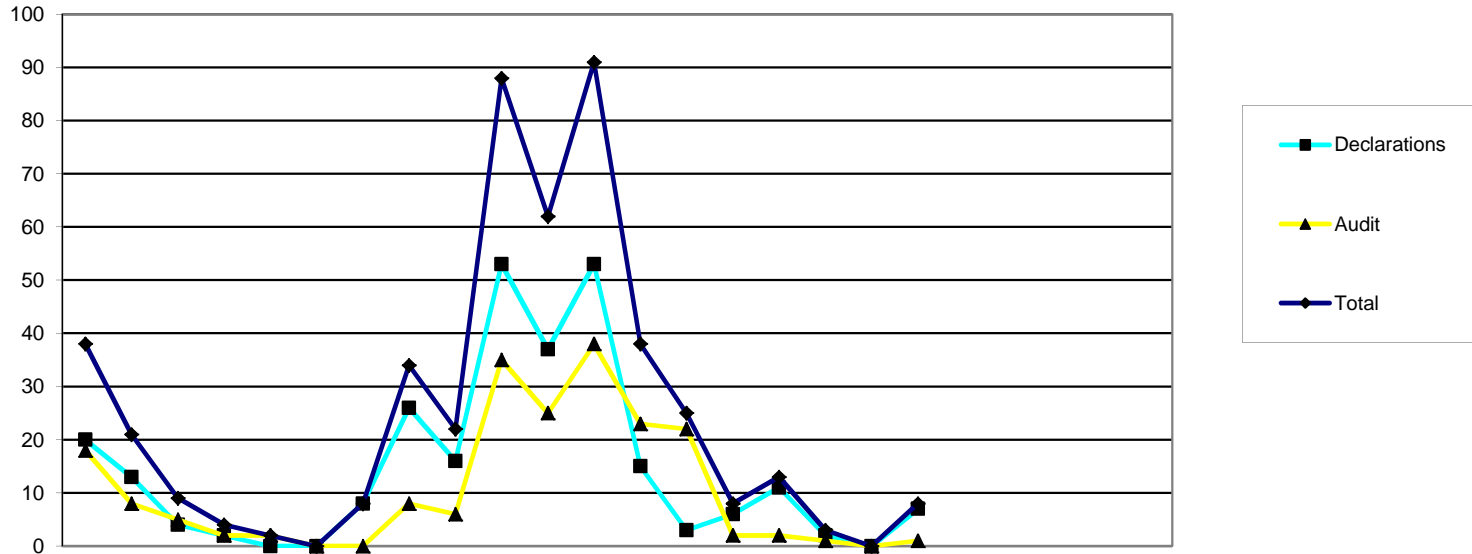
2005/6	2006/7	2007/8	2008/9	2009/10	2010/11	2011/12	2012/13
FYE	FYE	FYE	FYE	FYE	FYE	FYE	YTD
0	101	63	42	38	58	59	36
27	117	68	84	80	101	112	52



Reason for programme visited	2011			2012												2013									
	Apr	May	Jun	Jul	Aug	Sep	Oct	Nov	Dec	Jan	Feb	Mar	Apr	May	Jun	Jul	Aug	Sep	Oct	Nov	Dec	Jan	Feb	Mar	
New programme (pre-registration)	1	0	3	0	0	4	2	0	0	3	2	2	2	3	3	0	0	1	2						
New programme (post-registration)	0	0	0	0	0	0	0	0	1	0	0	1	0	0	0	0	0	0	0						
Result of a new profession joining the HCPC register*	3	8	4	2	0	0	0	1	0	0	3	11	11	10	9	1	0	0	0						
Result of a major change to an existing programme	8	6	10	0	0	10	0	3	6	6	7	1	2	1	4	0	0	1	2						
Result of annual monitoring to an existing programme	0	0	0	0	0	0	1	1	0	0	0	0	0	0	0	0	0	0	0						
Other	0	0	0	0	0	0	0	0	0	0	0	0	0	0	0	0	0	0	0						
Total	12	14	17	2	0	14	3	5	7	9	12	15	15	14	16	1	0	2	4						

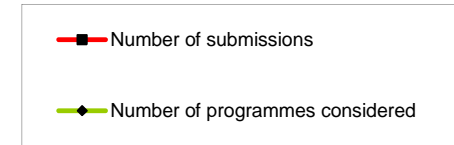
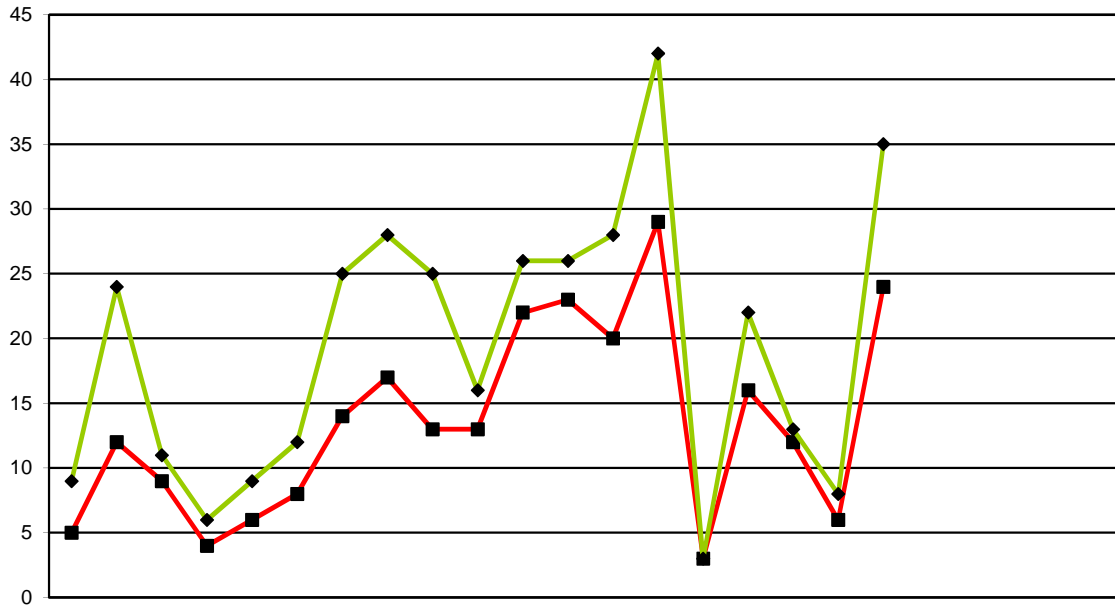
2005/6	2006/7	2007/8	2008/9	2009/10	2010/11	2011/12	2012/13
FYE	FYE	FYE	FYE	FYE	FYE	FYE	YTD
0	18	32	21	25	29	17	11
7	29	1	7	1	0	2	0
5	16	4	0	7	31	32	31
5	32	26	53	42	37	57	10
5	1	3	3	3	4	2	0
5	21	2	0	2	0	0	0
27	117	68	84	80	101	110	52

* - Practitioner psychologists July 2009 - July 2012
 - Hearing Aid Dispensers April 2010 - July 2012
 - Social workers in England August 2012 - July 2015



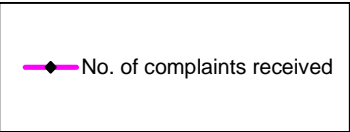
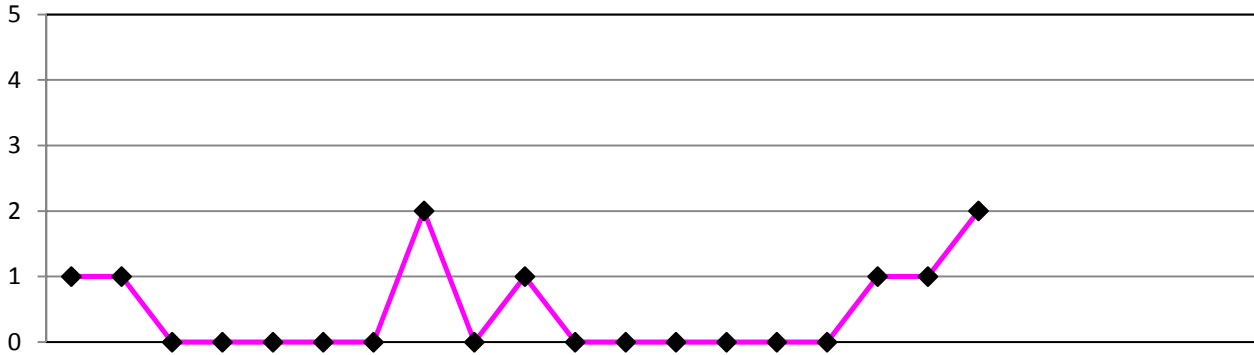
Annual monitoring submissions	2011			2012												2013									
	Apr	May	Jun	Jul	Aug	Sep	Oct	Nov	Dec	Jan	Feb	Mar	Apr	May	Jun	Jul	Aug	Sep	Oct	Nov	Dec	Jan	Feb	Mar	
Declarations	20	13	4	2	0	0	8	26	16	53	37	53	15	3	6	11	2	0	7						
Audit	18	8	5	2	2	0	0	8	6	35	25	38	23	22	2	2	1	0	1						
Total	38	21	9	4	2	0	8	34	22	88	62	91	38	25	8	13	3	0	8						

2005/6	2006/7	2007/8	2008/9	2009/10	2010/11	2011/12	2012/13
FYE	FYE	FYE	FYE	FYE	FYE	FYE	YTD
113	94	143	167	105	232	232	44
51	184	135	136	123	257	147	51
164	278	278	303	228	489	379	95



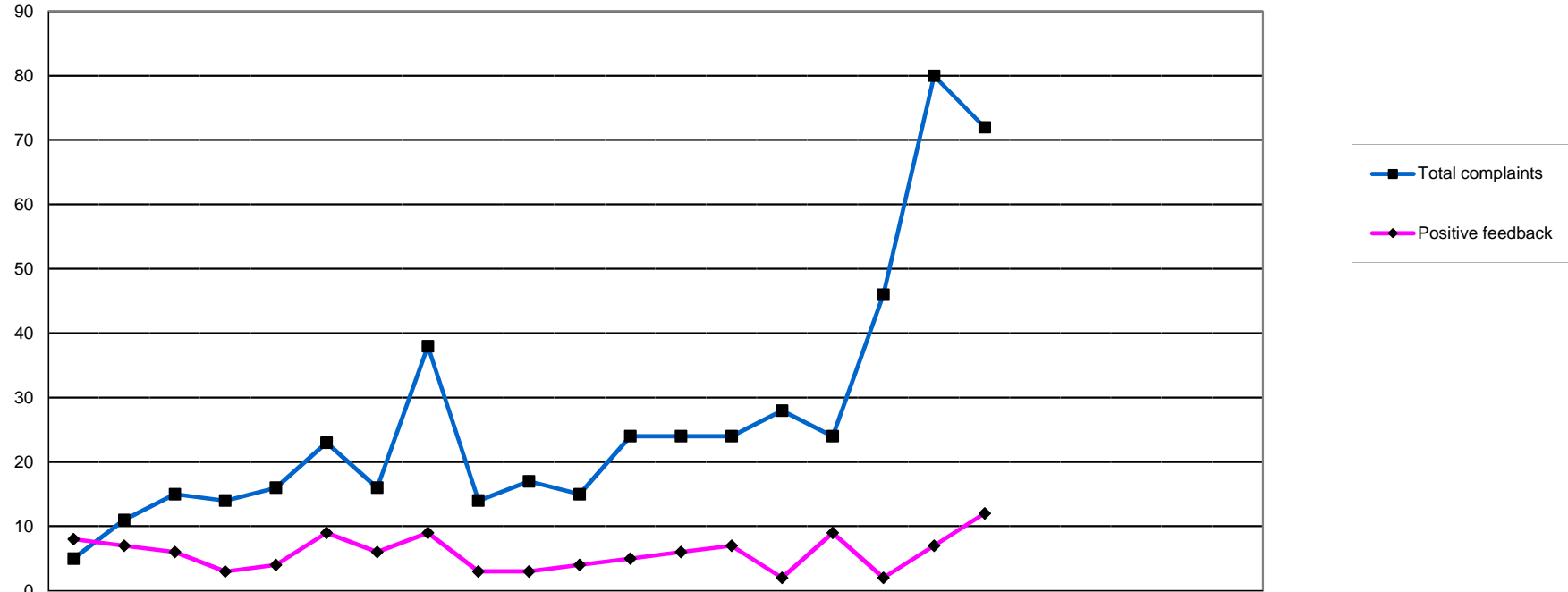
	2011			2012						2013															
	Apr	May	Jun	Jul	Aug	Sep	Oct	Nov	Dec	Jan	Feb	Mar	Apr	May	Jun	Jul	Aug	Sep	Oct	Nov	Dec	Jan	Feb	Mar	
Major change submissions																									
Number of submissions	5	12	9	4	6	8	14	17	13	13	22	23	20	29	3	16	12	6	24						
Number of programmes considered	9	24	11	6	9	12	25	28	25	16	26	26	28	42	3	22	13	8	35						

2005/6	2006/7	2007/8	2008/9	2009/10	2010/11	2011/12	2012/13
FYE	FYE	FYE	FYE	FYE	FYE	FYE	YTD
16	51	62	66	115	104	146	110
25	97	109	141	179	169	217	151



		2011			2012						2013														
		Apr	May	Jun	Jul	Aug	Sep	Oct	Nov	Dec	Jan	Feb	Mar	Apr	May	Jun	Jul	Aug	Sep	Oct	Nov	Dec	Jan	Feb	Mar
No. of complaints received		1	1	0	0	0	0	0	2	0	1	0	0	0	0	0	0	1	1	2					
Complaints outcomes	Directed visit	0	0	0	0	0	0	0	0	0	0	0	0	0	0	0	0	0	0	0					
	Approval process	0	0	0	0	0	0	0	1	0	0	0	0	0	0	0	0	0	0	0					
	Major change process	0	1	0	0	0	0	0	0	0	0	0	0	0	0	0	0	0	0	0					
	Annual monitoring process	0	0	0	0	0	0	0	0	0	0	0	0	0	0	0	0	0	0	0					
	Withdrawn	0	0	0	0	0	0	0	0	0	0	0	0	0	0	0	0	0	0	0					
	Unsubstantiated	1	0	0	0	0	0	0	1	0	1	0	0	0	0	0	0	1	0	2					
	Pending	0	0	0	0	0	0	0	0	0	0	0	0	0	0	0	0	0	0	0					

	2009/10 FYE	2010/11 FYE	2011/12 FYE	2012/13 FYE
No. of complaints received	6	5	5	4
No. of approved progs	480	623	644	632
% progs affected by complaints	1.3%	0.8%	0.8%	0.6%



	2011			2012									2013									2005/6	2006/7	2007/8	2008/9	09/10	10/11	11/12	12/13		
	Apr	May	Jun	Jul	Aug	Sep	Oct	Nov	Dec	Jan	Feb	Mar	Apr	May	Jun	Jul	Aug	Sep	Oct	Nov	Dec	Jan	Feb	Mar	FYE	FYE	FYE	FYE	FYE	FYE	FYE
Application process	0	0	0	0	0	2	2	0	1	3	3	15	5	5	3	2	8	5	6	39	23	28	29	4	39	26	34				
Registration process	4	7	14	12	15	18	13	35	11	13	7	5	13	17	20	11	26	66	61	169	88	122	361	163	136	154	214				
External comms	0	1	0	0	0	0	0	0	0	0	0	1	0	0	1	3	3	4	0	24	6	6	4	1	1	2	11				
Responsiveness	0	0	0	0	0	0	0	0	0	0	0	0	0	0	0	0	0	0	0	6	2	0	0	2	0	0	0				
Partner management	0	0	0	0	0	0	0	0	0	0	0	0	0	0	0	0	0	0	0	0	4	2	4	4	8	0	0				
Rules/legislation	0	1	1	0	0	0	0	0	0	0	0	1	3	0	1	0	5	2	0	17	11	10	3	5	0	3	11				
Other	1	2	0	2	1	3	1	3	2	1	5	2	3	2	3	8	4	3	5	7	16	18	44	45	38	23	28				
Total complaints	5	11	15	14	16	23	16	38	14	17	15	24	24	24	28	24	46	80	72	262	262	186	445	224	222	208	298				
Positive feedback	8	7	6	3	4	9	6	9	3	3	4	5	6	7	2	9	2	7	12	187	19	27	37	81	79	67	45				

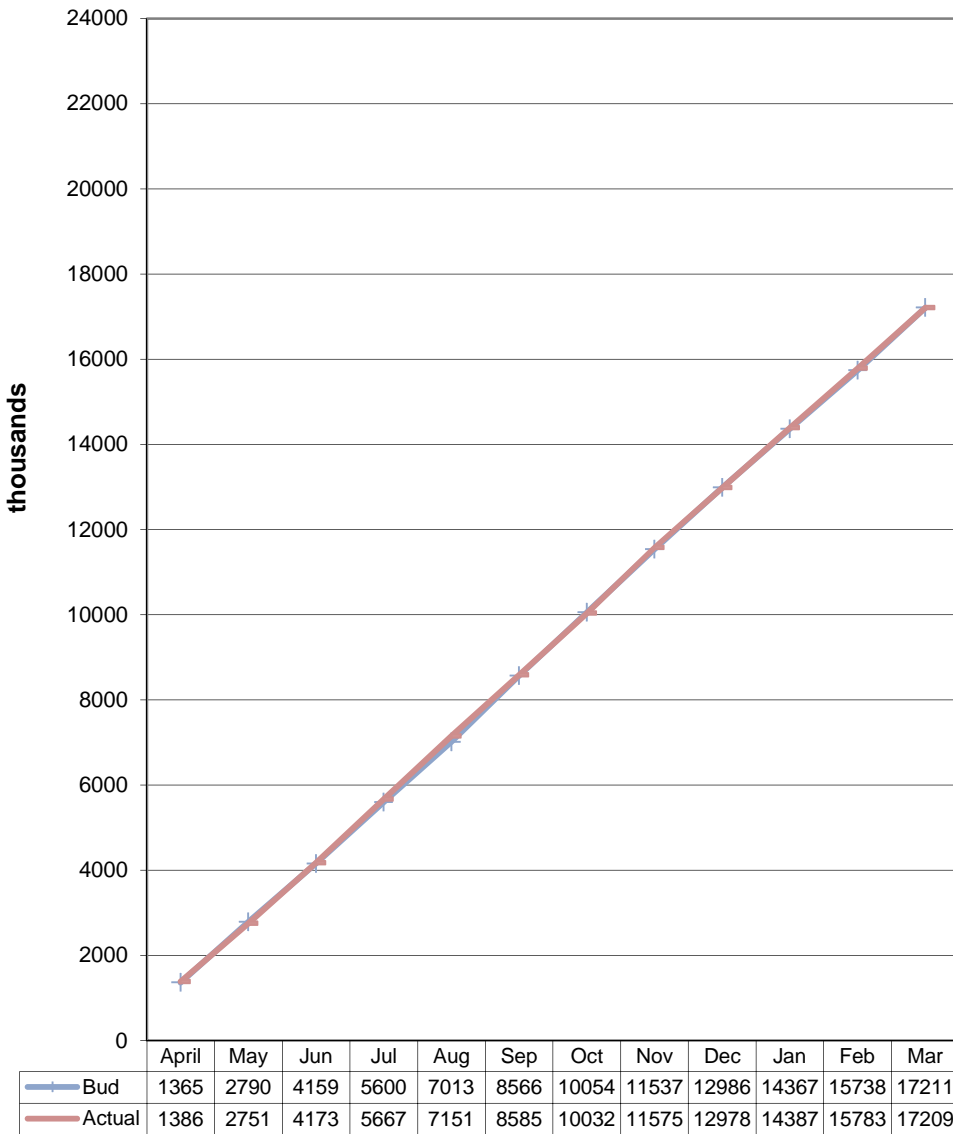
Health Professions Council

Income and Expenditure

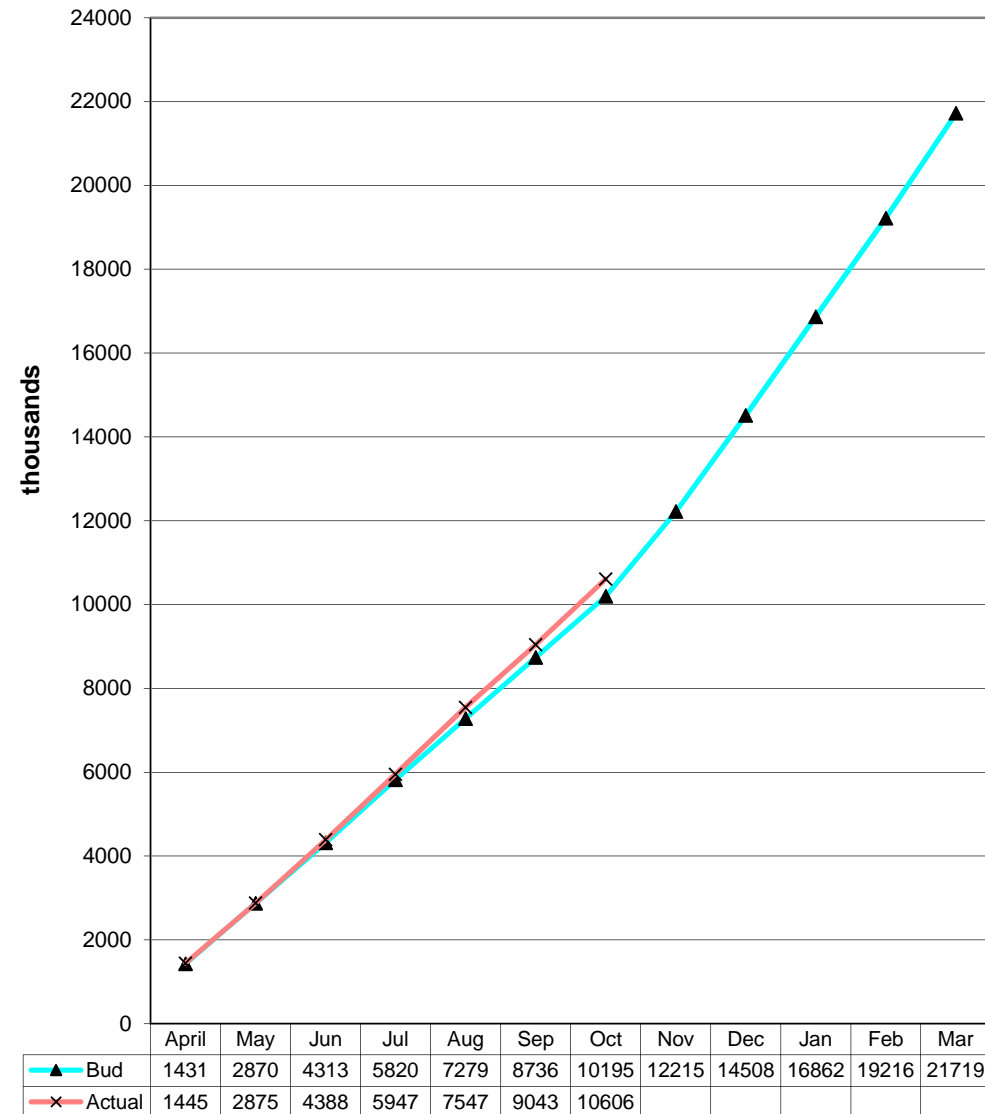
Finance Department

	2012					2013							Total to YTD £000	Budget YTD £000	Variance £000	Annual Budget £000
	April £000	May £000	Jun £000	Jul £000	Aug £000	Sep £000	Oct £000	Nov £000	Dec £000	Jan £000	Feb £000	Mar £000				
INCOME																
Registration Income	1,445	1,430	1,513	1,559	1,600	1,496	1,563						10,606	10,195	411	19,831
Cheque/credit card write off															0	
TOTAL INCOME	1,445	1,430	1,513	1,559	1,600	1,496	1,563	0	0	0	0	0	10,606	10,195	411	19,831
EXPENDITURE																
Chair	4	8	3	5	6	6	5						38	41	3	80
Chief Executive	19	40	43	36	56	29	33						256	235	(22)	385
Council & Committees	0	17	23	24	1	39	30						135	173	38	346
Communications	70	123	31	66	69	98	139						596	601	5	1,133
Depreciation	68	75	69	69	82	73	75						510	456	(54)	762
Education	71	83	79	58	55	62	73						482	588	106	1,013
Facilities Management	79	169	37	137	91	76	103						694	675	(19)	1,185
Finance	62	57	57	50	48	69	72						415	440	25	719
Fitness to Practise	584	611	555	559	695	739	711						4,454	4,879	425	9,874
Human Resources & Partners	66	35	57	56	37	43	70						365	423	58	856
IT Department	119	92	72	99	118	119	98						719	714	(4)	1,227
Major Projects	28	4	108	(11)	(3)	0	2						128	131	3	587
Operations Office	52	45	82	47	52	58	67						402	344	(58)	332
Policy	20	23	17	18	16	18	19						131	145	14	266
Registration	156	170	164	293	346	173	255						1,557	1,567	10	2,347
Secretariat	15	11	21	17	14	18	20						116	167	50	281
TOTAL EXPENDITURE	1,413	1,562	1,420	1,526	1,683	1,621	1,775	0	0	0	0	0	10,999	11,577	578	21,393
OPERATING SURPLUS/(DEFICIT)	32	(132)	93	33	(83)	(125)	(211)	0	0	0	0	0	(393)	(1,381)	989	(1,562)
Grant income	0	0	0	0	490	0	43						533	0	533	(1,750)
Costs relating to the transfer of GSCC	13	108	144	109	33	0	(1)						406	455	49	477
Costs relating to the name change	0	11	35	45	14	8	0						114	142	28	142
Social Workers FTP	4	41	50	37	72	131	89						424	632	207	0
Employee Costs - GSCC staff transfer	0	0	0	7	23	1	0						31	0	(31)	0
Costs Relating to Herbal Medicine	0	0	0	0	6	0	0						6	0	(6)	
Investment Income	0	1	12	0	0	10	28						51	0	(51)	0
TOTAL SURPLUS/(DEFICIT)	15	(291)	(125)	(165)	258	(255)	(229)	0	0	0	0	0	(791)	(2,611)	1,820	(431)

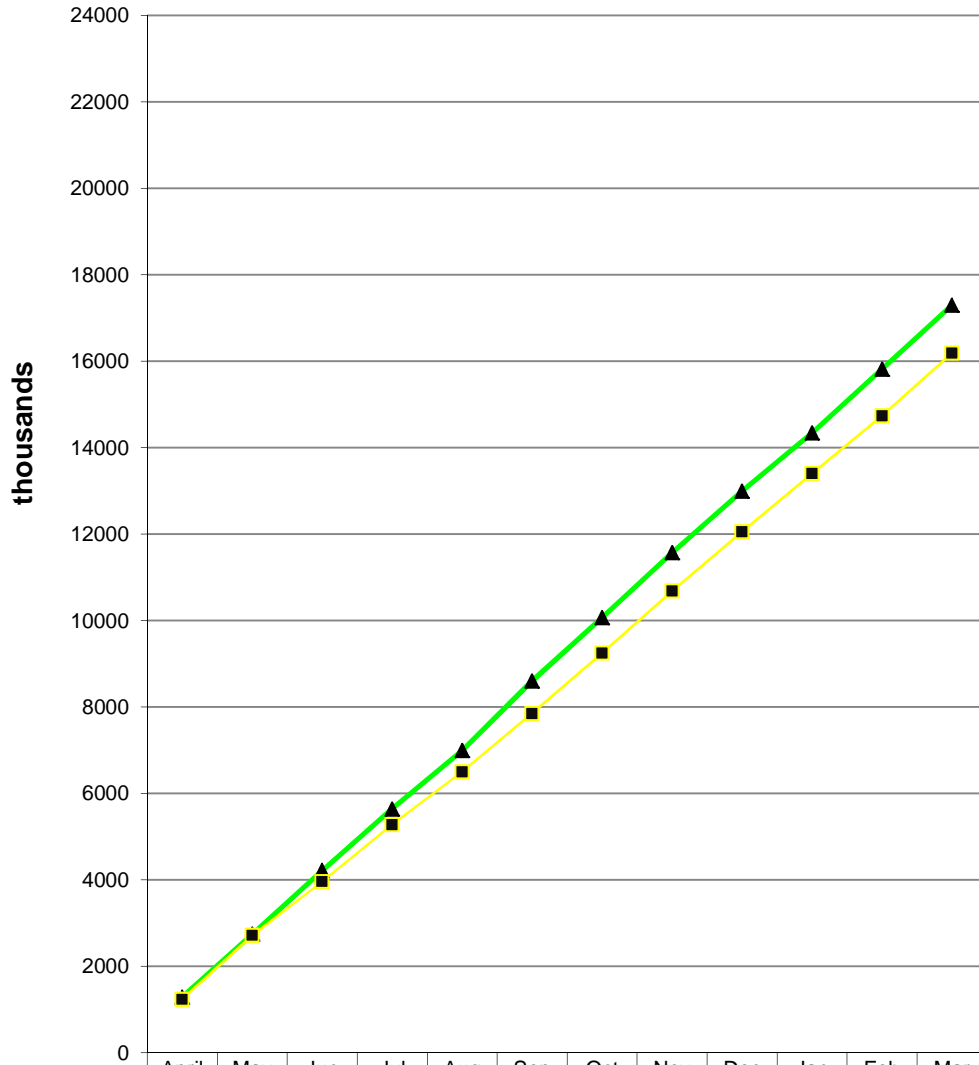
Income 2011/12 budgeted & actual



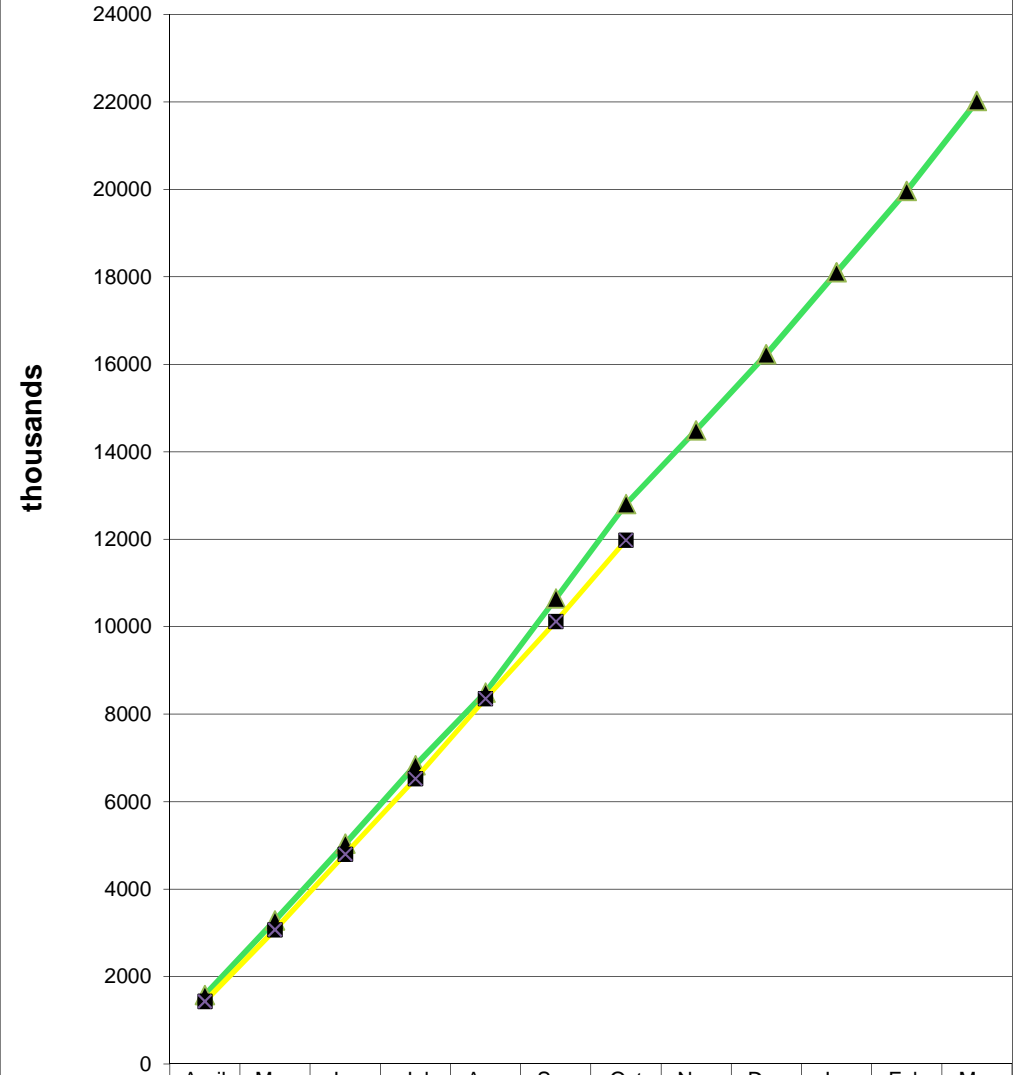
Income 2012/13 budgeted & actual



Expenditure 2011/12 budgeted & actual



Expenditure 2012/3 budgeted & actual



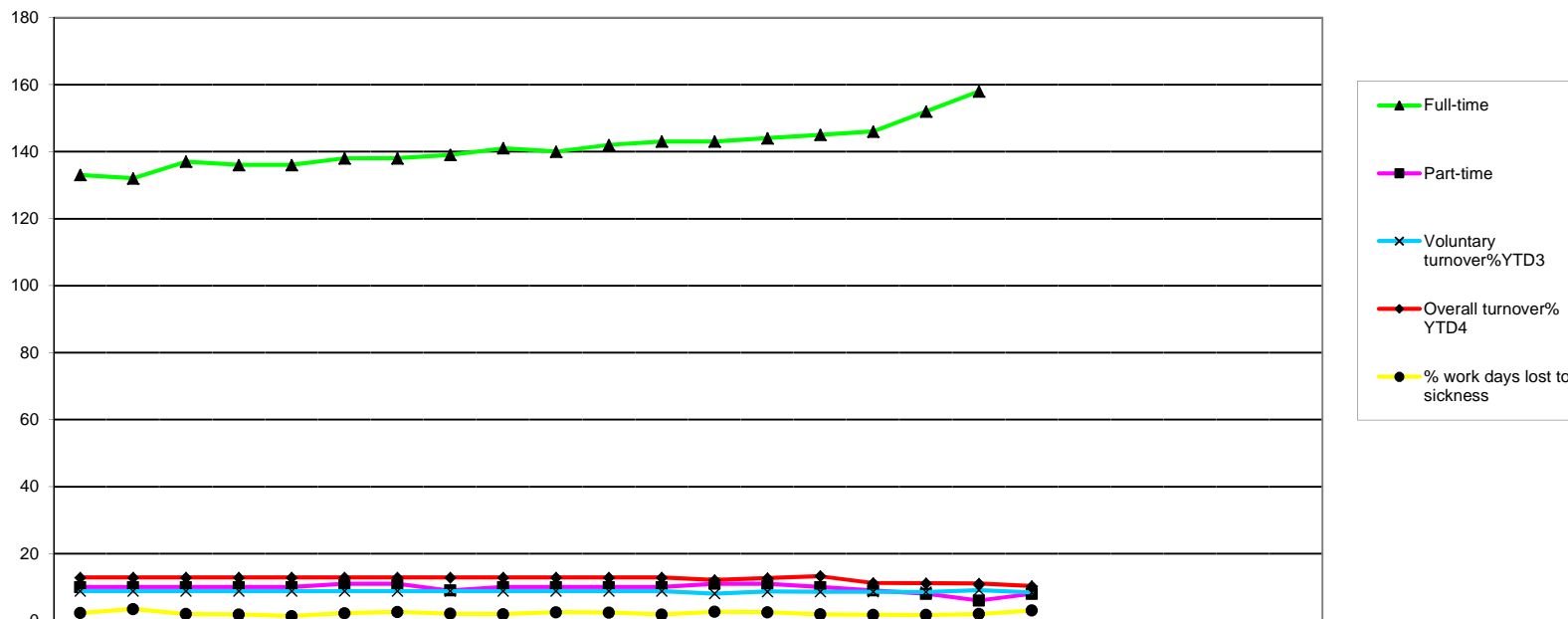
	2012								2013				Total to £000	Budget £000	Total Expenditure £000
	April	May	Jun	Jul	Aug	Sep	Oct	Nov	Dec	Jan	Feb	Mar			
	£000	£000	£000	£000	£000	£000	£000	£000	£000	£000	£000	£000			
EXPENDITURE															
Chair	2	(2)	3	1	(0)	(0)	0						3	41	38
Chief Executive	8	(15)	(18)	(6)	9	3	(3)						(22)	235	256
Council & Committees	11	3	13	(4)	6	(3)	13						38	173	135
Communications	(13)	(17)	44	31	(7)	(4)	(29)						5	601	596
Depreciation	(2)	(9)	(4)	(5)	(18)	(9)	(7)						(54)	456	510
Education	9	17	14	23	18	14	10						106	588	482
Facilities Management	5	(21)	4	(38)	9	23	(1)						(19)	675	694
Finance	2	9	5	11	15	(6)	(11)						25	440	415
Fitness to Practise	63	84	42	80	(86)	125	116						425	4,879	4,454
Human Resources & Partners	6	30	(48)	23	7	20	20						58	423	365
IT Department	(20)	8	34	0	(18)	(10)	2						(4)	714	719
Major Projects	(2)	5	(33)	1	35	(0)	(2)						3	131	128
Operations Office	1	(4)	3	(1)	(32)	(7)	(19)						(58)	344	402
Policy	(21)	74	(72)	22	1	5	6						14	145	131
Registration	38	50	(50)	(132)	82	19	4						10	1,567	1,557
Secretariat	7	12	4	6	9	8	5						50	167	116
TOTAL BUDGET VARIANCE	94	223	(61)	13	29	177	103	0	0	0	0	0	578	11,577	10,999
TOTAL MONTHLY BUDGET	1,507	1,785	1,359	1,539	1,712	1,798	1,878	0	0	0	0	0			11,577
TOTAL EXPENDITURE	1,413	1,562	1,420	1,526	1,683	1,621	1,775	0	0	0	0	0			10,999

	<i>Actual</i> £000	2012							2013					
		April £000	May £000	Jun £000	Jul £000	Aug £000	Sep £000	Oct £000	Nov £000	Dec £000	Jan £000	Feb £000	Mar £000	
Non-current Assets														
Property, Plant and Machinery		3,369	3,359	3,399	3,395	3,398	3,405	3,398						
Intangible assets		1,670	1,631	1,581	1,578	1,540	1,477	1,420						
TOTAL FIXED ASSETS		5,039	4,990	4,980	4,973	4,938	4,882	4,818	0	0	0	0	0	
CURRENT ASSETS														
Other current assets		604	705	607	623	860	442	455						
Financial assets		7,964	7,064	7,363	6,880	8,168	10,762	11,108						
Bank & Cash														
	0	8,568	7,769	7,970	7,503	9,028	11,204	11,563	0	0	0	0	0	
CURRENT LIABILITIES														
Trade and other payables		(529)	(875)	(354)	(707)	(525)	(544)	(567)						
Other Liabilities		(1,220)	(934)	(1,358)	(1,065)	(1,322)	(1,393)	(1,360)						
Deferred income		(9,932)	(9,294)	(9,717)	(9,349)	(10,505)	(12,790)	(13,324)						
	0	(11,681)	(11,103)	(11,429)	(11,121)	(12,352)	(14,727)	(15,251)	0	0	0	0	0	
Total assets less liabilities	0	1,926	1,656	1,521	1,355	1,614	1,359	1,130	0	0	0	0	0	
Represented by:														
Revaluation Reserve		0	0	0	0	0	0	0	0	0				
Income and expenditure account		1,926	1,656	1,521	1,355	1,614	1,359	1,130						
	0	1,926	1,656	1,521	1,355	1,614	1,359	1,130	0	0	0	0	0	

* Balance sheet includes investment income

	Actual Mar 12 £000	2012							2013					Total £000	
		April £000	May £000	Jun £000	Jul £000	Aug £000	Sep £000	Oct £000	Nov £000	Dec £000	Jan £000	Feb £000	Mar £000		
Opening Balance		8,709	7,964	7,064	7,363	6,880	8,168	10,762							
Registration Income		1,445	1,430	1,513	1,559	1,600	1,496	1,564							10,607
Investment Income		1	0	12	0	0	10	28							51
Investment Sales		0	0	0	0	0	0	0							0
Deferred Income Movements		(562)	(641)	424	(366)	1,135	2,305	534							2,829
Department of Health funding		0	0	0	0	0	490	43							533
Total Cash Receipts		884	789	1,949	1,193	2,735	4,301	2,169	0	0	0	0	0		14,020
Expenditure		1,430	1,712	1,659	1,724	1,831	1,761	1,863							11,980
Depreciation		(72)	(72)	(68)	(68)	(82)	(72)	(75)							(509)
Asset disposal / writeoff		0	0	0	0	0	0	0							0
Aged Cred / Accrual Movements		29	(60)	77	(60)	103	(247)	10							(148)
Debtor Movements		88	101	(98)	17	(453)	272	13							(60)
Payments to Creditors		1,475	1,681	1,570	1,614	1,399	1,714	1,811	0	0	0	0	0		11,264
Capital Expenditure		154	8	80	62	47	(2)	9							358
Capital write-off		0	0	0	0	0	0	0							0
Investment Purchases		0	0	0	0	0	0	0							0
Other Payments		154	8	80	62	47	(2)	9	0	0	0	0	0		358
Closing Balance		7,964	7,064	7,363	6,880	8,168	10,762	11,108	0	0	0	0	0		

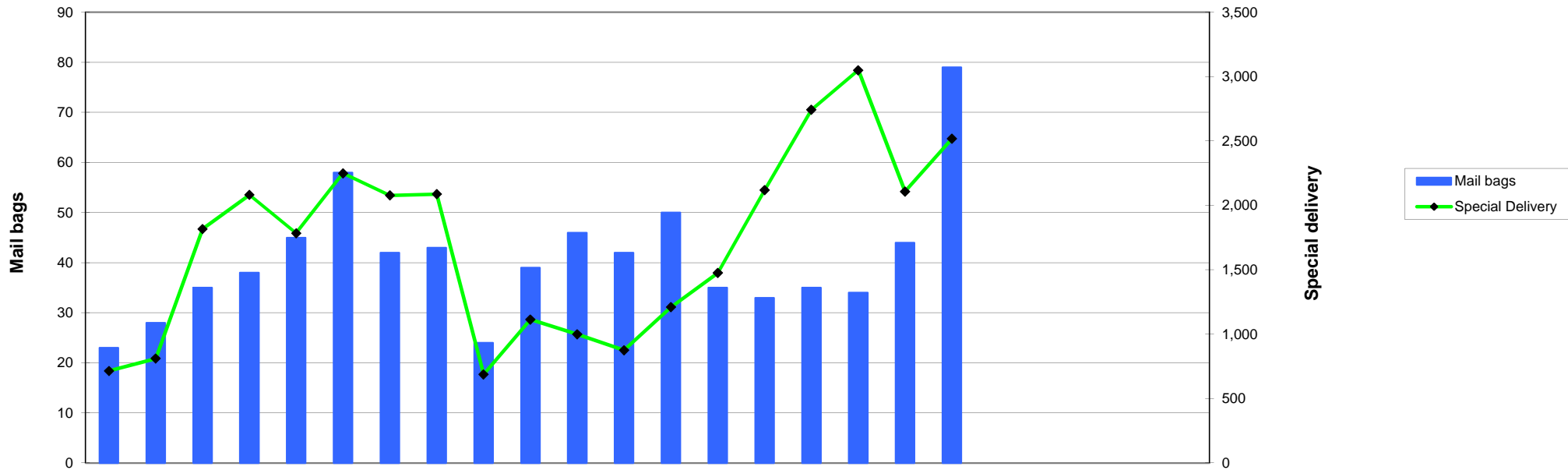
* Cash flow includes investment income



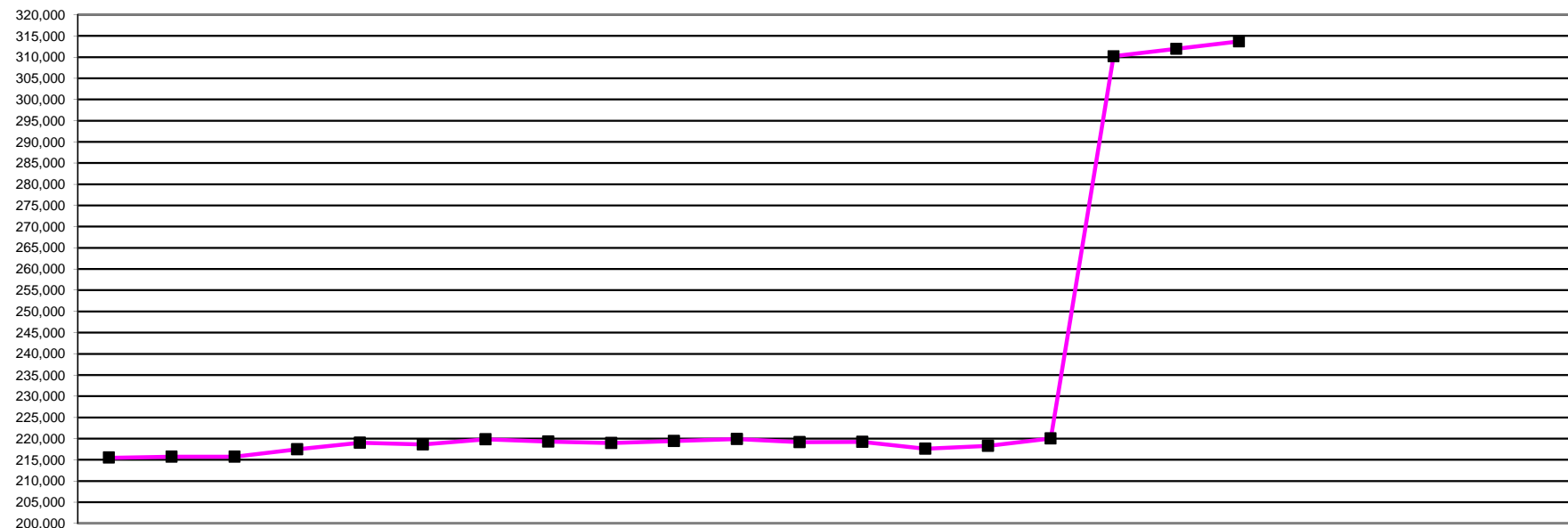
	2011			2012									2013											
	Apr	May	Jun	Jul	Aug	Sep	Oct	Nov	Dec	Jan	Feb	Mar	Apr	May	Jun	Jul	Aug	Sep	Oct	Nov	Dec	Jan	Feb	Mar
EMPLOYEES																								
Budgeted employees	148	148	148	148	148	148	148	148	148	148	148	148	165	165	165	165	186	186	186	186	186	186	186	186
Total employees	143	142	147	146	146	149	149	149	151	151	152	153	154	155	155	155	160	164	169					
Full-time	133	132	137	136	136	138	138	139	141	141	142	143	143	144	145	146	152	158	161					
Part-time	10	10	10	10	10	11	11	9	10	10	10	10	11	11	10	9	8	6	8					
FTE	142	140	145	144	144	145	145	148	149	149	149	151	152	153	153	153	159	163	168					
Permanent	139	139	138	139	138	139	138	136	141	144	150	142	146	147	148	148	154	159	166					
Fixed-Term Contracts	4	5	9	7	8	10	11	14	8	9	10	11	8	8	7	7	6	5	3					
Starters (permanent)	0	0	0	0	0	0	0	0	2	0	0	2	0	2	2	1	7	4	4					
Starters (fixed-term)	0	2	7	2	2	4	1	1	2	1	1	1	2	1	0	0	0	1	1					
Voluntary resignations¹	2	1	1	1	2	0	2	0	1	1	1	1	1	2	1	1	2	1	1					
Compulsory leavers ²	0	0	0	3	0	1	0	1	1	0	0	0	0	0	0	1	0	0	0					
Total leavers (vol. & comp.)	2	1	1	4	2	1	2	1	2	1	1	1	1	2	2	1	2	1	1					
Voluntary turnover%YTD³	9	9	9	9	9	9	9	9	9	9	9	9	8	9	9	9	9	9	8					
Overall turnover% YTD ⁴	13	13	13	13	13	13	13	13	13	13	13	13	12	13	13	11	11	11	10					
Agency days	55	36	22	31	46	87	91	76	21	21	27	56	60	124	204	434	573	501	588					
% work days lost to sickness	2	3	2	2	1	2	3	2	2	2	2	2	3	2	2	2	2	2	3					
Average sick-days YTD	6	6	6	6	6	6	6	6	6	6	6	6	6	5	5	5	5	5	6					
Sick-days	69	106	63	55	43	71	80	67	57	71	76	61	84	88	60	58	59	71	112					
O.H. Refs	1	1	0	2	1	2	1	1	3	2	1	0	3	4	1	4	1	2	1					

2005/6	2006/7	2007/8	2008/9	09/10	10/11	11/12	11/12
FYE	FYE	FYE	FYE	FYE	FYE	FYE	YTD
			124	132	144	148	186
78	79	107	116	136	142	153	169
73	75	104	113	124	131	143	161
5	4	3	3	5	11	10	8
76	77	106	115	127	140	151	168
74	78	101	113	126	134	142	166
4	1	5	4	3	8	11	3
6	46	42	36	37	15	4	20
	1	13	7	8	10	24	5
3	20	17	22	22	10	13	9
	1	8	3	3	5	6	1
-	21	25	25	25	15	19	10
*	30	26	19	16	7	9	8
	-	-	20	20	11	13	10
95	2590	2742	1,149	1385	360	568	2482
*	4	3	4	3	2	2	2
			8	7	7	6	5
846	795	777	847	943	843	819	532
0	18	19	27	10	13	15	16

¹ Voluntary Resignations:
² Compulsory Leavers:
³ Voluntary Turnover YTD:
⁴ Overall Turnover:
 FTE



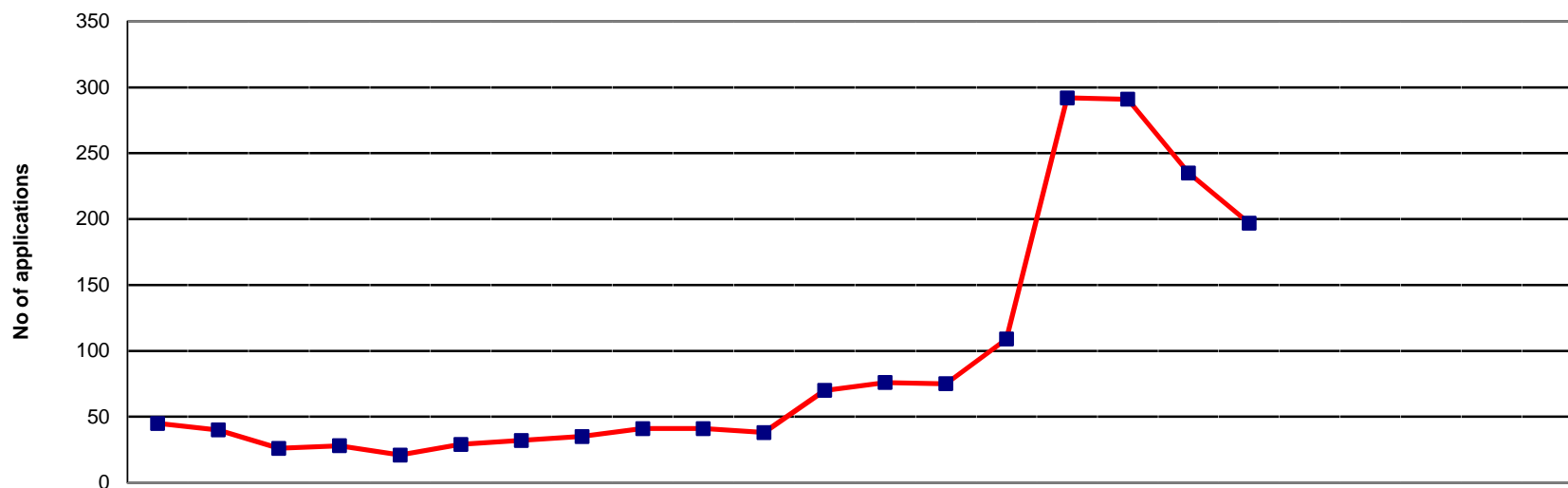
	2011			2012									2013									2005/6	2006/7	2007/8	2008/9	09/10	10/11	11/12	12/13				
	Apr	May	Jun	Jul	Aug	Sep	Oct	Nov	Dec	Jan	Feb	Mar	Apr	May	Jun	Jul	Aug	Sep	Oct	Nov	Dec	Jan	Feb	Mar	FYE	FYE	FYE	FYE	FYE	FYE	FYE	YTD	
Mail bags	23	28	35	38	45	58	42	43	24	39	46	42	50	35	33	35	34	44	79														
Special Delivery	715	811	1,818	2,082	1,785	2,250	2,078	2,088	688	1,114	1,000	876	1,210	1,476	2,119	2,743	3,050	2,108	2,518														
																									13,641	10,469	19,076	20,383	24,787	19,187	17,305	15,224	



	2011			2012									2013						2007/8	2008/9	09/10	10/11	11/12	12/13							
	Apr	May	Jun	Jul	Aug	Sep	Oct	Nov	Dec	Jan	Feb	Mar	Apr	May	Jun	Jul	Aug	Sep	Oct	Nov	Dec	Jan	Feb	Mar	FYE	FYE	FYE	FYE	FYE	YTD	
AS	2,913	2,913	2,928	2,948	2,986	3,013	3,047	3,073	3,098	3,111	3,127	3,121	3,127	2,893	2,914	2,967	3,039	3,072	3,102							2,509	2,576	2,785	2,900	3,121	3,102
BS	22,668	22,662	22,746	22,814	22,835	22,815	22,765	22,625	21,690	21,790	21,860	21,886	21,886	21,904	21,925	21,988	22,115	22,183	22,217							21,560	22,381	21,894	22,626	21,886	22,217
CH	12,740	12,743	12,759	12,833	12,944	12,984	13,013	13,023	13,023	13,004	13,007	13,005	13,000	12,963	12,949	13,005	12,554	12,662	12,705							13,055	12,581	12,897	12,737	13,005	12,705
CS	4,666	4,682	4,704	4,699	4,686	4,498	4,524	4,564	4,584	4,609	4,637	4,665	4,679	4,725	4,728	4,735	4,754	4,749	4,755							4,183	4,405	4,444	4,622	4,665	4,755
DT	7,348	7,360	7,402	7,537	7,632	7,663	7,709	7,724	7,731	7,745	7,760	7,782	7,789	7,776	7,777	7,579	7,731	7,784	7,820							6,663	6,700	7,160	7,323	7,782	7,820
HAD	1,591	1,596	1,596	1,619	1,644	1,652	1,667	1,684	1,694	1,703	1,713	1,772	1,724	1,731	1,725	1,758	1,694	1,725	1,748										1,587	1,772	1,748
OT	32,186	32,240	32,334	32,514	32,808	32,757	32,802	31,399	31,591	31,705	31,840	31,946	31,928	32,120	32,187	32,454	32,879	33,044	33,171							28,107	30,122	30,351	32,134	31,946	33,171
ODP	10,339	10,336	10,381	10,398	10,463	10,684	10,814	10,831	10,863	10,899	10,910	10,929	10,929	10,966	10,978	11,001	11,089	11,303	11,424							9,458	9,587	10,085	10,314	10,929	11,424
OR	1,302	1,303	1,295	1,296	1,304	1,268	1,279	1,281	1,286	1,285	1,288	1,286	1,286	1,284	1,282	1,291	1,313	1,316	1,322							1,239	1,278	1,260	1,303	1,286	1,322
PA	16,861	16,926	17,003	17,086	17,210	17,083	17,377	17,559	17,652	17,714	17,829	17,913	17,935	17,997	18,032	18,162	18,340	18,661	18,883							13,703	15,019	15,766	16,785	17,913	18,883
PH	45,061	45,147	45,322	45,722	46,096	46,247	46,354	46,533	46,618	46,689	46,699	46,516	46,479	44,514	44,785	45,402	45,908	46,125	46,332							42,490	42,676	44,651	45,002	46,516	46,332
PYL	17,209	17,211	16,451	16,711	16,799	16,916	17,172	17,444	17,557	17,656	17,761	17,845	17,864	18,015	18,072	18,156	18,271	18,415	18,775									15,583	17,161	17,845	18,775
PO	905	903	906	908	912	865	870	878	884	890	890	893	894	897	910	917	923	923	930							832	877	869	901	893	930
RA	26,616	26,616	26,767	27,202	27,413	27,535	27,651	27,712	27,697	27,569	27,470	26,480	26,533	26,666	26,807	27,245	27,542	27,652	27,751							23,541	25,318	25,195	26,614	26,480	27,751
SW*																	88,474	88,678	88,992											88,992	
SL	13,118	13,130	13,159	13,244	13,307	12,663	12,805	12,965	13,020	13,066	13,127	13,173	13,175	13,214	13,253	13,390	13,608	13,660	13,776							11,375	12,169	12,371	13,086	13,173	13,776
Total	215,523	215,768	215,753	217,531	219,039	218,643	219,849	219,295	218,988	219,435	219,918	219,212	219,228	217,665	218,324	220,050	310,234	311,952	313,703							178,715	185,689	205,311	215,095	219,212	313,703

NOTE: Information captured last day of each calendar month

*Social worker section of register opened 1st Aug 2012 (covers England only)

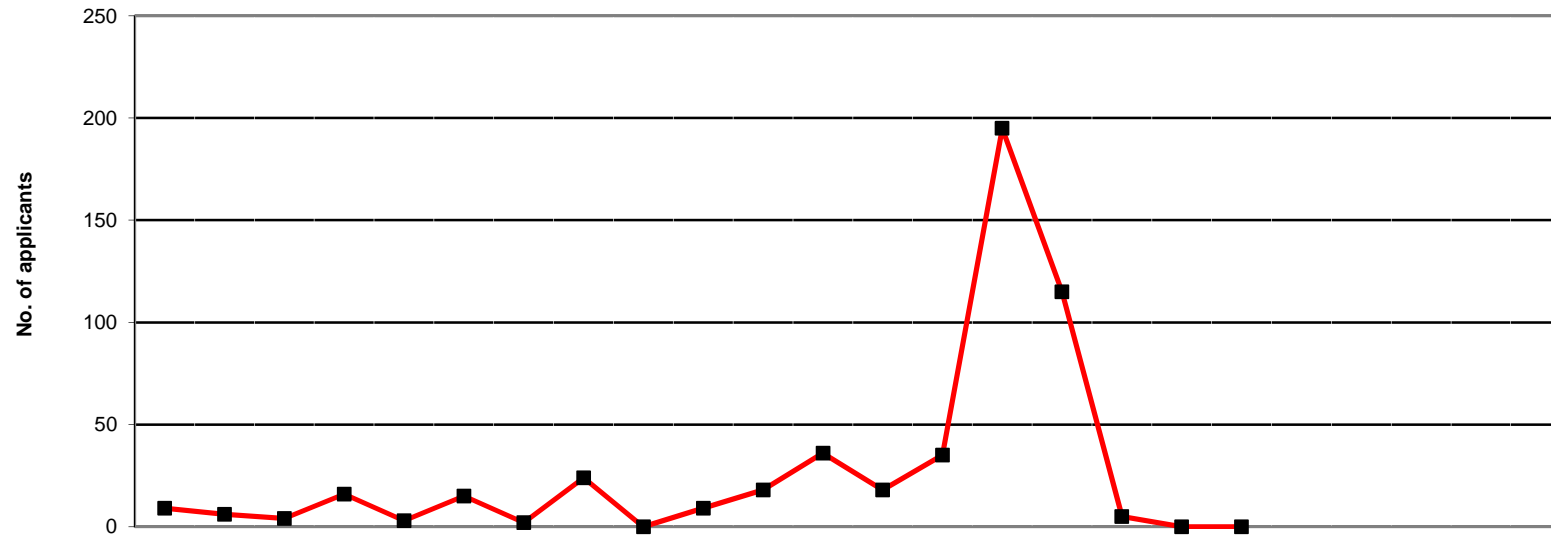


Current status	2011			2012									2013									11/12	12/13				
	Apr	May	Jun	Jul*	Aug	Sep	Oct	Nov	Dec	Jan	Feb	Mar	Apr	May	Jun	Jul	Aug	Sep	Oct	Nov	Dec	Jan	Feb	Mar	FYE	YTD	
Minimum info	1	1	1	0	0	1	1	4	1	2	5	30	32	31	60	129	28	20	13							4	45
At scrutiny	35	32	21	24	19	25	28	28	33	33	30	33	39	39	45	153	247	182	162							28	124
Pending reg fee	9	7	4	4	2	3	3	3	7	6	3	7	5	5	4	10	16	33	22							5	14
Total	45	40	26	28	21	29	32	35	41	41	38	70	76	75	109	292	291	235	197							37	182
																										Average	Average

NOTE: Information covers grandparenting applications status progress only

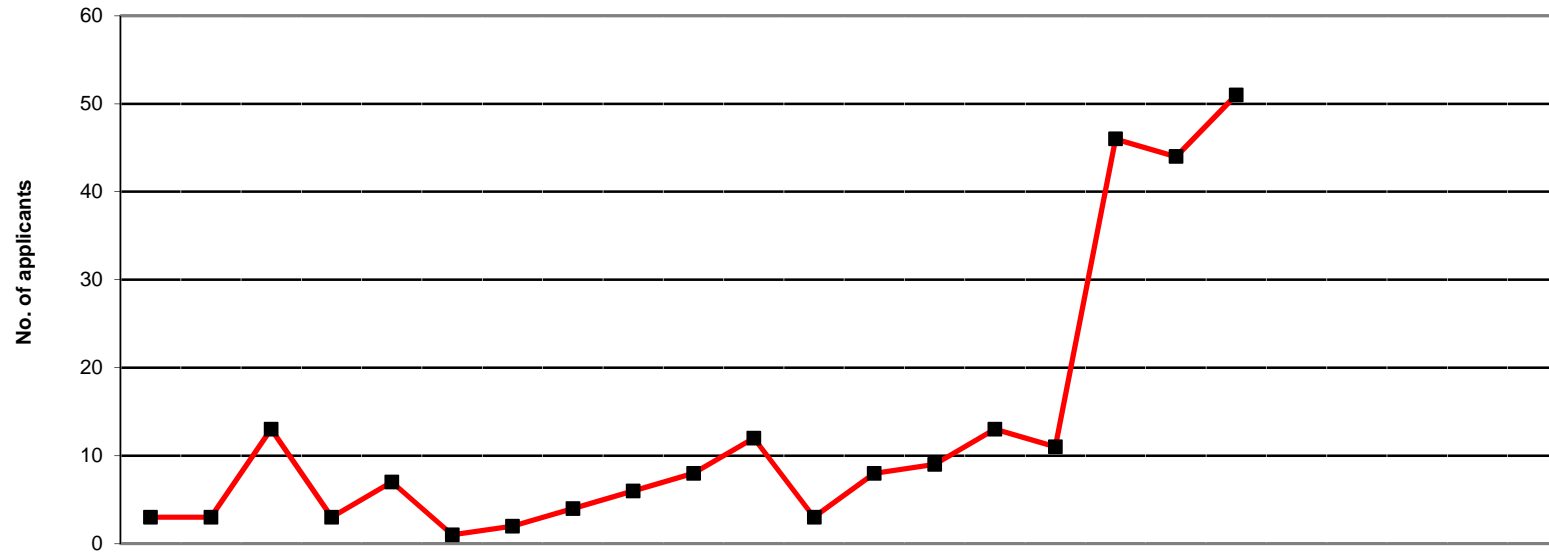
Represents the current workload within the grandparenting section as at the end of the month

No new forms accepted after delivery of first post 2nd July 2012



	2011			2012									2013									09/10	10/11	11/12	12/13							
	Apr	May	Jun	Jul	Aug	Sep	Oct	Nov	Dec	Jan	Feb	Mar	Apr	May	Jun	Jul	Aug	Sep	Oct	Nov	Dec	Jan	Feb	Mar	FYE	FYE	FYE	YTD				
Practitioner psychologists *	9	6	4	16	3	15	2	24	0	9	18	36	18	35	195	115	5	0	0	0	0	0	0	0	0	0	0	0	93	170	142	368

* Practitioner psychologists section of register opened 1st July 2009
 No new forms accepted after delivery of first post 2nd July 2012

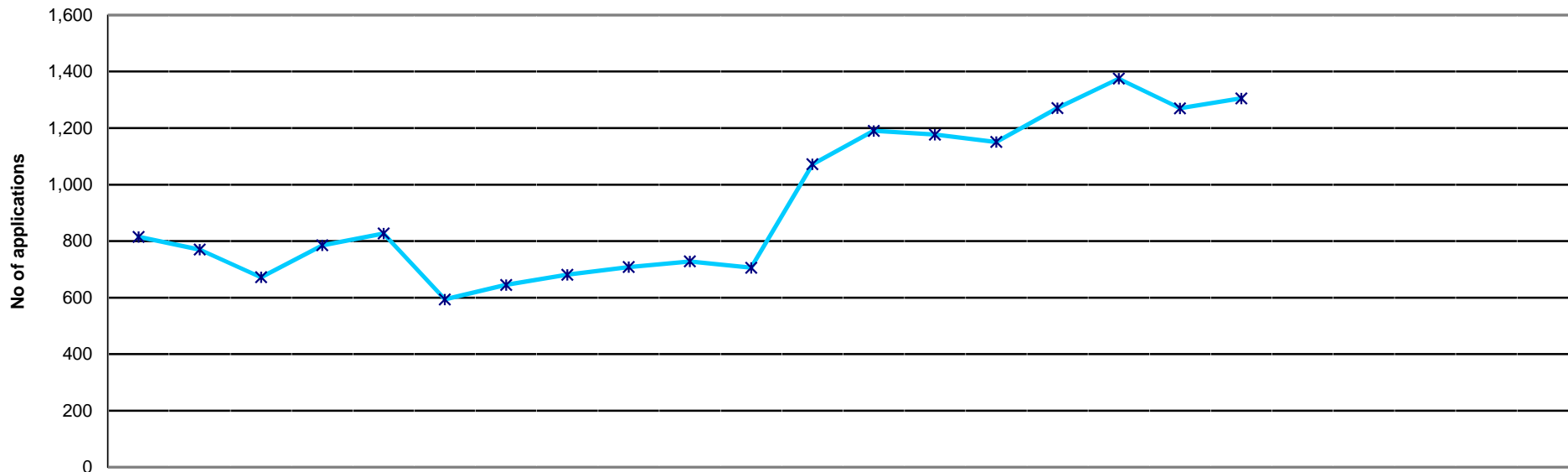


	2011			2012									2013											
	Apr	May	Jun	Jul	Aug	Sep	Oct	Nov	Dec	Jan	Feb	Mar	Apr	May	Jun	Jul	Aug	Sep	Oct	Nov	Dec	Jan	Feb	Mar
Practitioner psychologists *		3	3	13	3	7	1	2	4	6	8	12	3	8	9	13	11	46	44	51				

09/10	10/11	11/12	12/13
FYE	FYE	FYE	YTD
63	96	65	182

* Practitioner psychologists section of register opened 1st July 2009
 No new forms accepted after delivery of first post 2nd July 2012

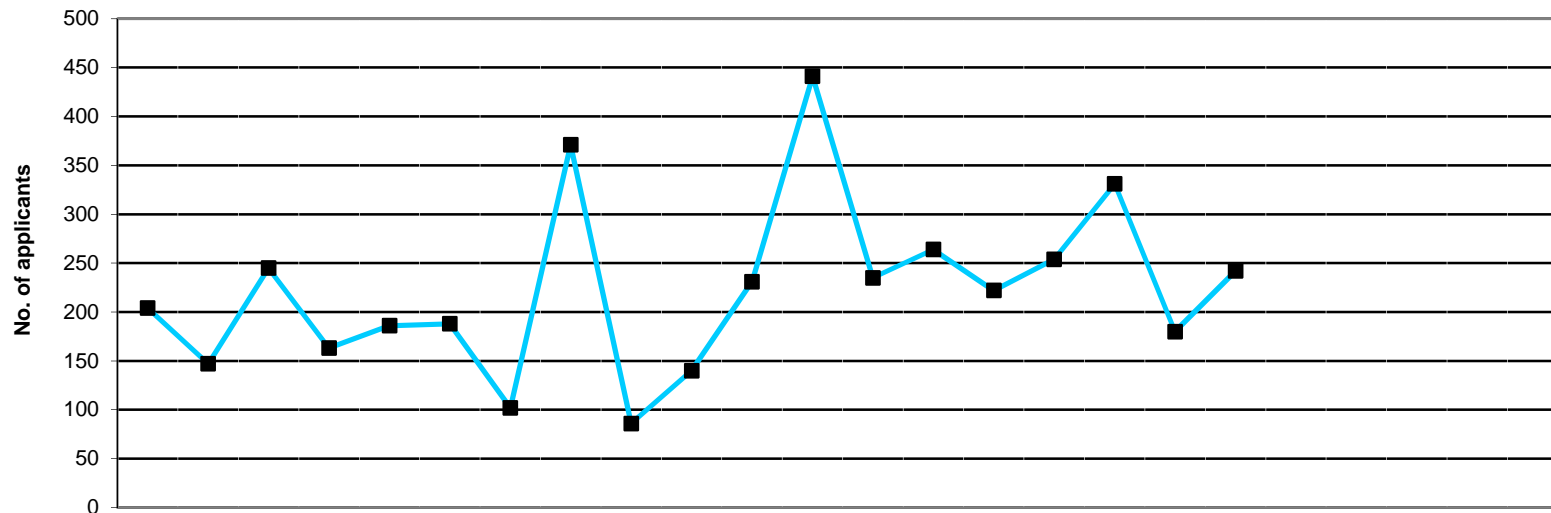
Health and Care Professions Council International applications workflow process at end of each month April 2011 - March 2013 Registration Department



Current status	2011			2012									2013											
	Apr	May	Jun	Jul	Aug	Sep	Oct	Nov	Dec	Jan	Feb	Mar	Apr	May	Jun	Jul	Aug	Sep	Oct	Nov	Dec	Jan	Feb	Mar
Minimum info	61	73	100	23	35	49	62	77	26	43	20	315	358	399	304	392	316	318	347					
At scrutiny	531	515	400	590	619	373	416	433	498	488	489	529	586	572	616	661	827	684	730					
Pending reg fee	223	182	172	172	173	172	167	171	184	197	197	228	246	206	231	218	232	268	228					
Total	815	770	672	785	827	594	645	681	708	728	706	1,072	1,190	1,177	1,151	1,271	1,375	1,270	1,305					

11/12 FYE	12/13 YTD
74	348
490	668
187	233
750	1,248
Average	

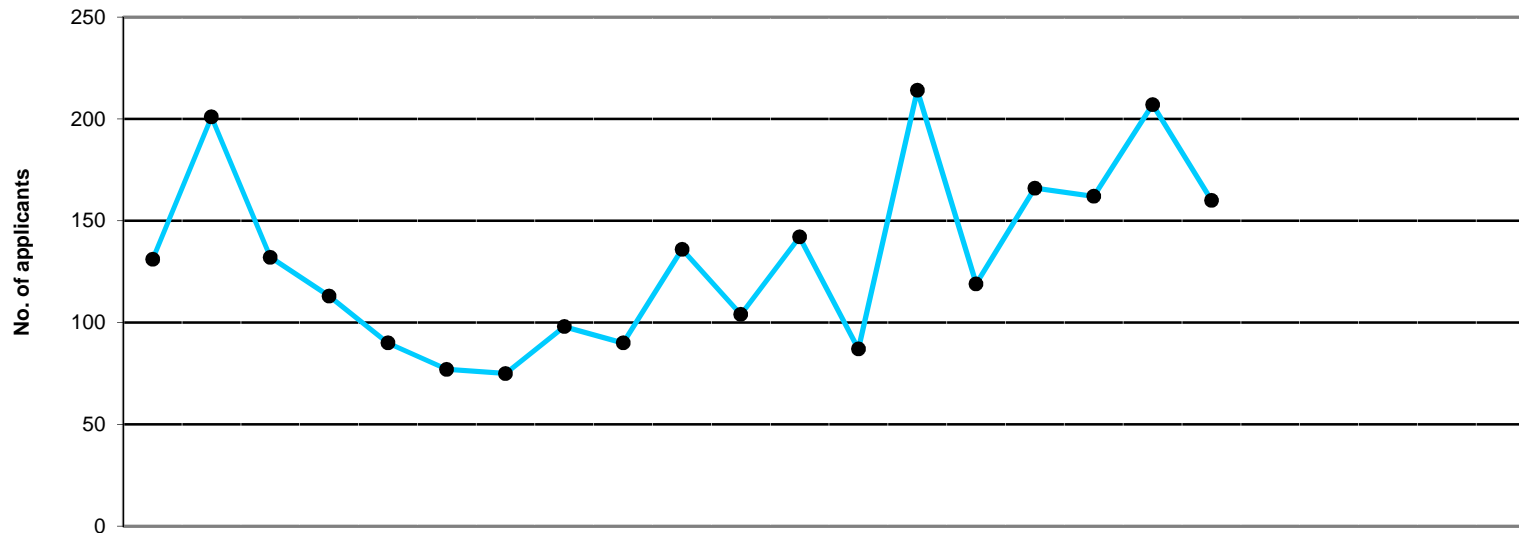
NOTE: Information covers international applications status progress only
Represents the current workload within the International Department as at the end of the month



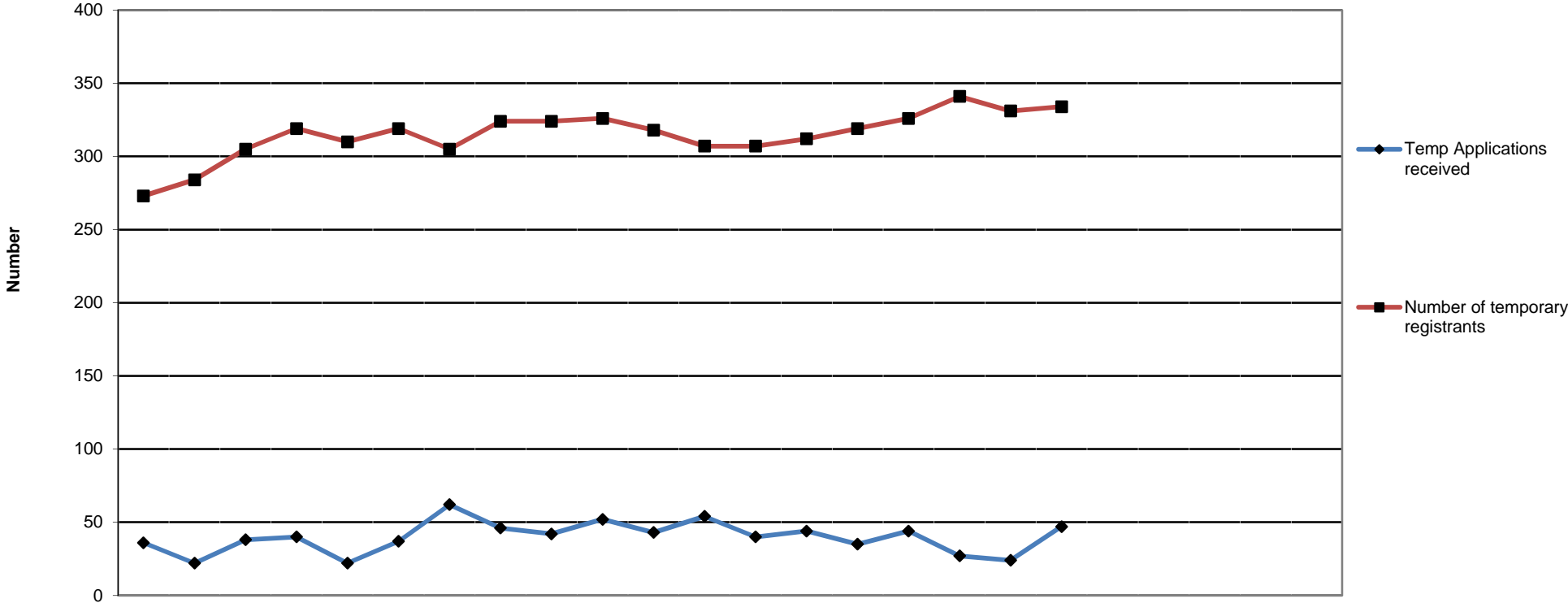
	2011			2012									2013						2008/9	09/10	10/11	11/12	12/13							
	Apr	May	Jun	Jul	Aug	Sep	Oct	Nov	Dec	Jan	Feb	Mar	Apr	May	Jun	Jul	Aug	Sep	Oct	Nov	Dec	Jan	Feb	Mar	FYE	FYE	FYE	FYE	YTD	
Arts Therapists	1	0	4	1	1	1	3	6	2	1	2	1	4	2	0	1	2	1	1						16	12	23	23	11	
Bio. Scientists	13	9	18	16	14	16	8	38	3	17	22	23	14	32	26	36	20	14	25						307	290	273	197	167	
Chirops/ Pods	3	3	3	3	3	2	1	4	1	1	4	3	0	2	2	1	4	1	4						23	34	25	31	14	
CI Scientists	6	6	5	5	9	5	0	10	2	4	5	17	8	13	9	14	5	3	4						50	61	72	74	56	
Dietitians	9	11	10	12	9	10	7	25	5	3	17	30	16	25	12	13	16	7	12						132	137	139	148	101	
Hearing aid disps	2	0	0	1	0	2	0	1	0	1	1	2	2	1	1	2	1	0	1								6	10	8	
OTs	21	22	29	10	21	31	13	39	9	22	24	65	17	26	29	29	31	26	41						404	340	381	306	199	
ODPs	1	2	1	1	1	1	0	2	1	0	1	1	0	1	1	1	3	3	3						8	10	9	12	12	
Orthoptists	0	0	0	2	0	1	0	0	1	0	0	0	1	1	0	1	1	0	1						3	1	5	4	5	
Paramedics	3	2	3	6	5	5	4	4	0	3	1	4	5	4	5	5	5	3	8						46	50	39	40	35	
Physiotherapists	71	55	97	49	69	51	26	137	36	42	83	158	97	97	73	72	70	48	70						774	745	796	874	527	
Pract psychs	16	12	20	14	20	18	6	26	8	8	10	30	23	21	17	27	16	13	9							156	236	188	126	
Prosth/Orthotists	2	0	0	1	1	1	1	1	0	0	2	1	0	1	1	1	2	0	2						9	3	10	10	7	
Radiographers	34	15	43	28	22	25	20	55	13	25	41	76	29	27	33	37	27	24	29						364	312	417	397	206	
Social workers*																	113	17	24											154
SLTs	22	10	12	14	11	19	13	23	5	13	18	30	19	11	13	14	15	20	8						154	173	166	190	100	
Total	204	147	245	163	186	188	102	371	86	140	231	441	235	264	222	254	331	180	242						2,290	2,324	2,597	2,504	1,728	

All received applications, including those that may subsequently be returned, rejected or withdrawn.

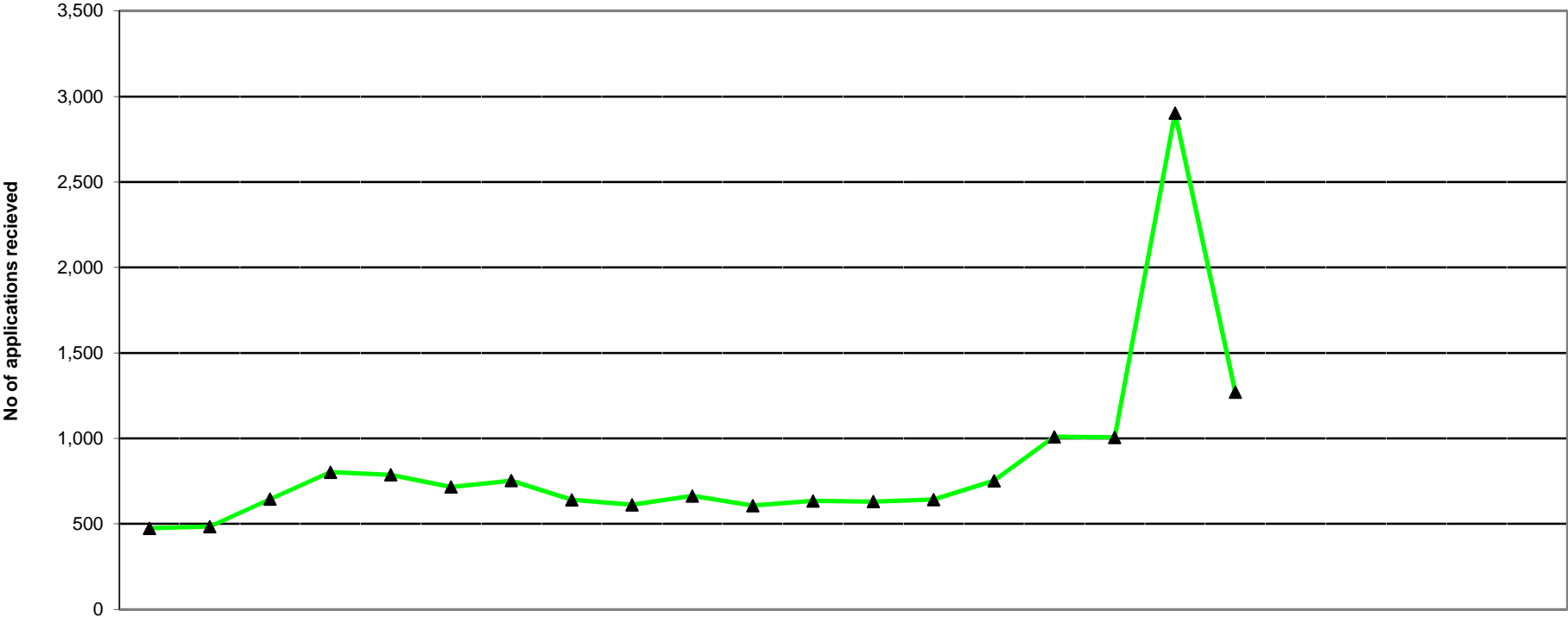
*Social worker section of register open 1st Aug 2012 (covers England only)
 enc 04a - Chief Executive's report - FTP removed



	2011			2012									2013									2007/8	2008/9	09/10	10/11	11/12	12/13		
	Apr	May	Jun	Jul	Aug	Sep	Oct	Nov	Dec	Jan	Feb	Mar	Apr	May	Jun	Jul	Aug	Sep	Oct	Nov	Dec	Jan	Feb	Mar	FYE	FYE	FYE	FYE	FYE
Arts therapists	1	0	2	1	1	1	0	0	2	1	0	1	2	2	4	0	0	1	1	8	6	4	15	10	10				
Bio. scientists	19	13	15	7	4	3	1	3	18	8	15	16	10	14	7	9	9	22	18	231	236	162	202	122	89				
Chirops/ pods	6	3	0	0	1	2	2	0	1	1	0	0	2	0	0	0	6	1	1	39	27	15	17	16	10				
CI scientists	4	3	2	0	1	0	1	2	1	1	4	4	3	3	0	3	3	1	6	30	28	22	26	23	19				
Dietitians	5	5	2	12	8	6	11	3	4	8	4	10	2	5	0	23	14	13	7	94	97	80	88	78	64				
Hearing aid disps	0	1	0	0	0	0	0	1	0	2	1	0	0	0	0	0	2	2	0				4	5	4				
OTs	26	22	19	18	9	8	3	25	21	27	17	22	22	29	10	29	14	29	9	302	283	255	289	217	142				
ODPs	0	0	0	0	0	2	0	0	0	0	1	0	0	0	0	0	0	0	0	5	2	5	3	3	0				
Orthoptists	0	1	0	0	0	0	0	0	0	0	1	0	0	0	0	0	0	0	1	4	3	0	1	2	1				
Paramedics	2	2	2	1	0	3	1	1	0	3	3	2	0	5	0	0	1	9	0	14	22	25	23	20	15				
Physiotherapists	17	115	42	43	42	27	23	32	20	43	28	31	11	113	46	55	68	79	65	567	608	460	500	463	437				
Pract psychs	3	1	26	5	6	7	3	8	8	12	9	3	5	7	12	11	8	11	9			95	127	91	63				
Prosth/orthotists	1	0	1	0	0	0	1	1	1	2	0	0	1	0	0	0	0	0	1	6	3	1	6	7	2				
Radiographers	31	28	11	20	16	17	7	13	9	14	5	45	22	26	24	18	25	33	25	428	336	206	270	216	173				
Social workers*																	0	0	0							0			
SLTs	16	7	10	6	2	1	22	9	5	14	16	8	7	10	16	18	12	6	17	134	105	114	130	116	86				
Total	131	201	132	113	90	77	75	98	90	136	104	142	87	214	119	166	162	207	160	1,862	1,756	1,444	1,701	1,389	1,115				



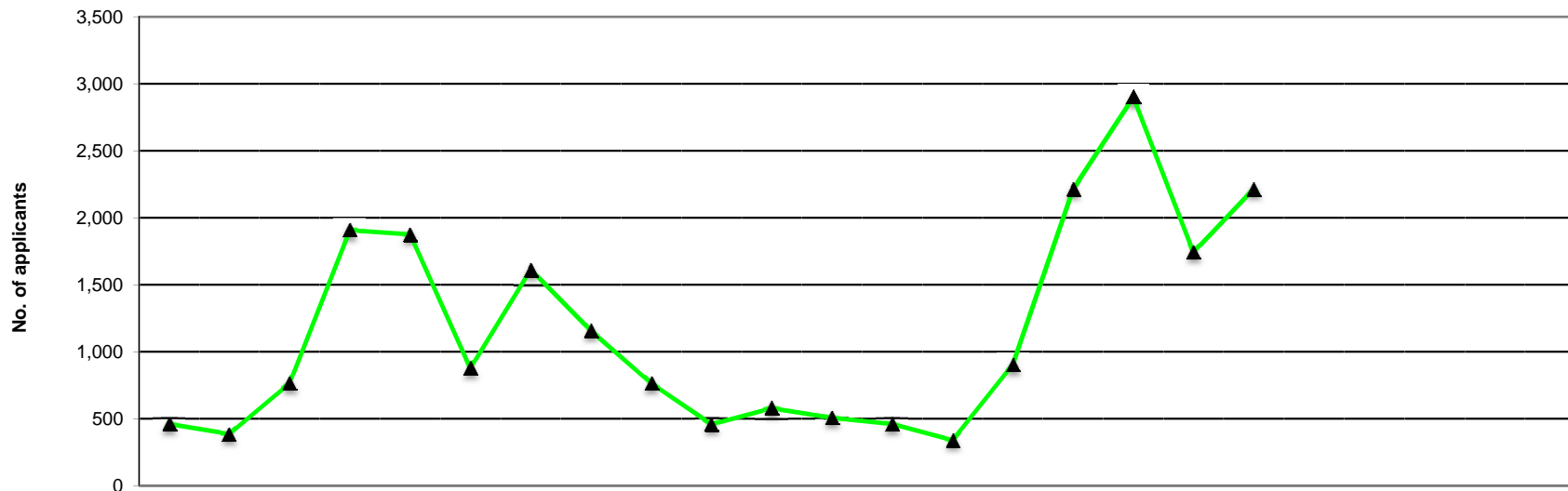
	2011			2012									2013									11/12	12/13			
	Apr	May	Jun	Jul	Aug	Sep	Oct	Nov	Dec	Jan	Feb	Mar	Apr	May	Jun	Jul	Aug	Sep	Oct	Nov	Dec	Jan	Feb	Mar	FYE	YTD
Temp Applications received	36	22	38	40	22	37	62	46	42	52	43	54	40	44	35	44	27	24	47						494	261
Number of temporary registrants	273	284	305	319	310	319	305	324	324	326	318	307	307	312	319	326	341	331	334						3,714	2,270



Current status	2011			2012									2013									11/12	12/13				
	Apr	May	Jun	Jul	Aug	Sep	Oct	Nov	Dec	Jan	Feb	Mar	Apr	May	Jun	Jul	Aug	Sep	Oct	Nov	Dec	Jan	Feb	Mar	FYE	YTD	
Minimum info	474	484	645	802	787	708	737	626	601	652	600	629	625	636	746	1,000	1,000	2,892	1,266							645	1,166
At scrutiny	0	0	0	0	0	8	16	14	10	11	7	5	5	6	5	9	6	10	5							6	7
Pending reg fee	0	0	0	0	0	0	0	1	1	0	0	0	0	0	1	0	0	1	0							0	0
Total	474	484	645	802	787	716	753	641	612	663	607	634	630	642	752	1,009	1,006	2,903	1,271							652	1,173
																										Average	Average

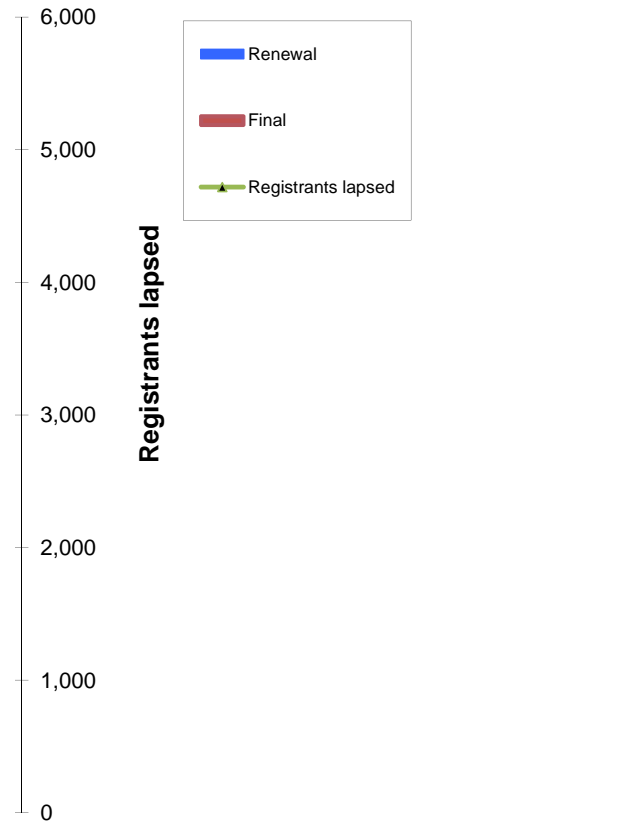
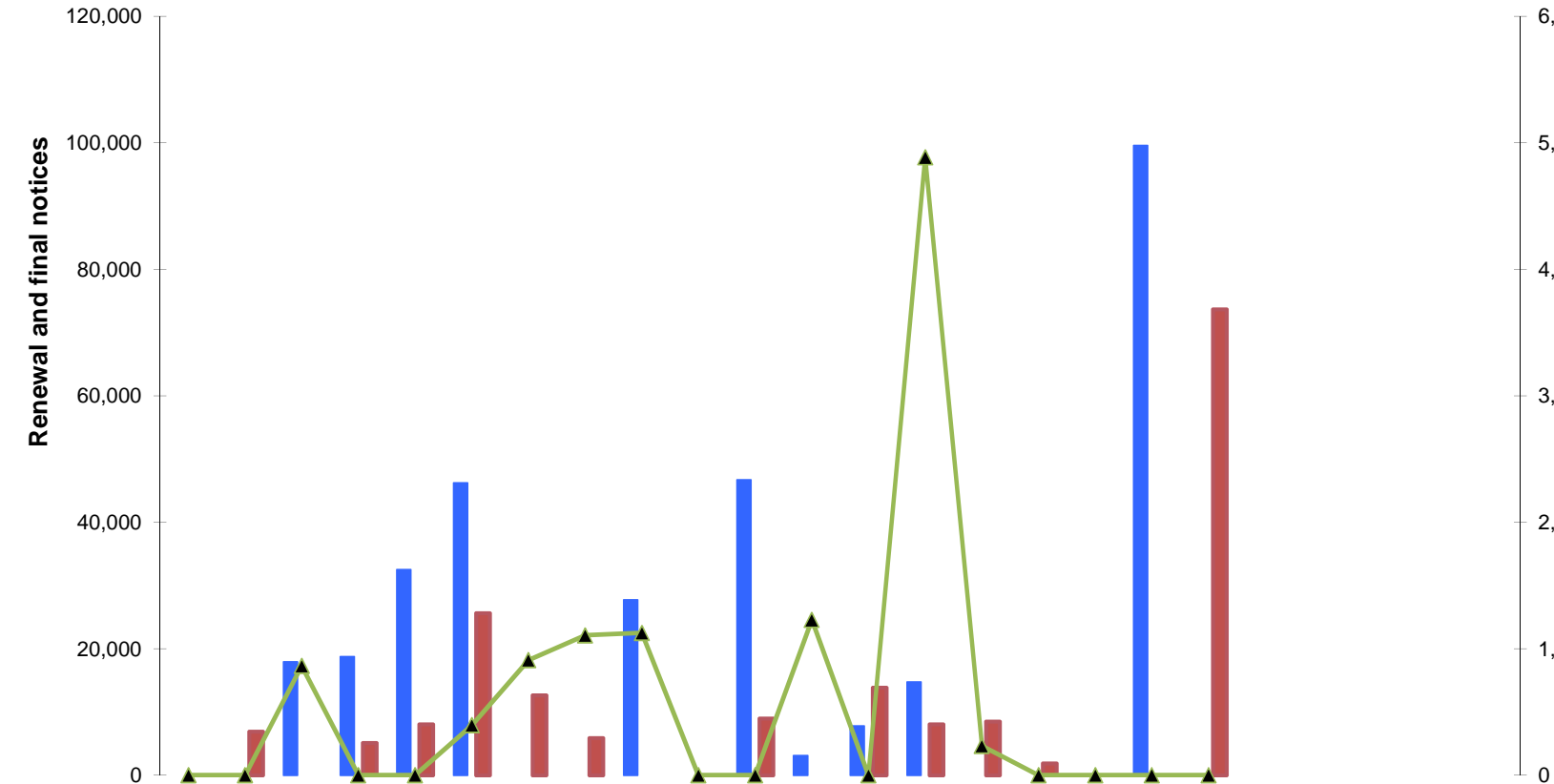
NOTE: Information covers UK applications only
 Represents the current workload within the UK section as at the end of the month

Health and Care Professions Council New UK Applications Received April 2011 - March 2013



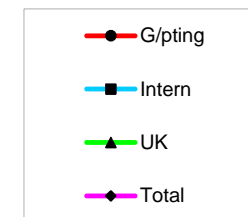
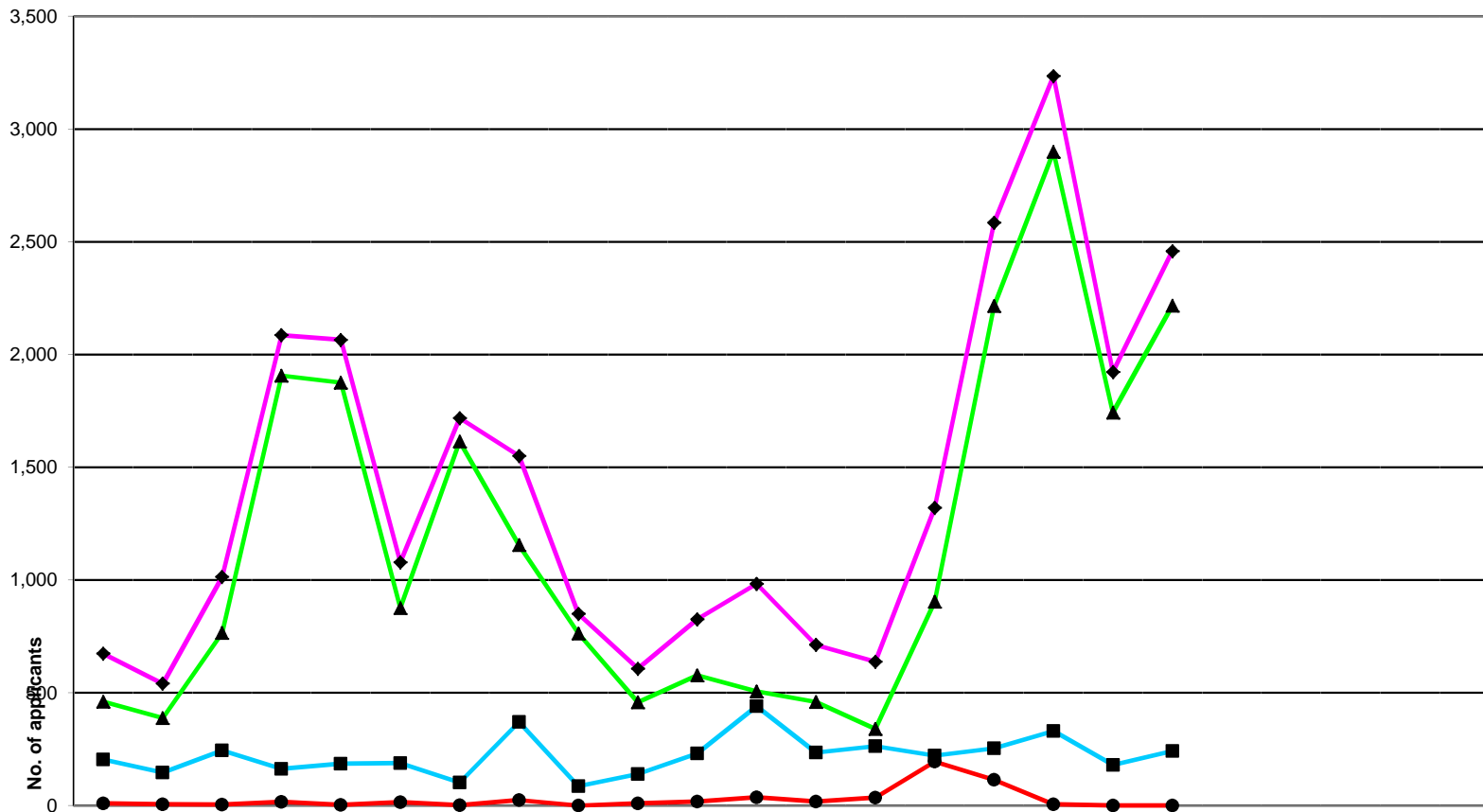
	2011			2012									2013									2008/9	09/10	10/11	11/12	12/13			
	Apr	May	Jun	Jul	Aug	Sep	Oct	Nov	Dec	Jan	Feb	Mar	Apr	May	Jun	Jul	Aug	Sep	Oct	Nov	Dec	Jan	Feb	Mar	FYE	FYE	FYE	FYE	YTD
Arts therapists	18	10	9	22	50	23	40	34	12	13	17	9	10	11	8	23	68	29	35						235	234	257	257	184
Bio. scientists	43	47	61	89	114	57	92	78	61	68	53	41	33	26	31	92	161	60	80						836	831	894	804	483
Chirops/pods	7	6	22	103	111	38	36	23	4	4	6	2	4	2	72	111	75	40	33						282	429	427	362	337
CI Scientists	39	26	22	24	31	4	18	27	14	21	27	26	34	18	13	17	24	5	5						469	218	240	279	116
Dietitians	17	10	47	120	81	29	42	17	6	6	8	19	29	13	40	147	105	24	26						452	444	453	402	384
Hearing aid disp	7	5	6	25	20	8	22	20	7	6	11	9	10	8	12	50	47	19	25								1,787	146	171
OTs	59	35	80	240	361	115	226	163	58	70	92	79	57	60	96	284	423	162	212						1,873	1,763	1,720	1,578	1,294
ODPs	17	29	23	37	130	173	148	48	31	9	11	30	54	14	15	24	183	193	115						636	508	622	686	598
Orthoptists	0	0	0	10	17	4	6	1	2	0	2	0	0	0	0	15	22	5	8						106	46	53	42	50
Paramedics	83	91	103	93	199	115	293	179	81	75	131	76	58	42	61	160	261	296	238						1,402	1,158	1,163	1,519	1,116
Physiotherapists	53	41	132	555	311	121	182	143	57	77	79	75	43	39	212	591	370	133	175						2,531	2,221	2,026	1,826	1,563
Pract psychs	81	54	77	59	76	59	295	250	89	73	72	73	73	46	70	58	70	118	325							2,138	2,043	1,258	760
Prosth/orthotists	1	2	4	4	7	0	5	7	1	1	0	3	2	3	15	10	8	3	4						51	37	39	35	45
Radiographers	16	13	156	406	228	72	109	59	20	11	27	23	28	38	219	483	237	96	102						1,377	1,251	1,221	1,140	1,203
Social workers*																	654	484	735										1,873
SLTs	20	19	24	120	140	58	101	107	321	25	42	42	25	20	40	151	192	76	99						834	759	739	1,019	603
Total	461	388	766	1,907	1,876	876	1,615	1,156	764	459	578	507	460	340	904	2,216	2,900	1,743	2,217						11,084	12,037	13,684	11,353	10,780

*Social worker section of register opened 1st Aug 2012 (covers England only)
enc 04a - Chief Executive's report - FTP removed



Notices	2011			2012									2013											
	Apr	May	Jun	Jul	Aug	Sep	Oct	Nov	Dec	Jan	Feb	Mar	Apr	May	Jun	Jul	Aug	Sep	Oct	Nov	Dec	Jan	Feb	Mar
Renewal	0	0	17,942	18,769	32,520	46,206	0	0	27,712	0	46,689	3,127	7,782	14,736	0	0	0	99,563	0					
Final	0	6,886	0	5,099	8,051	25,654	12,642	5,886	0	0	8,996	0	13,872	8,076	8,477	1,889	0	0	73,684					
Total	0	6,886	17,942	23,868	40,571	71,860	12,642	5,886	27,712	0	55,685	3,127	21,654	22,812	8,477	1,889	0	99,563	73,684					
Renewal on paper	4,662	2,982	2,669	2,291	4,634	9,060	10,447	3,335	987	5,434	3,095	10,545	4,863	2,246	2,341	1,731	0	4	2,824					
Renewal online	1,986	2,661	7,226	6,841	16,493	17,116	8,024	2,922	6,498	7,681	21,371	9,838	10,656	2,144	4,887	2,065	0	26,756	31,744					
Registrants lapsed	0	0	865	0	0	395	910	1,106	1,126	0	0	1,230	0	4,887	232	0	0	0	0					

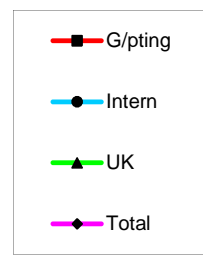
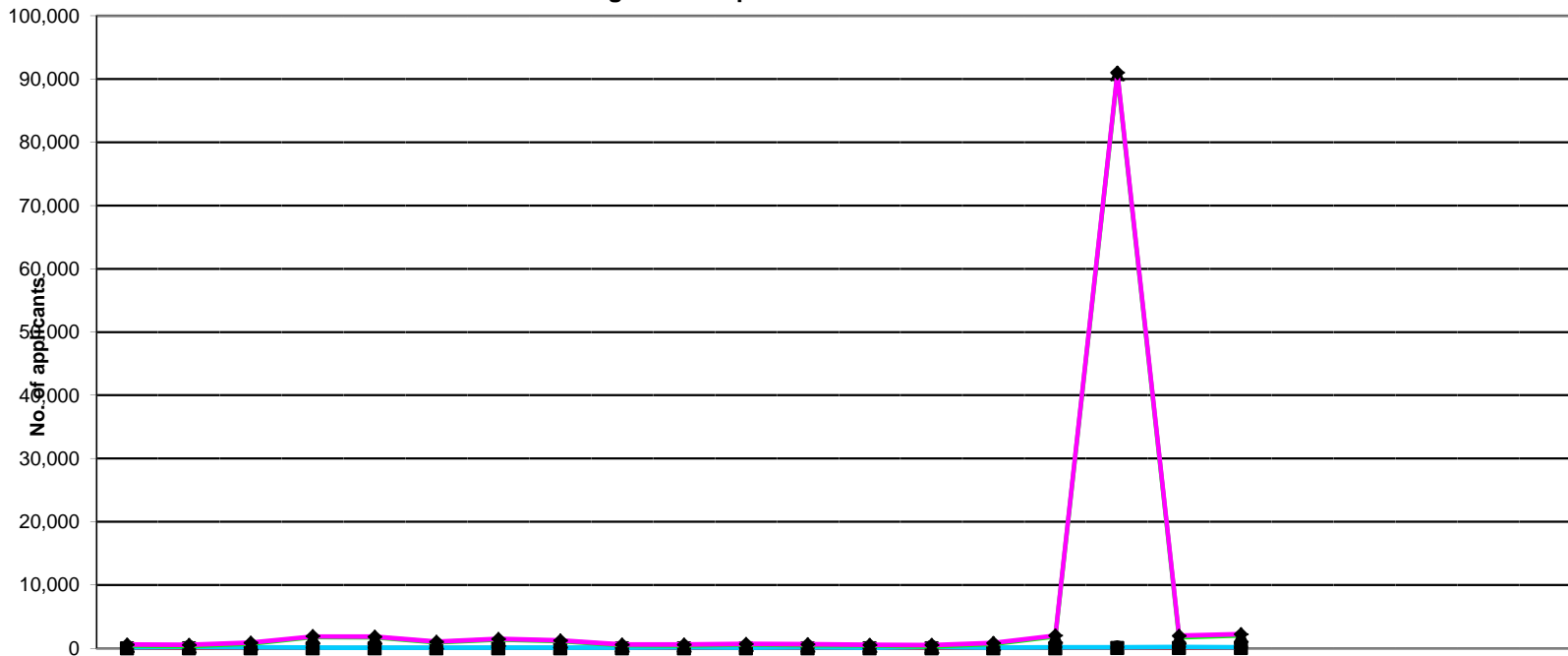
2005/6 FYE	2006/7 FYE	2007/8 FYE	2008/9 FYE	09/10 FYE	10/11 FYE	11/12 FYE	12/13 YTD
142,363	27,711	153,982	29,138	176,570	48,852	192,965	122,081
36,261	25,909	50,531	9,546	28,683	21,560	73,214	105,998
178,624	53,620	204,513	38,684	205,253	70,412	266,179	228,079
					0	60,141	14,009
					0	108,657	78,252
9,448	5,388	8,885	5,550	6,259	3,711	5,632	5,119



Apps Received	2011			2012									2013											
	Apr	May	Jun	Jul	Aug	Sep	Oct	Nov	Dec	Jan	Feb	Mar	Apr	May	Jun	Jul	Aug	Sep	Oct	Nov	Dec	Jan	Feb	Mar
G/pting	9	6	4	16	3	15	2	24	0	9	18	36	18	35	195	115	5	0	0					
Intern	204	147	245	163	186	188	102	371	86	140	231	441	235	264	222	254	331	180	242					
UK	461	388	766	1,907	1,876	876	1,615	1,156	764	459	578	507	460	340	904	2,216	2,900	1,743	2,217					
Total	674	541	1,015	2,086	2,065	1,079	1,719	1,551	850	608	827	984	713	639	1,321	2,585	3,236	1,923	2,459					

2005/6	2006/7	2007/8	2008/9	09/10	10/11	11/12	12/13
FYE	FYE	FYE	FYE	FYE	FYE	FYE	YTD
2,479	20	0	106	93	170	142	368
4,626	3,504	2,300	2,290	2,324	2,597	2,504	1,728
9,497	8,319	8,971	11,084	12,037	13,684	11,353	10,780
16,602	11,843	11,271	13,480	14,454	16,451	13,999	12,876

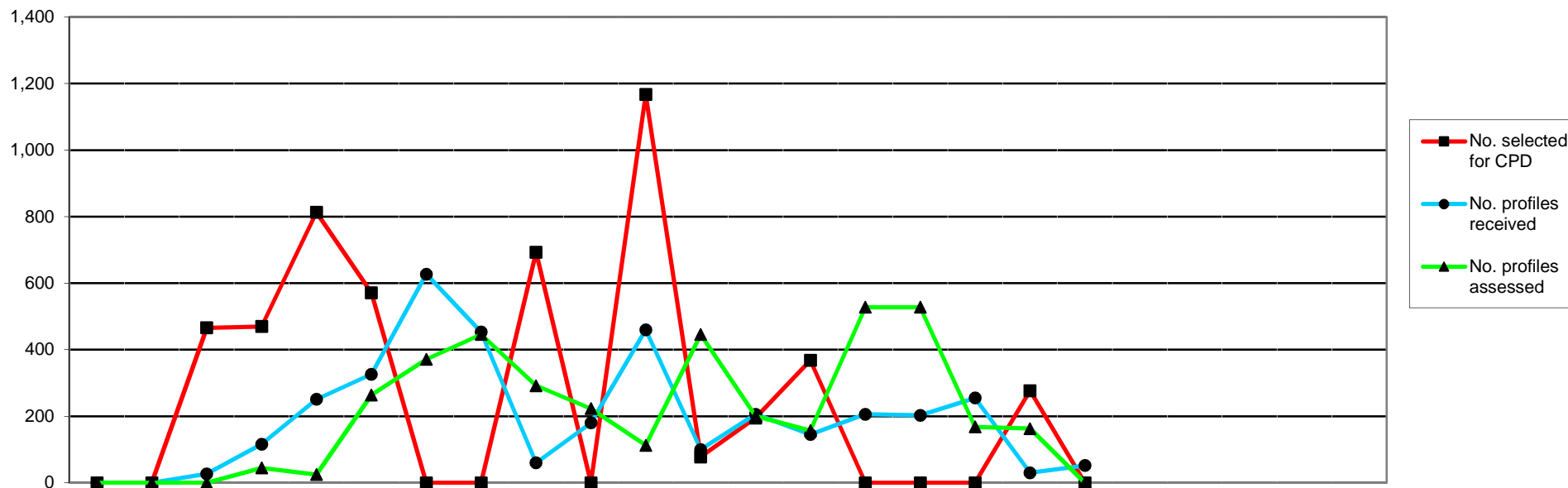
NB The data relates to application forms received, not total fees received.



	2011			2012									2013											
	Apr	May	Jun	Jul	Aug	Sep	Oct	Nov	Dec	Jan	Feb	Mar	Apr	May	Jun	Jul	Aug*	Sep	Oct	Nov	Dec	Jan	Feb	Mar
G/pting	3	3	13	3	7	1	2	4	6	8	12	3	8	9	13	11	46	44	51					
Intern	131	201	132	113	90	77	75	98	90	136	104	142	87	214	119	166	162	207	160					
UK	461	357	766	1,794	1,743	950	1,409	1,156	490	466	588	495	439	294	711	1,875	90,799	1,727	2,034					
Total	595	561	911	1,910	1,840	1,028	1,486	1,258	586	610	704	640	534	517	843	2,052	91,007	1,978	2,245					

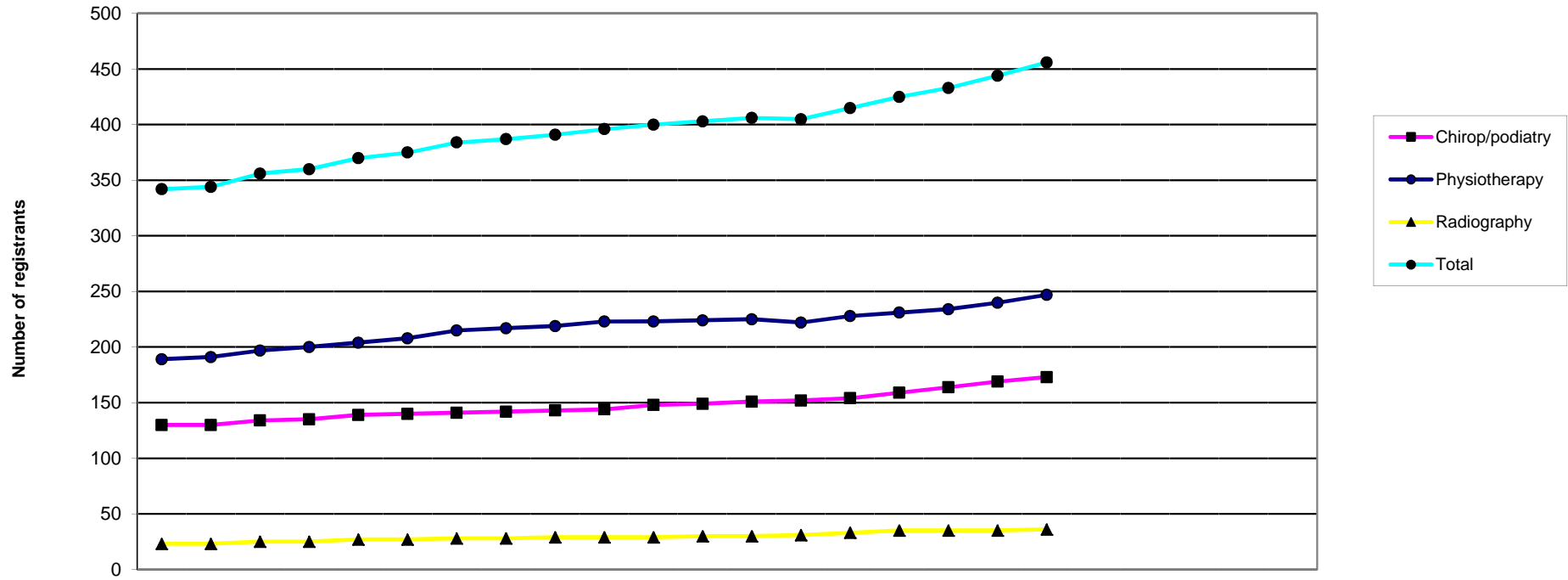
2005/6	2006/7	2007/8	2008/9	09/10	10/11	11/12	12/13
FYE	FYE	FYE	FYE	FYE	FYE	FYE	YTD
2,295	283	9	0	63	96	65	182
3,107	3,172	1,862	1,756	1,444	1,701	1,389	1,115
9,474	8,870	8,355	10,774	11,069	11,122	10,675	97,879
14,876	12,325	10,226	12,530	12,576	12,919	12,129	99,176

* The inflated figure for UK for August includes the new SW's added on the 1st August 2012



	2011		2012										2013						11/12	12/13						
	Apr	May	Jun	Jul	Aug	Sep	Oct	Nov	Dec	Jan	Feb	Mar	Apr	May	Jun	Jul	Aug	Sep	Oct	Nov	Dec	Jan	Feb	Mar	FYE	YTD
No. selected for CPD	0	0	466	470	813	571	0	0	693	0	1,167	78	195	368	0	0	0	277	0						4,258	840
No. profiles received	0	0	27	116	251	326	627	453	60	180	460	100	206	145	206	203	255	30	52						2,600	1,097
No. profiles assessed	0	0	0	45	25	264	371	446	292	223	113	446	201	157	528	528	168	163	0						2,225	1,745

Health and Care Professions Council Number of registrants with supplementary prescribing rights April 2011 - March 2013



	2011			2012									2013												
	Apr	May	Jun	Jul	Aug	Sep	Oct	Nov	Dec	Jan	Feb	Mar	Apr	May	Jun	Jul	Aug	Sep	Oct	Nov	Dec	Jan	Feb	Mar	
Chiropr/podiatry	130	130	134	135	139	140	141	142	143	144	148	149	151	152	154	159	164	169	173						
Physiotherapy	189	191	197	200	204	208	215	217	219	223	223	224	225	222	228	231	234	240	247						
Radiography	23	23	25	25	27	27	28	28	29	29	29	30	30	31	33	35	35	35	36						
Total	342	344	356	360	370	375	384	387	391	396	400	403	406	405	415	425	433	444	456						

2006/7	2007/8	2008/9	09/10	10/11	11/12	12/13
FYE	FYE	FYE	FYE	FYE	FYE	YTD
15	40	78	112	129	149	173
28	74	109	148	182	224	247
0	7	19	20	23	30	36
43	121	206	280	334	403	456