

Council, 6 February 2014

Education Report

Executive summary and recommendations

Introduction

The report sets out the main activities of the Education Department since the last meeting of Council. It includes statistical information and highlights key work undertaken.

Decision

The Council is requested to discuss the report.

Background information

None

Resource implications

The resources for the Department are set out in the annual workplan and budget 2013-14.

Financial implications

None

Appendices

Education Report

Education Department
Management Information Pack

Brendon Edmonds, Director of Education
January 2014

Table of contents

Section 1: Management commentary

Section 2: Management statistics

- | | |
|--|----|
| 1. Number of approved programmes, by profession, April 2012 - March 2014 | 2a |
| 2. Overview of approval visits, April 2012 – March 2014 | 2b |
| 3. Reasons for approval visits, April 2012 – March 2014 | 2c |
| 4. Overview of annual monitoring submissions, April 2012 - March 2014 | 2d |
| 5. Overview of major change submissions, April 2012 - March 2014 | 2e |
| 6. Concerns about approved programmes, April 2012 - March 2014 | 2f |

Approval process

The Department has spent the last few months organising and attending approval visits for the 2013–14 academic year. Since the last Council meeting on 4 December 2013, 8 visits covering 16 programmes have taken place. In total, 75 visits across 168 programmes have been arranged from September 2013 - August 2014. The majority of these visits are to social worker programmes (71%) and AMHP programmes (17%).

The schedule of visits is now closed until September 2014, as we require six months' notice to arrange a visit.

Annual monitoring process

The Department has spent the past few months finalising and initiating the annual monitoring process for the 2013–14 academic year. All education providers have now been contacted to confirm their individual requirements and we have begun to receive the first submissions already.

The first two assessment days have been confirmed later this month, with a further three assessment days scheduled in March/April, two in May/June and one in August 2014. As a consequence, it is envisaged that the majority of visitor reports will be considered by Education and Training Panels in May, June, July and August 2014.

Major change process

Since our last report to Council, the Department has received 18 new major change notifications, covering 24 programmes. The Education and Training Panel considered 90 programmes which had engaged with the major change process on 3 December 2013 and decided that each of these programmes continued to meet our standards of education and training and an approval visit was not required.

Concerns process

The Department has received one concern which fell within our remit in the 2013–14 academic year. However, this concern was referred to the Fitness to Practice Department for further investigation. There are currently no outstanding concerns.

See section 2 for more information on the above operational processes.

Independent and supplementary prescribing programmes

Following recent legislative changes to allow appropriately trained chiropodists / podiatrists and physiotherapists to independently prescribe, 65 independent prescribing programmes were considered via a documentary approval process and approved by the Education and Training Panel in December 2013. This included 53 programmes which changed from supplementary prescribing to independent prescribing, 12 programmes with a supplementary prescribing exit point and 10 conversion programmes. 34 programmes will also be considered by the Education and Training Panel this month.

We are also scheduling full approval visits to programmes where an education provider is not currently approved to deliver supplementary prescribing. In 2013-14, one visit to a new independent prescribing programme has been arranged.

Partners

The Department continues to engage in visitor recruitment activities to backfill vacancies in existing professions as well as preparing for new areas of work (such as lay visitors). Interviews took place in December 2013 and art therapist, biomedical scientist, radiographer and hearing aid dispenser visitors were successfully recruited. New visitor training for these visitors takes place this week.

We were unable to recruit drama therapist, prosthesis / orthotist or chiropodist / podiatrist visitors with the prescription only medicine

(POM) qualification, so further recruitment will take place from October 2014. Recruitment activities for lay visitors began last month, with interviews expected to take place in June and new visitor training in July 2014.

Seminars

The Department has spent the last couple of months co-ordinating participant feedback from the eight education seminars delivered between September 2013 – February 2014. A paper analysing this feedback will be taken to the Education and Training Committee in March 2014.

We have continued to run additional social worker specific seminars this year to recognise the different level of awareness with our processes and the increase in the number of professions that we now regulate. We have also run seminars focused on service user and carer involvement in education and training following the introduction of our new standard of education and training relating to service user and carer involvement.

Publications

The Department has recently undertaken an analysis of our operational activities in the 2012 – 2013 academic year for inclusion in the Education annual report 2013. The report is due to be considered by the Education and Training Committee in March 2014 with publication anticipated in May 2014. The report will include a review of our first year of approval visits to programmes for social workers in England.

Liaison with stakeholders

The fifteenth issue of the Education update was distributed to education providers, visitors and other education stakeholders in week commencing 20 January 2014 and is available on the HCPC website at: www.hcpc-uk.org/education/update/

The following articles were included:

- Approving independent prescribing programmes
- Annual monitoring for 2013–14
- Review of approval visits to social work programmes 2012–13
- Approval visits for 2014–15
- The involvement of lay visitors in approval processes
- Paramedic Evidence Based Education Project
- Implementation of revised standards of proficiency
- Education seminars
- Outcome of the consultation on registration fees
- Professional indemnity and your registration
- Council and Education and Training Committee restructure
- Biomedical scientists and radiographers registration renewal
- Education and Training Committee and Panel dates 2014

Members of the Department met with the following groups from December 2013 – February 2014:

- CORU – the Irish health regulator
- The Quality Assurance Agency for Higher Education
- NHS Education for Scotland
- The British Association of Social Workers
- The Higher Education Academy

Education system build major project

The project build phase commenced at the end of September 2013 following the sign off of the Project Initiation Document (PID) by the Executive Management Team. The PID defined the detail of the project delivery, the necessary quality of the products, how changes will be communicated and funded and the required activities needed to complete the project.

The external suppliers began to build the system in early November and constituent components of the system will be built in a series of seven cycles to allow the project team and members of the

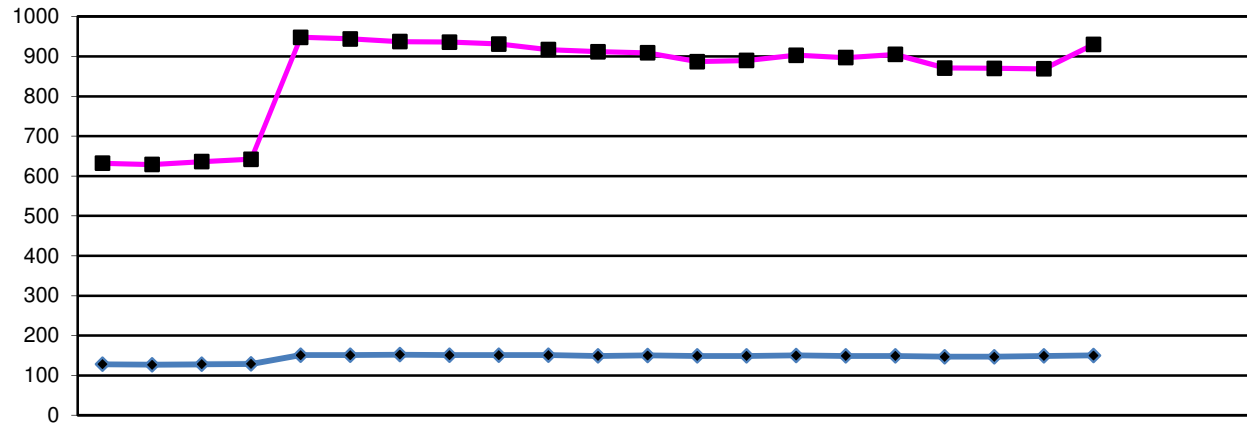
Department to test the new system and provide feedback, with changes being made where necessary.

The timelines for the project have been amended through the project initiation phase. The project build phase now completes in April 2015. This is in part due to the complexity and scale of the build. It is also to ensure that the project team has sufficient time to test and feedback between cycles, with an appropriate amount of contingency included in the plan. The key phases of the project are currently:

1. Project initiation January – September 2013
2. Build and business change September – January 2015
3. Deployment January 2015 – April 2015
4. Close of project and business as usual – April 2015

Employees

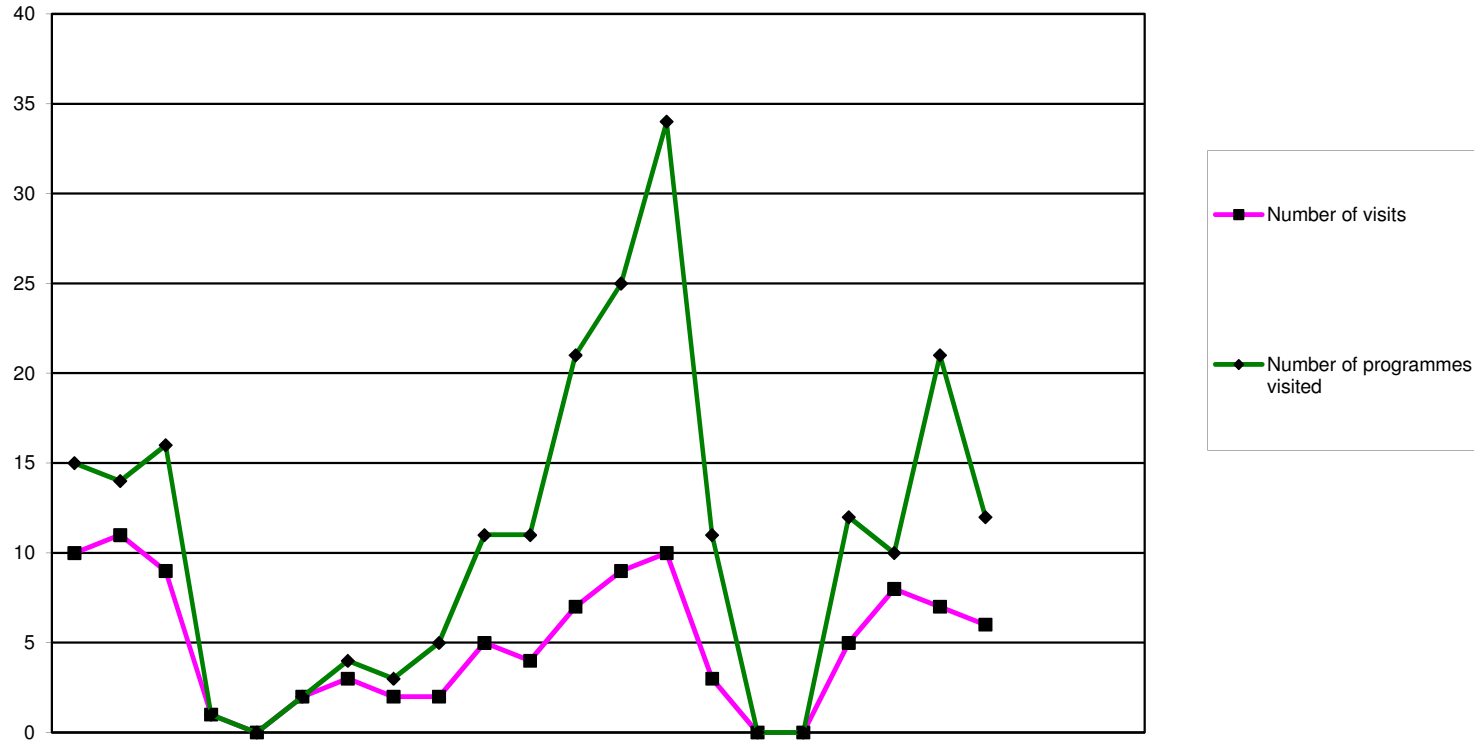
There have been no employee changes in the Department since the last Council meeting on 3 December 2013 and no further recruitment is planned for 2013-14. The total number of employees remains at 18. The Department is making arrangements for Abigail Gorrings return from maternity leave at the beginning of March 2014.



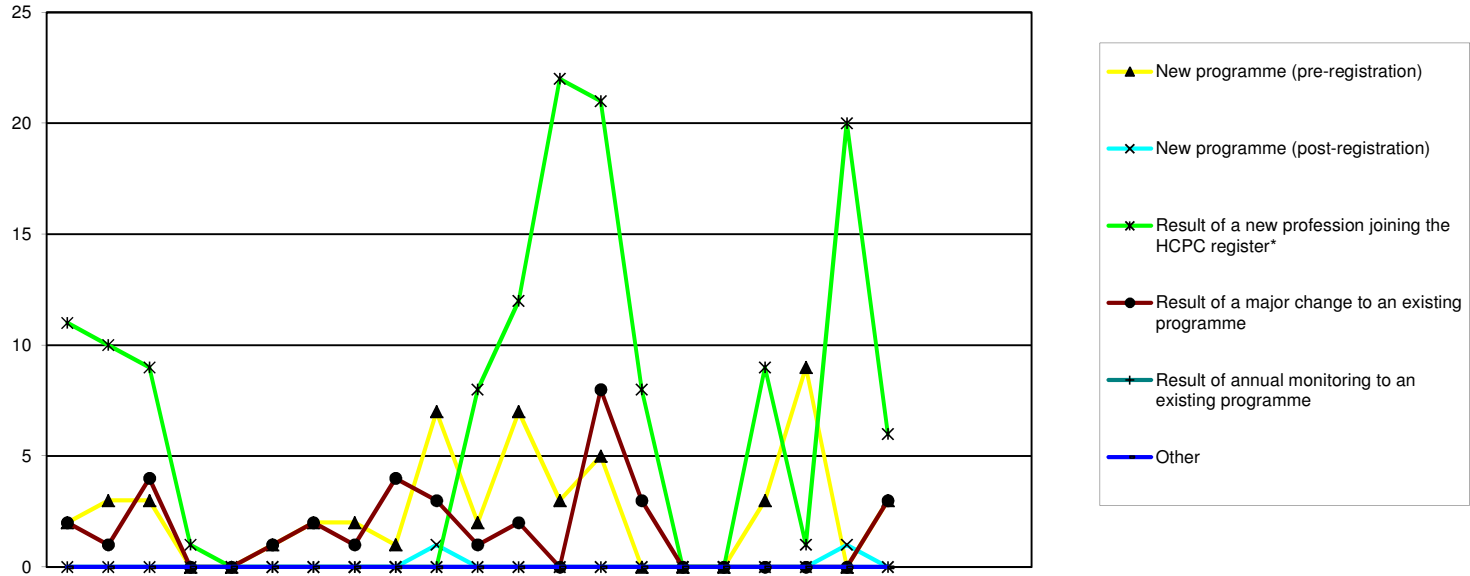
■ Total approved programmes
◆ Total approved education providers

	2012			2013									2014											
	Apr	May	Jun	Jul	Aug	Sep	Oct	Nov	Dec	Jan	Feb	Mar	Apr	May	Jun	Jul	Aug	Sep	Oct	Nov	Dec	Jan	Feb	Mar
Arts therapists	20	20	20	29	29	29	29	29	29	29	29	29	29	29	29	29	29	29	29	29	29	29	29	29
Biomedical scientists	48	51	52	51	51	55	55	54	54	52	60	60	58	56	57	57	57	55	55	55	55	55	55	55
Chiropodists/ Podiatrists	20	20	20	20	20	20	19	19	19	18	18	17	17	17	17	17	17	17	17	17	16	16	16	16
Clinical scientists	1	1	1	1	1	3	3	3	3	3	3	3	3	3	3	3	3	3	3	3	3	3	3	3
Dietitians	33	33	33	33	33	33	32	32	32	32	32	32	32	32	32	32	32	32	32	32	32	32	32	32
Hearing aid dispensers	13	13	14	14	17	17	16	16	16	15	15	15	15	15	17	17	18	18	18	18	18	18	18	18
Occupational therapists	74	74	74	74	74	74	73	73	74	73	73	73	73	77	78	75	75	75	75	73	73	73	73	73
Operating Department Practitioners	32	31	33	33	33	33	33	33	33	33	35	35	35	37	37	35	35	34	34	34	34	34	34	34
Orthoptists	3	3	3	3	3	3	3	3	3	3	3	3	3	3	3	3	3	3	3	3	3	3	3	3
Paramedics	50	48	49	47	48	48	48	48	48	48	48	50	50	49	50	50	50	48	48	49	49	49	49	49
Physiotherapists	65	65	65	65	65	64	63	63	64	64	65	65	65	66	67	68	67	67	67	65	65	65	65	65
Practitioner psychologists	95	94	94	94	94	93	93	93	93	93	91	91	91	93	93	93	92	93	93	91	91	91	91	91
Prosthetists/Orthotists	3	3	3	3	3	3	3	3	3	3	3	3	3	3	3	3	3	3	3	3	3	3	3	3
Radiographers	55	54	54	54	54	54	54	54	53	53	53	53	53	53	53	53	53	53	53	53	53	53	53	53
Social workers in England					271	267	265	264	259	248	237	231	212	209	216	214	221	222	221	225	225			
Speech and language therapists	32	31	31	31	31	31	31	31	31	31	31	31	31	32	32	32	32	32	32	32	32	32	32	32
Local anaesthesia	2	2	4	4	4	4	4	4	4	4	4	4	4	4	4	4	4	4	4	4	4	4	4	4
Prescription only medicine	9	9	9	9	9	9	9	9	9	9	9	9	9	9	9	9	10	10	10	10	10	10	10	10
Supplementary prescribing	77	77	77	77	77	77	76	76	76	78	76	77	77	76	76	76	77	44	46	46	55	55	55	55
Independent prescribing																			53					
Approved mental health professionals					31	27	27	29	28	27	27	27	27	27	27	27	27	27	27	27	27	27	27	27
Total approved programmes	632	629	636	642	948	944	937	936	931	917	912	909	887	890	903	897	905	871	870	869	930	930	930	930
Total approved education providers	128	127	128	129	151	151	152	151	151	151	149	150	149	149	150	149	149	147	147	149	150	150	150	150

2011/12	2012/13	2013/14
FYE	FYE	YTD
21	29	29
49	60	55
20	18	17
1	3	3
33	32	32
18	15	18
74	73	73
34	35	34
3	3	3
50	50	49
67	65	65
95	91	91
3	3	3
56	53	53
	231	225
32	31	32
2	4	4
9	9	10
77	77	46
	27	27
644	909	869
128	150	149

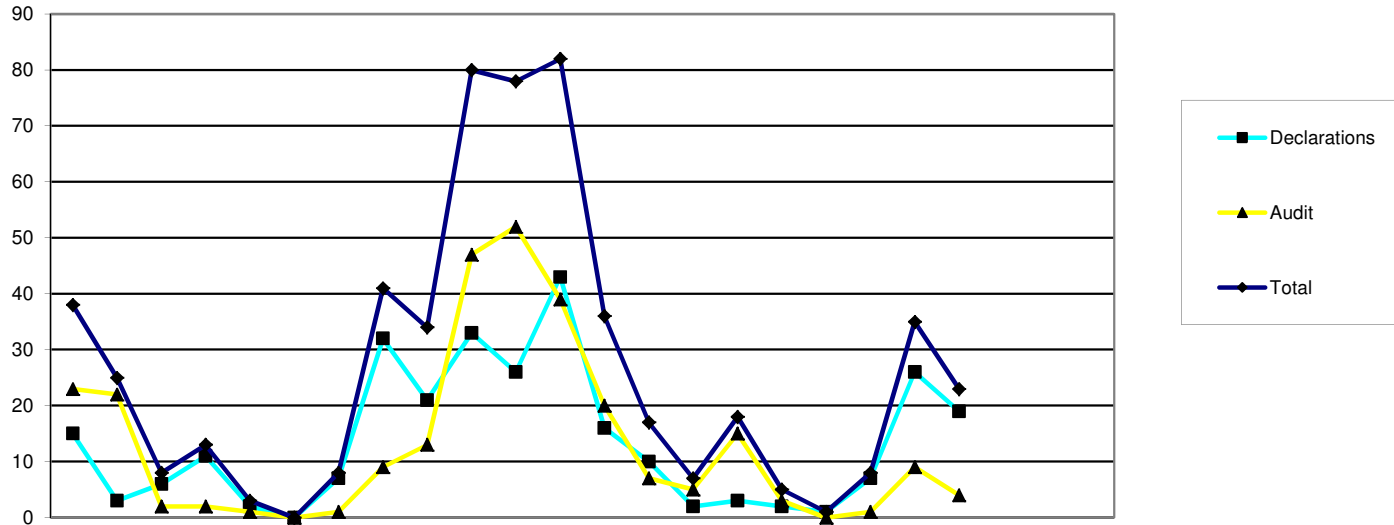


	2012			2013									2014					2009/10	2010/11	2011/12	2012/13	2013/14									
	Apr	May	Jun	Jul	Aug	Sep	Oct	Nov	Dec	Jan	Feb	Mar	Apr	May	Jun	Jul	Aug	Sep	Oct	Nov	Dec	Jan	Feb	Mar	FYE	FYE	FYE	FYE	YTD		
Overview of approval visits																															
Number of visits	10	11	9	1	0	2	3	2	2	5	4	7	9	10	3	0	0	5	8	7	6						38	58	59	56	48
Number of programmes visited	15	14	16	1	0	2	4	3	5	11	11	21	25	34	11	0	0	12	10	21	12						80	101	112	103	125



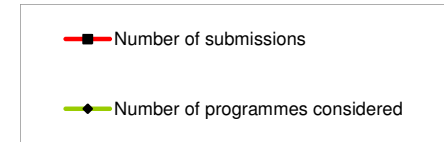
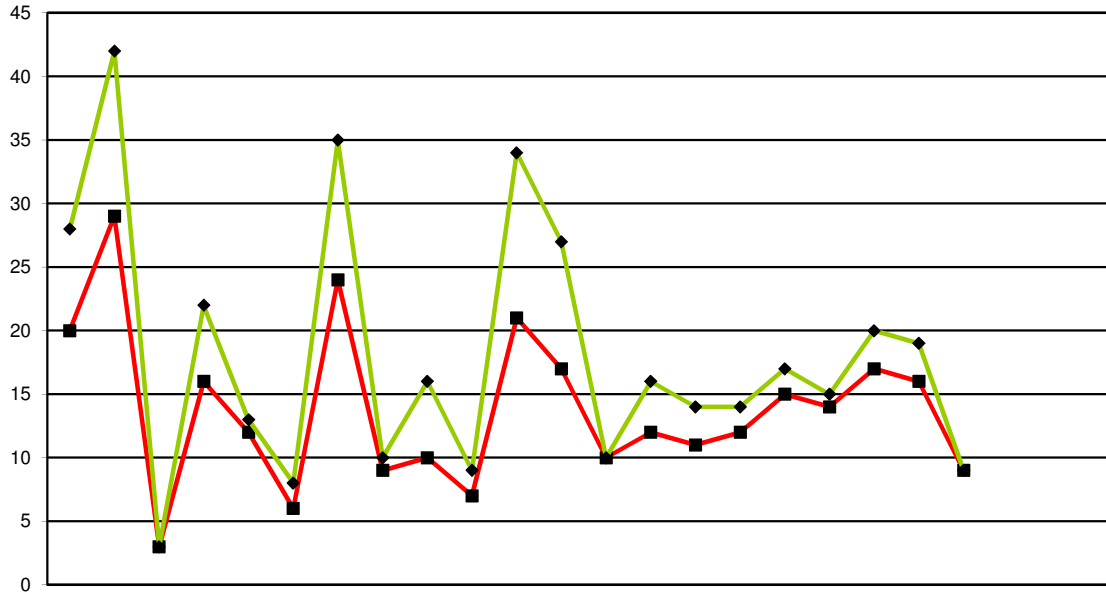
Reason for programme visited	2012			2013									2014			2009/10	2010/11	2011/12	2012/13	2013/14									
	Apr	May	Jun	Jul	Aug	Sep	Oct	Nov	Dec	Jan	Feb	Mar	Apr	May	Jun	Jul	Aug	Sep	Oct	Nov	Dec	Jan	Feb	Mar	FYE	FYE	FYE	FYE	YTD
New programme (pre-registration)	2	3	3	0	0	1	2	2	1	7	2	7	3	5	0	0	0	3	9	0	3				25	29	17	30	23
New programme (post-registration)	0	0	0	0	0	0	0	0	0	1	0	0	0	0	0	0	0	0	0	1	0				1	0	2	1	1
Result of a new profession joining the HCPC register*	11	10	9	1	0	0	0	0	0	0	8	12	22	21	8	0	0	9	1	20	6				7	31	32	51	87
Result of a major change to an existing programme	2	1	4	0	0	1	2	1	4	3	1	2	0	8	3	0	0	0	0	0	3				42	37	57	21	14
Result of annual monitoring to an existing programme	0	0	0	0	0	0	0	0	0	0	0	0	0	0	0	0	0	0	0	0	0				3	4	2	0	0
Other	0	0	0	0	0	0	0	0	0	0	0	0	0	0	0	0	0	0	0	0	0				2	0	0	0	0
Total	15	14	16	1	0	2	4	3	5	11	11	21	25	34	11	0	0	12	10	21	12				80	101	110	103	125

* - Practitioner psychologists July 2009 - July 2012
 - Hearing Aid Dispensers April 2010 - July 2012
 - Social workers in England August 2012 - July 2015

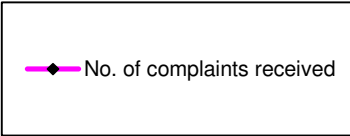
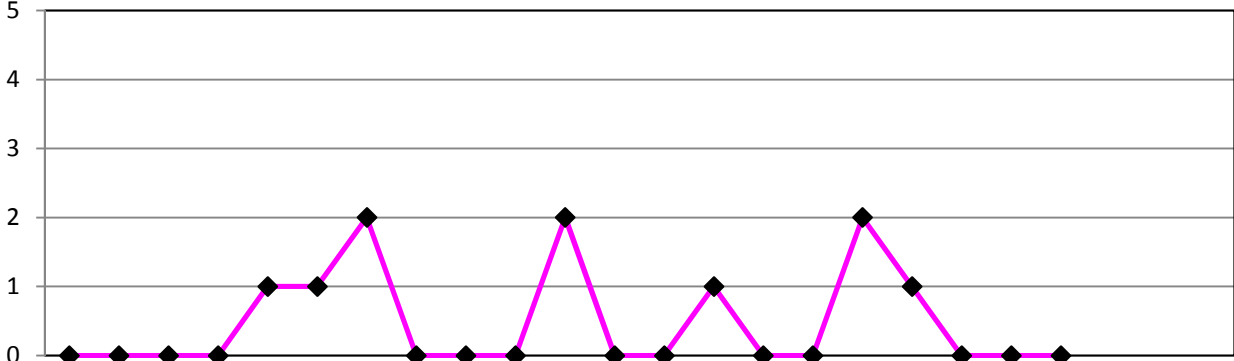


Annual monitoring submissions	2012			2013										2014										
	Apr	May	Jun	Jul	Aug	Sep	Oct	Nov	Dec	Jan	Feb	Mar	Apr	May	Jun	Jul	Aug	Sep	Oct	Nov	Dec	Jan	Feb	Mar
Declarations	15	3	6	11	2	0	7	32	21	33	26	43	16	10	2	3	2	1	7	26	19			
Audit	23	22	2	2	1	0	1	9	13	47	52	39	20	7	5	15	3	0	1	9	4			
Total	38	25	8	13	3	0	8	41	34	80	78	82	36	17	7	18	5	1	8	35	23			

2009/10	2010/11	2011/12	2012/13	2013/14
FYE	FYE	FYE	FYE	YTD
105	232	232	199	86
123	257	147	211	64
228	489	379	410	150



	2012			2013									2014			2009/10	2010/11	2011/12	2012/13	2013/14									
	Apr	May	Jun	Jul	Aug	Sep	Oct	Nov	Dec	Jan	Feb	Mar	Apr	May	Jun	Jul	Aug	Sep	Oct	Nov	Dec	Jan	Feb	Mar	FYE	FYE	FYE	FYE	YTD
Major change submissions																													
Number of submissions	20	29	3	16	12	6	24	9	10	7	21	17	10	12	11	12	15	14	17	16	9								
Number of programmes considered	28	42	3	22	13	8	35	10	16	9	34	27	10	16	14	14	17	15	20	19	9								
																									115	104	146	174	116
																									179	169	217	247	134



		2012			2013						2014														
		Apr	May	Jun	Jul	Aug	Sep	Oct	Nov	Dec	Jan	Feb	Mar	Apr	May	Jun	Jul	Aug	Sep	Oct	Nov	Dec	Jan	Feb	Mar
No. of complaints received		0	0	0	0	1	1	2	0	0	0	2	0	0	1	0	0	2	1	0	0	0	0	0	
Complaints outcomes	Directed visit	0	0	0	0	0	0	0	0	0	0	0	0	0	0	0	0	0	0	0	0	0	0	0	
	Approval process	0	0	0	0	0	0	0	0	0	0	0	0	0	0	0	0	2	0	0	0	0	0	0	
	Major change process	0	0	0	0	0	0	0	0	0	0	0	0	0	0	0	0	0	0	0	0	0	0	0	
	Annual monitoring process	0	0	0	0	0	0	0	0	0	0	0	0	0	0	0	0	0	0	0	0	0	0	0	
	Withdrawn	0	0	0	0	0	0	0	0	0	0	0	0	0	0	0	0	0	0	0	0	0	0	0	
	Unsubstantiated	0	0	0	0	1	1	2	0	0	0	0	2	0	0	1	0	0	0	1	0	0	0	0	
	Pending	0	0	0	0	0	0	0	0	0	0	0	0	0	0	0	0	0	0	0	0	0	0	0	

	2009/10 FYE	2010/11 FYE	2011/12 FYE	2012/13 FYE	2013/14 YTD
No. of complaints received	6	5	5	6	4
No. of approved progs	480	623	644	909	887
% progs affected by complaints	1.3%	0.8%	0.8%	0.7%	0.5%