

Council, 29 June 2015

Education Report

Executive summary and recommendations

Introduction

The report sets out the main activities of the Education Department in April, May and June 2015. It includes statistical information and highlights key work undertaken.

Decision

The Council is requested to discuss the report.

Background information

None.

Resource implications

The resources for the Department are set out in the annual work plans and budgets.

Financial implications

The costs associated with all activities are set out in the budgets.

Appendices

Education management information pack



Education Department

Management Information Pack

Abigail Gorringe
Director of Education

June 2015

Table of contents

Section 1: Management commentary

Section 2: Management statistics

1. Number of approved programmes, by profession, April 2013 – March 2015
2. Overview of approval visits, April 2013 – March 2015
3. Reasons for approval visits, April 2013 – March 2015
4. Overview of annual monitoring submissions, April 2013 – March 2015
5. Overview of major change submissions, April 2013 – March 2015
6. Overview of concerns about approved programmes, April 2013 – March 2015

1 Management commentary

Approval process

The Department has remained in the peak period of this process over the last few months. In April and May 2015, 15 visits took place. A further 14 visits are planned in June, July and August 2015 which is a higher number than normal and linked to education providers outside of the higher education sector seeking approval and recently proposed changes to existing programmes. In total, 71 visits programmes have been arranged in the 2014-15 academic year (September 2014 - August 2015). The majority of visits are to social worker and AMHP programmes (45%), but there has been a significant and growing proportion (30%) to paramedic both existing and new programmes. The Department has continued to schedule approval visits in the 2015–16 academic year. In total, 17 visits have been formally scheduled. The majority of visits continue to be to social worker (35%) and paramedic (29%) programmes. Seven visits are scheduled for September 2015 which is a higher number than normal and linked to a number of proposed social worker programmes intending to start in February 2016.

Annual monitoring process

The Department has now completed the majority of the annual monitoring process in the 2014–15 academic year. Three assessment days took place in May 2015 and a final assessment day is planned in August 2015, with a small number of audit submissions being considered via postal assessment outside of these days. In total, ten assessment days will be held in the 2014-15 academic year (an increase from 7 in 2013-14). The majority of outcomes have been considered by Education and Training Panels in April, May and June 2015. To date, all programmes have continue to meet the standards. Two visits have been recommended by visitors for consideration at tomorrow's Education and Training Panel.

Major change process

The Department considered 48 new major change notifications, covering 55 programmes in April and May 2015. The Education and Training Panels in May and June 2015 considered 25 programmes which had recently engaged with the major change process and it was decided that all programmes continued to meet our standards of education and training.

Concerns process

The Department received one new concern in April and May 2015 which met our criteria for further investigation. The investigation is on-going and it is anticipated that it will be considered by the Education and Training Committee in September 2015. There are two additional active concerns - one (originally received in August 2014) is on hold pending the outcome of investigations with the education provider and OIA and the other was considered by the Education and Training Committee in June 2015.

See section 2 for more statistical information on the above operational processes.

Podiatrists practising podiatric surgery

Following the publication of the standards for podiatric surgery in May 2015, the Department has begun to initiate the approval process. A revised visitor personal specification was agreed by the Education and Training Committee in May 2015 and a recruitment campaign for new visitors opened in June 2015. One education provider has proactively contacted us about scheduling an approval visit and the executive has provided some initial guidance on our standards and processes. The executive intend to contact the existing education provider in this field to arrange a second approval visit, once the recruitment and selection of visitors has progressed further and there is more certainty that the relevant resources have been secured.

Partners

In May 2015, we appointed 10 new visitors from across five professions. The majority are due to attend new visitor training in July 2015; with an additional session now being scheduled for September 2015. Initial plans have also begun for the next general recruitment campaign in autumn 2015.

Liaison with stakeholders

Members of the Department met with the following stakeholders in May and June 2015:

- Australian Health Practitioner Regulation Agency (AHPRA)
- Department for Health (with Executive Management Team)
- Quality Assurance Agency (QAA) Professional and Regulatory Statutory Bodies steering group
- Academic Registrars' Group (with Policy & Standards)
- Education Inter-regulatory group
- British Psychological Society – Division of Counselling Psychology (Wales)

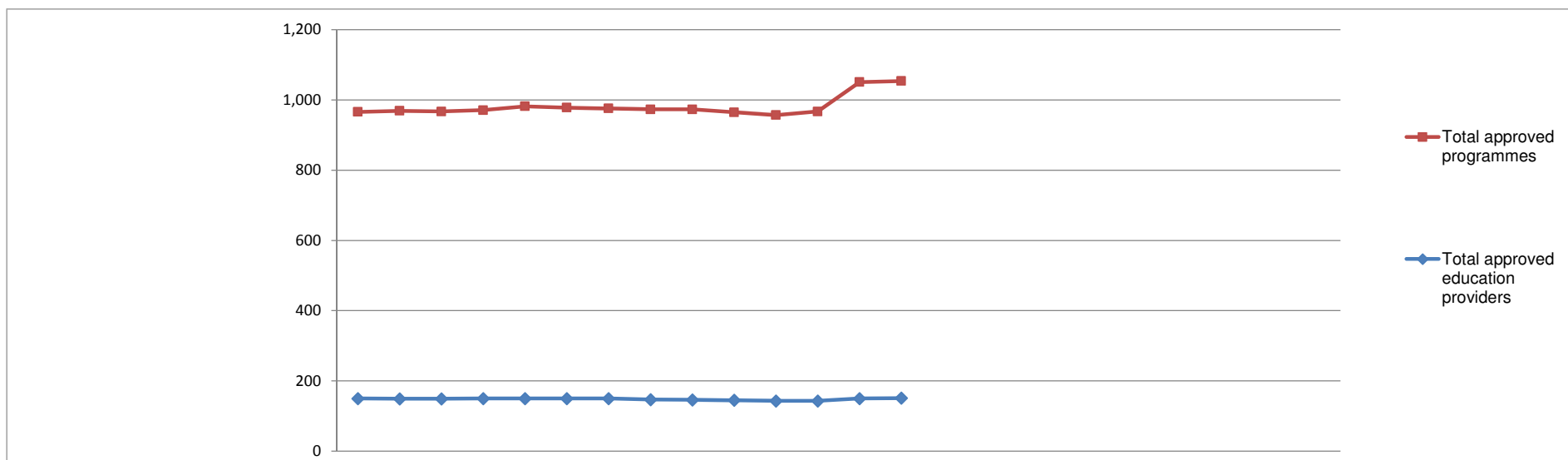
Systems

The Department has spent the last few months familiarising itself with the new internal information system (Microsoft Dynamics and SharePoint), adopting new functionality and reviewing and adapting business processes and practices to better align with the new technology. The work in this area is on-going and we will continue to realign working practices to harvest better efficiencies in the months ahead. The second and final phase of the Education systems build major project resumed in June 2015. The project team is currently finalising the scope of this phase and the balance between development work (to resolve bugs identified since go live) and integration work (with other HCPC information systems). A second go live is proposed for autumn 2015.

Employees

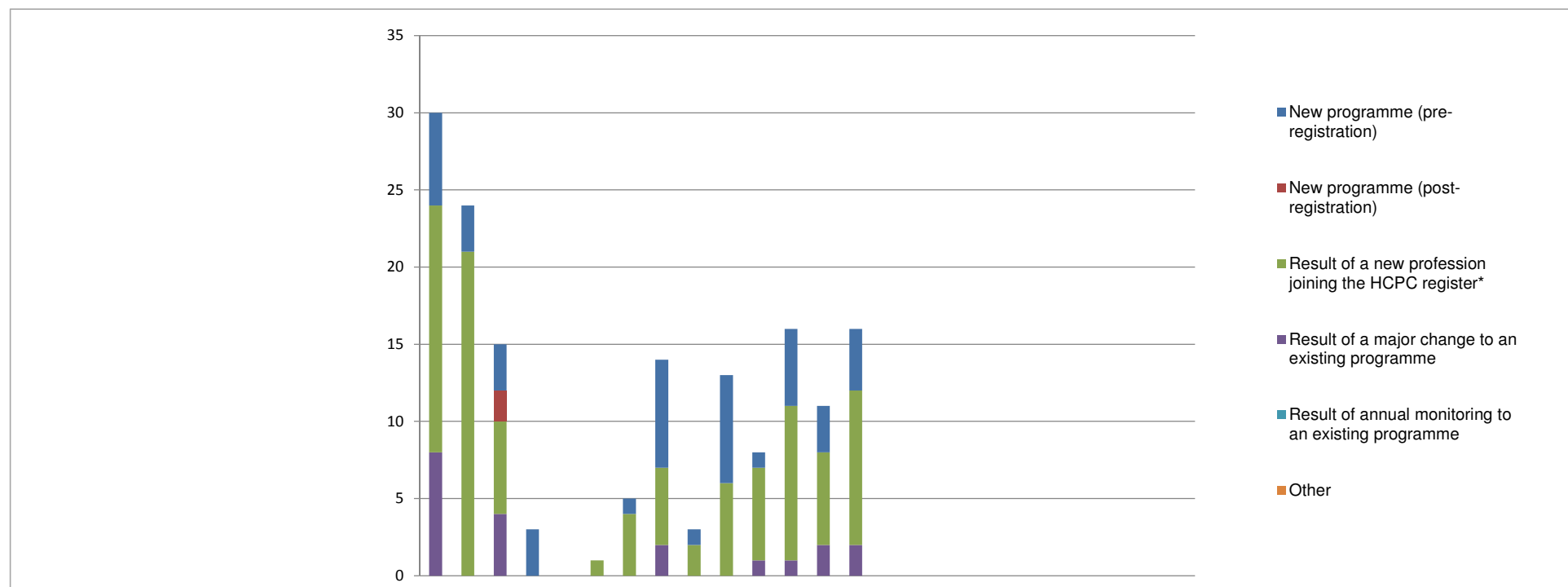
Paula Lescott, Head of Education Systems & Quality, is due to go on maternity leave in July 2015 for approximately one year. Matthew Nelson, Systems and Quality Manager, will act as project lead for the Education systems build major project in Paula's absence. In order to backfill resources within the Systems & Quality function, a temporary post of Senior Systems and Quality Officer has been created. Nicola Byrom (previously Education Officer) took up this post on 1 June 2015. Two permanent Systems and Quality officers will be recruited in early autumn 2015 to take the permanent Systems & Quality function headcount to four. The vacant Education Officer position created from Nicola's move is currently being held open with plans to recruit until quarter three.

Number of approved programmes, by profession April 2014 - March 2016



Profession/entitlement	2014			2015									2016									2011/12	2012/13	2013/14	2014/15	2015/16			
	Apr	May	Jun	Jul	Aug	Sep	Oct	Nov	Dec	Jan	Feb	Mar	Apr	May	Jun	Jul	Aug	Sep	Oct	Nov	Dec	Jan	Feb	Mar	FYE	FYE	FYE	FYE	YTD
Arts therapists	30	30	30	30	30	30	31	29	28	28	28	28	33	33											21	29	30	28	33
Biomedical scientists	57	57	57	57	59	59	58	58	57	55	55	55	63	63											49	60	57	55	63
Chiropodists/ Podiatrists	17	17	17	17	17	17	17	16	16	16	16	16	21	21										20	18	17	16	21	
Clinical scientists	3	3	3	3	3	3	3	3	3	3	3	3	3	3										1	3	3	3	3	
Dietitians	32	32	32	32	32	32	32	32	32	32	32	32	32	32										33	32	32	32	32	
Hearing aid dispensers	18	18	18	19	20	20	20	20	20	19	19	20	23	22										18	15	18	20	22	
Occupational therapists	70	70	70	70	72	71	70	71	71	70	69	69	73	73										74	73	70	69	73	
Operating Department Practitioners	34	34	34	34	36	35	35	35	34	34	34	34	40	40										34	35	34	34	40	
Orthoptists	3	3	3	3	3	3	3	3	3	3	3	3	3	3										3	3	3	3	3	
Paramedics	48	46	46	46	49	47	46	46	48	48	49	53	62	64										50	50	49	53	64	
Physiotherapists	69	69	69	69	70	70	70	70	70	70	69	69	70	69										67	65	69	69	69	
Practitioner psychologists	91	94	94	94	96	95	96	96	96	95	94	93	96	96										95	91	91	93	96	
Prosthetists/Orthotists	3	3	3	3	3	3	3	3	3	3	3	3	3	3										3	3	3	3	3	
Radiographers	51	51	51	51	51	51	51	51	51	51	50	50	52	52										56	53	51	50	52	
Social workers in England	222	222	220	223	225	224	224	223	223	221	219	221	248	249												231	223	221	249
Speech and language therapists	30	31	31	31	31	31	31	31	31	31	31	31	35	36										32	31	30	31	36	
Local anaesthesia	4	4	4	4	4	4	4	4	4	4	4	4	4	4										2	4	4	4	4	
Prescription only medicine	10	10	10	10	10	10	10	10	10	10	9	9	9	9										9	9	10	9	9	
Supplementary prescribing	63	63	63	63	60	61	61	59	58	57	57	59	59	59										77	77	62	59	59	
Independent prescribing	86	86	86	86	86	87	86	87	87	87	87	89	89	90												86	89	90	
Approved mental health professionals	25	26	26	26	25	25	25	26	28	28	26	26	33	33												27	26	26	33
Total approved programmes	966	969	967	971	982	978	976	973	973	965	957	967	1,051	1,054										644	909	968	967	1,054	
Total approved education providers	150	149	149	150	150	150	150	147	146	145	143	143	150	151										128	150	151	143	151	

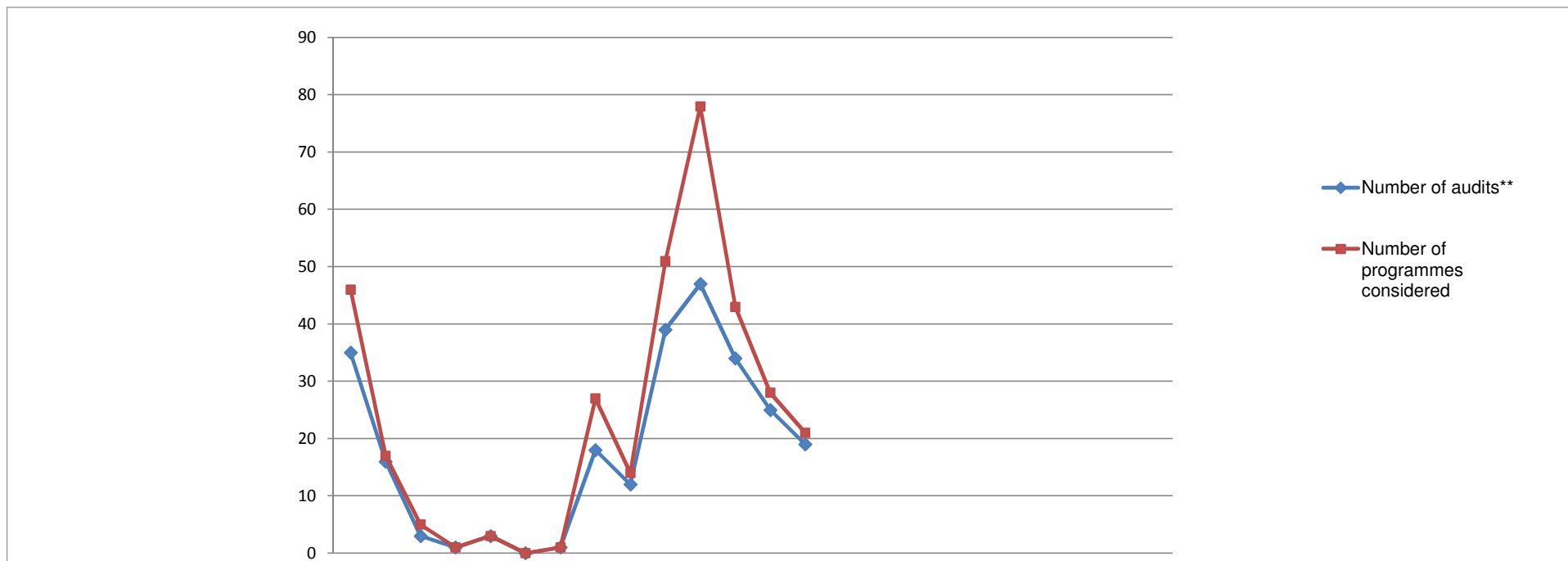
Reasons for approval visits April 2014 - March 2016



Reason for programme visited	2014			2015									2016									2009/10	2010/11	2011/12	2012/13	2013/14	2014/15	2015/16				
	Apr	May	Jun	Jul	Aug	Sep	Oct	Nov	Dec	Jan	Feb	Mar	Apr	May	Jun	Jul	Aug	Sep	Oct	Nov	Dec	Jan	Feb	Mar	FYE	FYE	FYE	FYE	FYE	FYE	YTD	
New programme (pre-registration)	6	3	3	3	0	0	1	7	1	7	1	5	3	4												25	29	17	30	29	37	7
New programme (post-registration)	0	0	2	0	0	0	0	0	0	0	0	0	0	0												1	0	2	1	1	2	0
Result of a new profession joining the HCPC register*	16	21	6	0	0	1	4	5	2	6	6	10	6	10												7	31	34	51	125	77	16
Result of a major change to an existing programme	8	0	4	0	0	0	0	2	0	0	1	1	2	2												42	37	57	21	15	16	4
Result of annual monitoring to an existing programme	0	0	0	0	0	0	0	0	0	0	0	0	0	0												3	4	2	0	0	0	0
Other	0	0	0	0	0	0	0	0	0	0	0	0	0	0												2	0	0	0	0	0	0
Total	30	24	15	3	0	1	5	14	3	13	8	16	11	16												80	101	112	103	170	132	27

* Practitioner psychologists July 2009 - July 2012
 Hearing Aid Dispensers April 2010 - July 2012
 Social workers in England August 2012 - July 2015
 Approved mental health workers September 2013 - July 2015

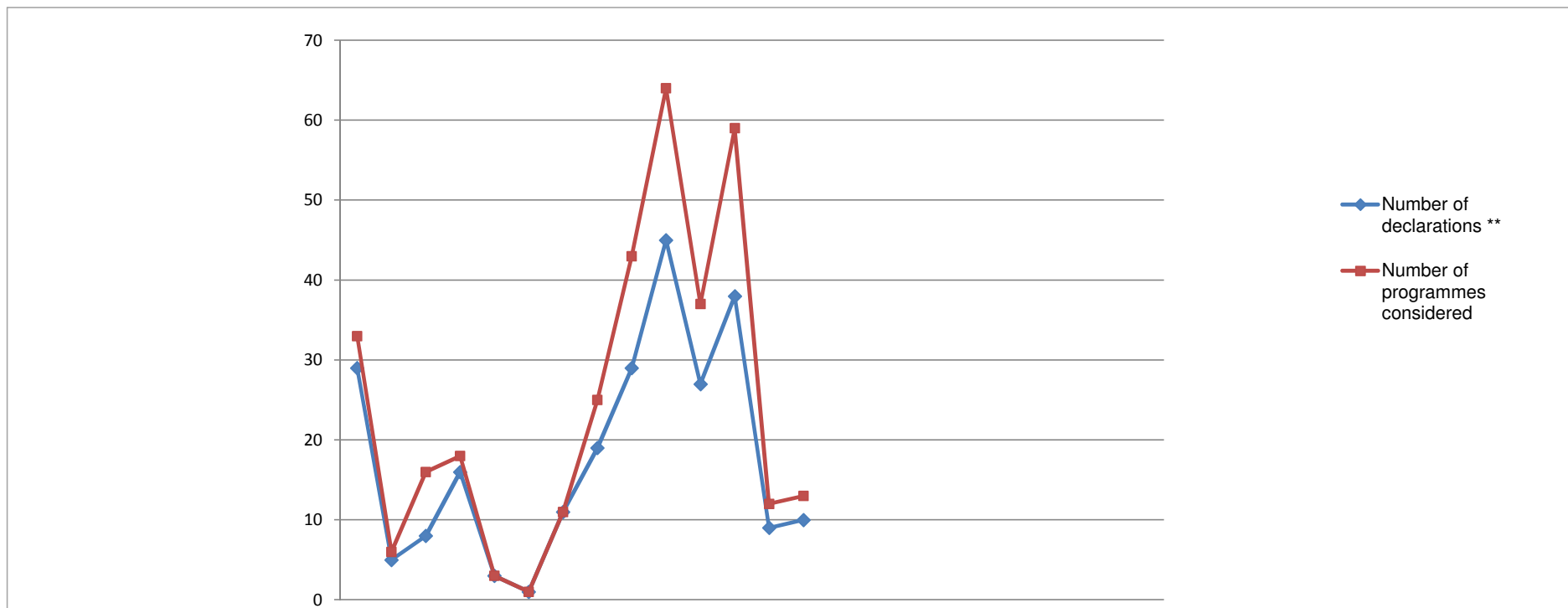
Overview of annual monitoring audit submissions, April 2014 - March 2016



Type of submission	2014			2015												2016								2009/10	2010/11	2011/12	2012/13	2013/14	2014/15	2015/16		
	Apr	May	Jun	Jul	Aug	Sep	Oct	Nov	Dec	Jan	Feb	Mar	Apr	May	Jun	Jul	Aug	Sep	Oct	Nov	Dec	Jan	Feb	Mar	FYE	FYE	FYE	FYE	FYE	FYE	YTD	
Number of audits**	35	16	3	1	3	0	1	18	12	39	47	34	25	19											105	232	163	199	222	209	44	
Number of programmes considered	46	17	5	1	3	0	1	27	14	51	78	43	28	21												158	265	206	282	268	286	49

** From March 2015, this records the number of cases

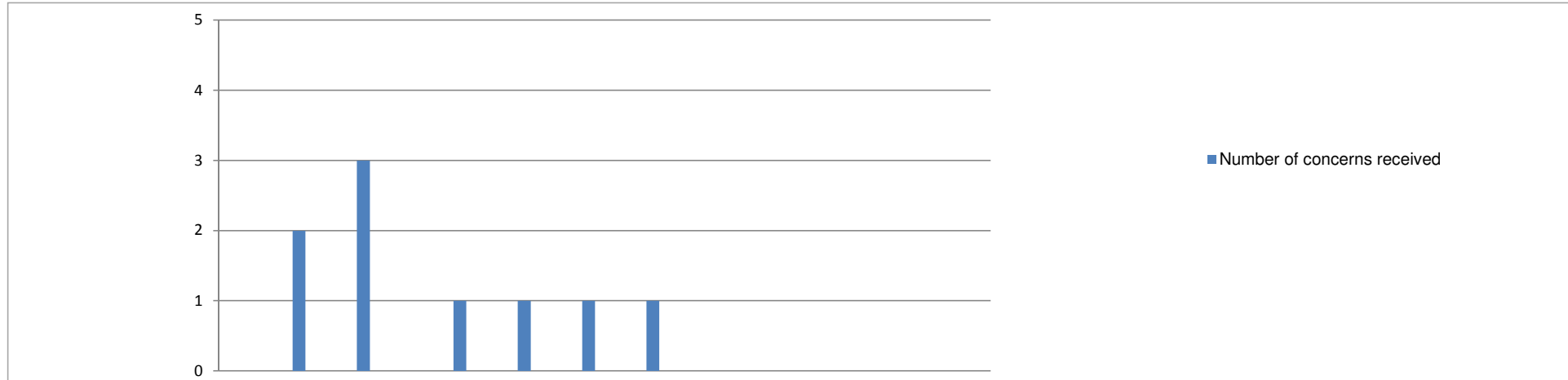
Overview of annual monitoring declarations, April 2014 - March 2016



Type of submission	2014			2015												2016							2009/10	2010/11	2011/12	2012/13	2013/14	2014/15	2015/16		
	Apr	May	Jun	Jul	Aug	Sep	Oct	Nov	Dec	Jan	Feb	Mar	Apr	May	Jun	Jul	Aug	Sep	Oct	Nov	Dec	Jan	Feb	Mar	FYE	FYE	FYE	FYE	FYE	FYE	YTD
Number of declarations **	29	5	8	16	3	1	11	19	29	45	27	38	9	10											105	232	232	199	222	231	19
Number of programmes considered	33	6	16	18	3	1	11	25	43	64	37	59	12	13											142	237	249	267	297	316	25

** From March 2015, this records the number of cases

Overview of concerns about approved programmes, April 2014 - March 2016



	2014			2015									2016		
	Apr	May	Jun	Jul	Aug	Sep	Oct	Nov	Dec	Jan	Feb	Mar	Apr	May	Jun
Number of concerns received	0	0	2	0	3	0	0	1	0	1	0	1	0	1	

	2009/10 FYE	2010/11 FYE	2011/12 FYE	2012/13 FYE	2013/14 FYE	2014/15 FYE	2015/16 YTD
Total number of approved progs	480	623	644	909	968	967	1,054
% programmes affected by concerns	1.0%	0.8%	0.8%	0.7%	0.5%	0.8%	0.1%

Outcome of process	2014			2015									2016		
	Apr	May	Jun	Jul	Aug	Sep	Oct	Nov	Dec	Jan	Feb	Mar	Apr	May	Jun
Directed visit	0	0	0	0	0	0	0	0	0	0	0	0	0	0	0
Approval process	0	0	0	0	0	0	0	0	0	0	0	0	0	0	0
Major change process	0	0	0	0	0	0	0	0	0	0	0	0	0	0	0
Annual monitoring process	0	0	0	0	0	0	0	0	0	0	0	0	0	0	0
Withdrawn	0	0	0	0	0	0	0	0	0	0	0	0	0	0	0
Unsubstantiated	0	0	2	0	2	0	0	1	0	1	0	0	0	0	0
Pending	0	0	0	0	1	0	0	0	0	0	0	1	0	1	

	2009/10 FYE	2010/11 FYE	2011/12 FYE	2012/13 FYE	2013/14 FYE	2014/15 FYE	2015/16 YTD
	0	0	0	0	0	0	0
	0	0	1	0	1	0	0
	1	0	1	0	0	0	0
	0	1	0	0	0	0	0
	1	0	0	0	0	0	0
	3	4	3	6	4	7	0
	0	0	0	0	0	1	1