

Council, 13 May 2015

Education Report

Executive summary and recommendations

Introduction

The report sets out the main activities of the Education Department in February, March and April 2015. It includes statistical information and highlights key work undertaken.

Decision

The Council is requested to discuss the report.

Background information

None.

Resource implications

The resources for the Department are set out in the annual work plans and budgets.

Financial implications

The costs associated with all activities are set out in the budgets.

Appendices

Education management information pack



Education Department

Management Information Pack

Abigail Gorringe
Director of Education

May 2015

Table of contents

Section 1: Management commentary

Section 2: Management statistics

1. Number of approved programmes, by profession, April 2013 – March 2015
2. Overview of approval visits, April 2013 – March 2015
3. Reasons for approval visits, April 2013 – March 2015
4. Overview of annual monitoring submissions, April 2013 – March 2015
5. Overview of major change submissions, April 2013 – March 2015
6. Overview of concerns about approved programmes, April 2013 – March 2015

1 Management commentary

Approval process

The Department has spent the last few months organising and attending approval visits in the 2014-15 academic year. In total, 66 visits across 100 programmes have been arranged from September 2014 - August 2015. The majority of visits are to social worker and AMHP programmes (56%), with a significant proportion (24%) to new paramedic programmes. In February and March 2015, 15 visits took place involving 24 programmes. A further 28 visits are planned from April – August 2015. The overall schedule for 2014-15 is now complete since we require six months' notice from education providers to arrange a visit.

The Department has begun scheduling approval visits in the 2015–16 academic year. In total, 6 visits across 12 programmes have been formally scheduled. These are a mixture of new and existing programmes from across five professions.

Annual monitoring process

The Department remains in the peak period for the annual monitoring process in the 2014–15 academic year. The first five assessment days took place in February and April 2015. Three further assessment days are planned for May 2015 and it is envisaged that the majority of visitor reports will be considered by Education and Training Panels in May, June and August 2015.

Major change process

The Department considered 51 new major change notifications, covering 98 programmes from January – March 2015. The Education and Training Panel in March 2015 considered 54 programmes which had recently engaged with the major change process. The Panel decided that 53 of these programmes continued to meet our standards of education and training and one required an approval visit.

Concerns process

The Department received one new concern in March 2015 which met our criteria for further investigation. A fitness to practice investigation relating to a concern originally received in August 2014 concluded in April 2015 and the complainant has been contacted to see if they wish to provide more information in support of their concern raised about the approved programme. The documentation initially received did not provide enough information for us to decide whether the concern meets our criteria for further investigation.

See section 2 for more statistical information on the above operational processes.

Website

In 2014–15, the Department undertook a full review of the education section of the HCPC website. Changes were made to increase usability and consistency across the pages and specific updates were made around service user and carer involvement in

education and training, the standards of proficiency and the major change process. The revised layout to the education webpages was rolled out in March 2015 at www.hcpc-uk.org/education

Partners

Over 50 applications were received from prospective art therapist, biomedical scientist, prosthetist / orthotist, chiropodist/podiatrist, clinical, counselling and forensic psychologist visitors in April and interviews take place later this month. Successful candidates will attend new visitor training in July 2015.

24 visitors attended refresher training sessions in February 2015, meaning approximately 120 visitors have attended refresher sessions in 2014-15.

Publications

The Education annual report 2014 was published earlier this month. Various communications activities are now underway to disseminate the report and its findings, including articles in Education Update and In-Focus; an on-line news item; YouTube video and social media activity.

Liaison with stakeholders

The nineteenth issue of Education Update was distributed to stakeholders' week commencing 4 May and made available on the HCPC website at: www.hcpc-uk.org/education/update.

Members of the Department met with the following stakeholders in February, March and April 2015:

- NHS Wales (Shared Services Partnership)
- Quality Assurance Agency (QAA) and UK Interprofessional group (UKIPG) Professional and Statutory Bodies Forum
- Department for Education (Social Work Reform Unit)
- Think Ahead
- Health Education England's Education and Training Paramedic Steering Group
- The College of Social Work
- UK Faculty of Public Health
- The Council of Healthcare Science in Higher Education

Major project - Education systems build

The new information system (Microsoft Dynamics and SharePoint) went live in the Department in March 2015. This followed a final cycle of user acceptance testing and two weeks of training in February 2015; as well as data migration activities in early March 2015. We opted for a 'soft launch' to both support users and mitigate against any repercussion externally during our peak period of regulatory operations. Department members have adapted well to the new system, with April 2015 acting as a transitional and

consolidatory month. Additional functionality has been rolled out in April and May 2015, with on-going changes being made to internal operating practices and guidance to harvest better efficiencies and realign to the new systems.

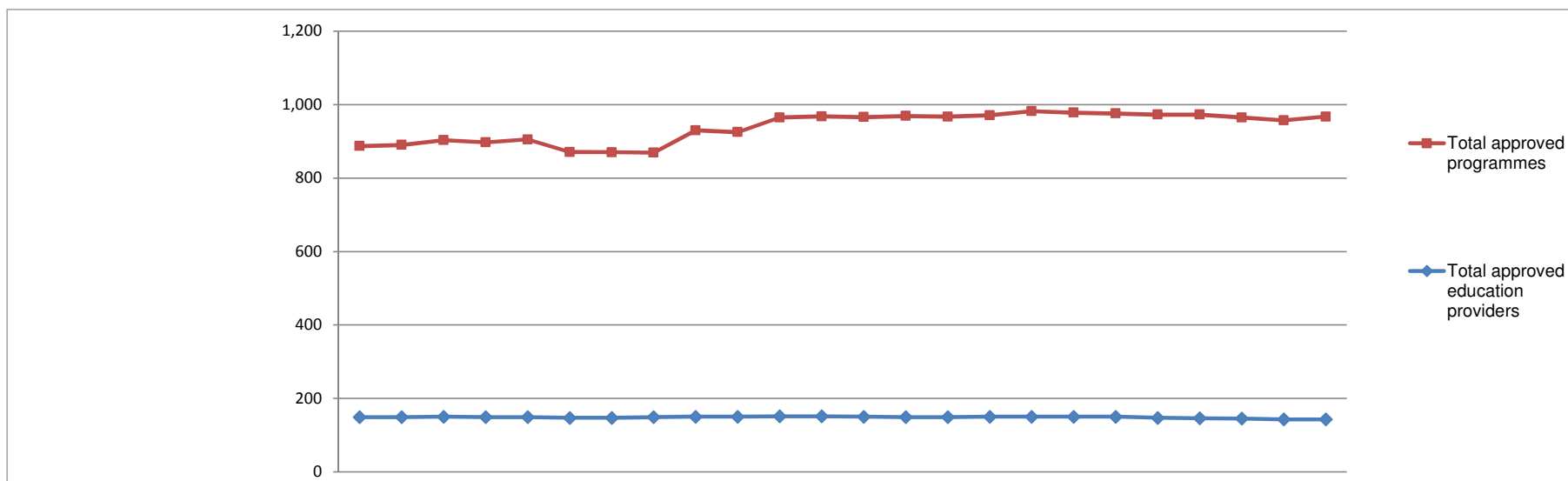
The second and final phase of the major project is due to start in June 2015. It will partly focus on development work to resolve bugs identified since go live and partly on integrations with other HCPC information systems. A second go live is proposed for autumn 2015.

Employees

The new Systems and Quality function within the Department became effective on 1 May 2015. Following two separate recruitment campaigns, Paula Lescott was appointed as Head of Education Systems & Quality and Matthew Nelson as the Systems and Quality Manager. Both were internal candidates who have been seconded to the major project for the last two years. The new function has a budgeted headcount of four; with two new officer posts currently vacant. Arrangements are currently being made to cover the maternity leave of Paula Lescott from July 2015.

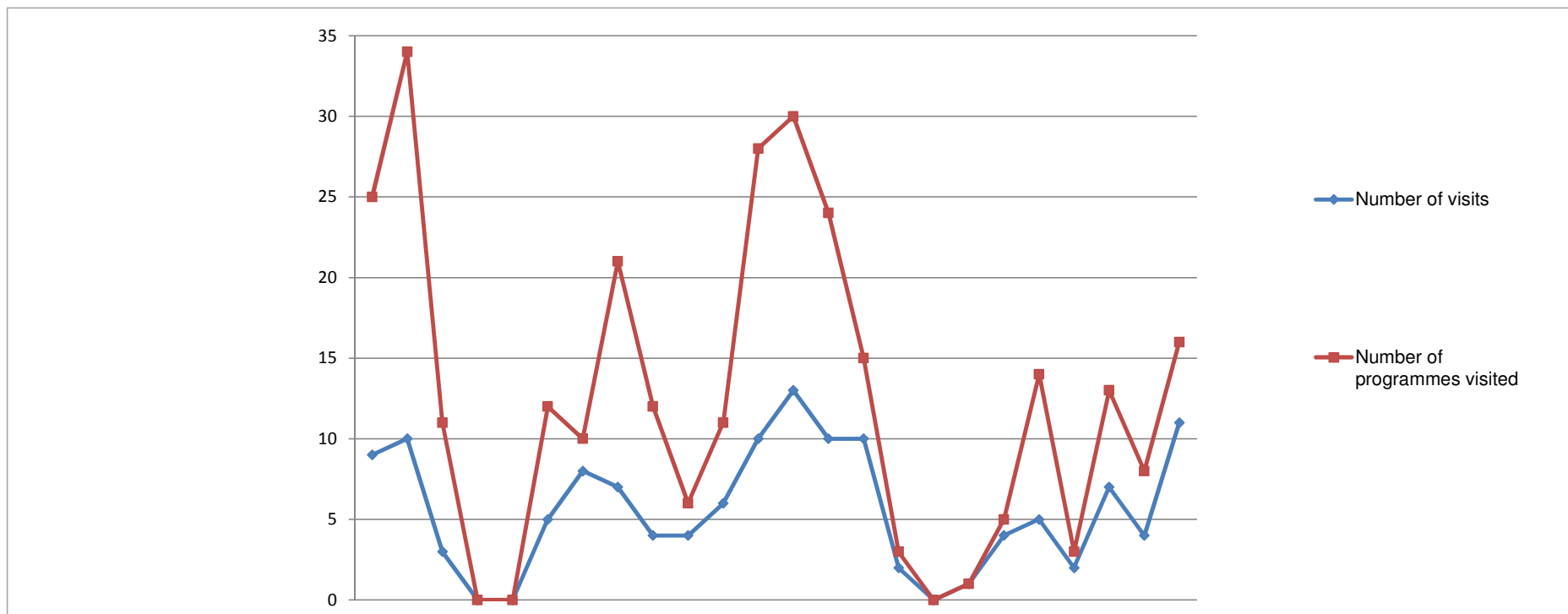
The total number of employees across the Department remains at seventeen, with a budgeted headcount of 19 expected by the end of 2015-16.

Number of approved programmes, by profession April 2013 - March 2015



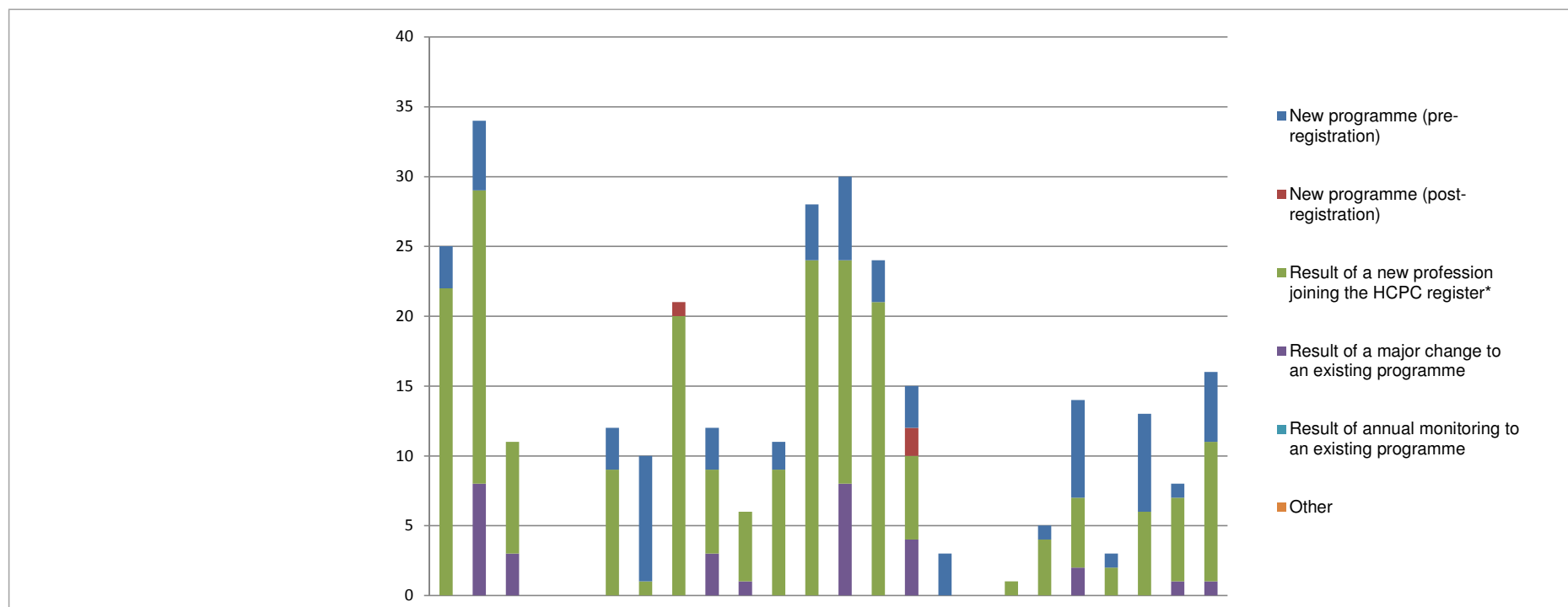
Profession/entitlement	2013			2014									2015									2011/12	2012/13	2013/14	2014/15			
	Apr	May	Jun	Jul	Aug	Sep	Oct	Nov	Dec	Jan	Feb	Mar	Apr	May	Jun	Jul	Aug	Sep	Oct	Nov	Dec	Jan	Feb	Mar	FYE	FYE	FYE	FYE
Arts therapists	29	29	29	29	29	29	29	29	29	30	30	30	30	30	30	30	30	31	29	28	28	28	28	21	29	30	28	
Biomedical scientists	58	56	57	57	57	57	55	55	55	54	54	57	57	57	57	59	59	58	58	57	55	55	55	49	60	57	55	
Chiropodists/ Podiatrists	17	17	17	17	17	17	17	17	16	16	16	17	17	17	17	17	17	17	16	16	16	16	16	20	18	17	16	
Clinical scientists	3	3	3	3	3	3	3	3	3	3	3	3	3	3	3	3	3	3	3	3	3	3	3	1	3	3	3	
Dietitians	32	32	32	32	32	32	32	32	32	32	32	32	32	32	32	32	32	32	32	32	32	32	32	33	32	32	32	
Hearing aid dispensers	15	15	17	17	18	18	18	18	18	18	18	18	18	18	18	19	20	20	20	20	20	19	19	18	15	18	20	
Occupational therapists	73	77	78	75	75	75	75	73	73	70	71	70	70	70	70	72	71	70	71	71	70	69	69	74	73	70	69	
Operating Department Practitioners	35	37	37	35	35	34	34	34	34	33	34	34	34	34	34	36	35	35	35	34	34	34	34	34	35	34	34	
Orthoptists	3	3	3	3	3	3	3	3	3	3	3	3	3	3	3	3	3	3	3	3	3	3	3	3	3	3	3	
Paramedics	50	49	50	50	50	48	48	49	49	49	49	49	48	46	46	46	49	47	46	46	48	48	49	50	50	49	53	
Physiotherapists	65	66	67	68	67	67	67	65	65	65	65	69	69	69	69	70	70	70	70	70	70	69	69	67	65	69	69	
Practitioner psychologists	91	93	93	93	92	93	93	91	91	91	91	91	91	94	94	94	96	95	96	96	96	95	94	93	95	91	91	93
Prosthetists/Orthotists	3	3	3	3	3	3	3	3	3	3	3	3	3	3	3	3	3	3	3	3	3	3	3	3	3	3	3	
Radiographers	53	53	53	53	53	53	53	53	53	51	51	51	51	51	51	51	51	51	51	51	51	51	50	50	56	53	51	50
Social workers in England	212	209	216	214	221	222	221	225	225	224	226	223	222	222	220	223	225	224	224	223	223	221	219	221		231	223	221
Speech and language therapists	31	32	32	32	32	32	32	32	32	32	31	30	30	31	31	31	31	31	31	31	31	31	31	31	32	31	30	31
Local anaesthesia	4	4	4	4	4	4	4	4	4	4	4	4	4	4	4	4	4	4	4	4	4	4	4	2	4	4	4	
Prescription only medicine	9	9	9	9	10	10	10	10	10	10	10	10	10	10	10	10	10	10	10	10	10	9	9	9	9	9	10	9
Supplementary prescribing	77	76	76	76	77	44	46	46	55	58	62	62	63	63	63	63	60	61	61	59	58	57	59	77	77	62	59	
Independent prescribing										53	53	86	86	86	86	86	86	87	86	87	87	87	89			86	89	
Approved mental health professionals	27	27	27	27	27	27	27	27	27	26	26	26	25	26	26	26	25	25	25	26	28	28	26	26		27	26	26
Total approved programmes	887	890	903	897	905	871	870	869	930	925	965	968	966	969	967	971	982	978	976	973	973	965	957	967	644	909	968	967
Total approved education providers	149	149	150	149	149	147	147	149	150	150	151	151	150	149	149	150	150	150	150	147	146	145	143	143	128	150	151	143

Overview of approval visits April 2013 - March 2015



Overview of approval visits	2013			2014									2015						2009/10	2010/11	2011/12	2012/13	2013/14	2014/15						
	Apr	May	Jun	Jul	Aug	Sep	Oct	Nov	Dec	Jan	Feb	Mar	Apr	May	Jun	Jul	Aug	Sep	Oct	Nov	Dec	Jan	Feb	Mar	FYE	FYE	FYE	FYE	FYE	FYE
Number of visits	9	10	3	0	0	5	8	7	4	4	6	10	13	10	10	2	0	1	4	5	2	7	4	11	38	58	59	56	66	69
Number of programmes visited	25	34	11	0	0	12	10	21	12	6	11	28	30	24	15	3	0	1	5	14	3	13	8	16	80	101	112	103	170	132

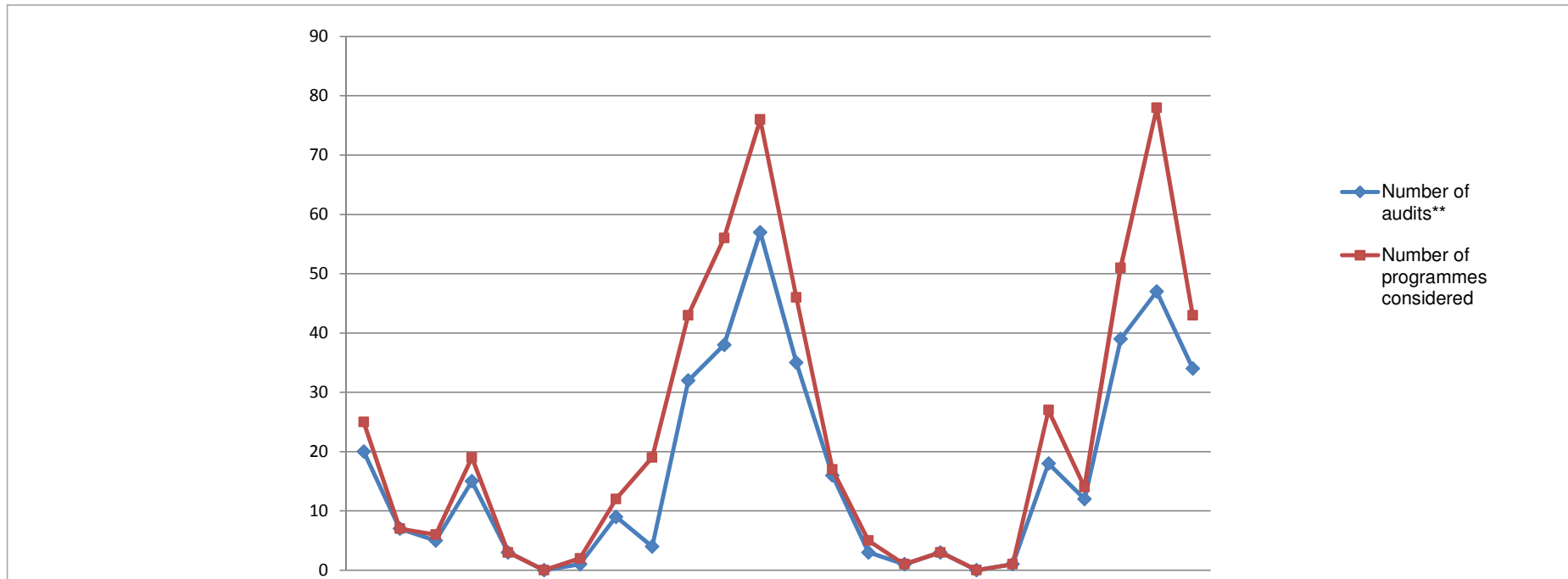
Reasons for approval visits April 2013 - March 2015



Reason for programme visited	2013			2014												2015												2009/10	2010/11	2011/12	2012/13	2013/14	2014/15
	Apr	May	Jun	Jul	Aug	Sep	Oct	Nov	Dec	Jan	Feb	Mar	Apr	May	Jun	Jul	Aug	Sep	Oct	Nov	Dec	Jan	Feb	Mar	FYE	FYE	FYE	FYE	FYE	FYE			
New programme (pre-registration)	3	5	0	0	0	3	9	0	3	0	2	4	6	3	3	3	0	0	1	7	1	7	1	5	25	29	17	30	29	37			
New programme (post-registration)	0	0	0	0	0	0	0	1	0	0	0	0	0	0	2	0	0	0	0	0	0	0	0	0	1	0	2	1	1	2			
Result of a new profession joining the HCPC register*	22	21	8	0	0	9	1	20	6	5	9	24	16	21	6	0	0	1	4	5	2	6	6	10	7	31	34	51	125	77			
Result of a major change to an existing programme	0	8	3	0	0	0	0	0	3	1	0	0	8	0	4	0	0	0	0	2	0	0	1	1	42	37	57	21	15	16			
Result of annual monitoring to an existing programme	0	0	0	0	0	0	0	0	0	0	0	0	0	0	0	0	0	0	0	0	0	0	0	0	3	4	2	0	0	0			
Other	0	0	0	0	0	0	0	0	0	0	0	0	0	0	0	0	0	0	0	0	0	0	0	0	2	0	0	0	0	0			
Total	25	34	11	0	0	12	10	21	12	6	11	28	30	24	15	3	0	1	5	14	3	13	8	16	80	101	112	103	170	132			

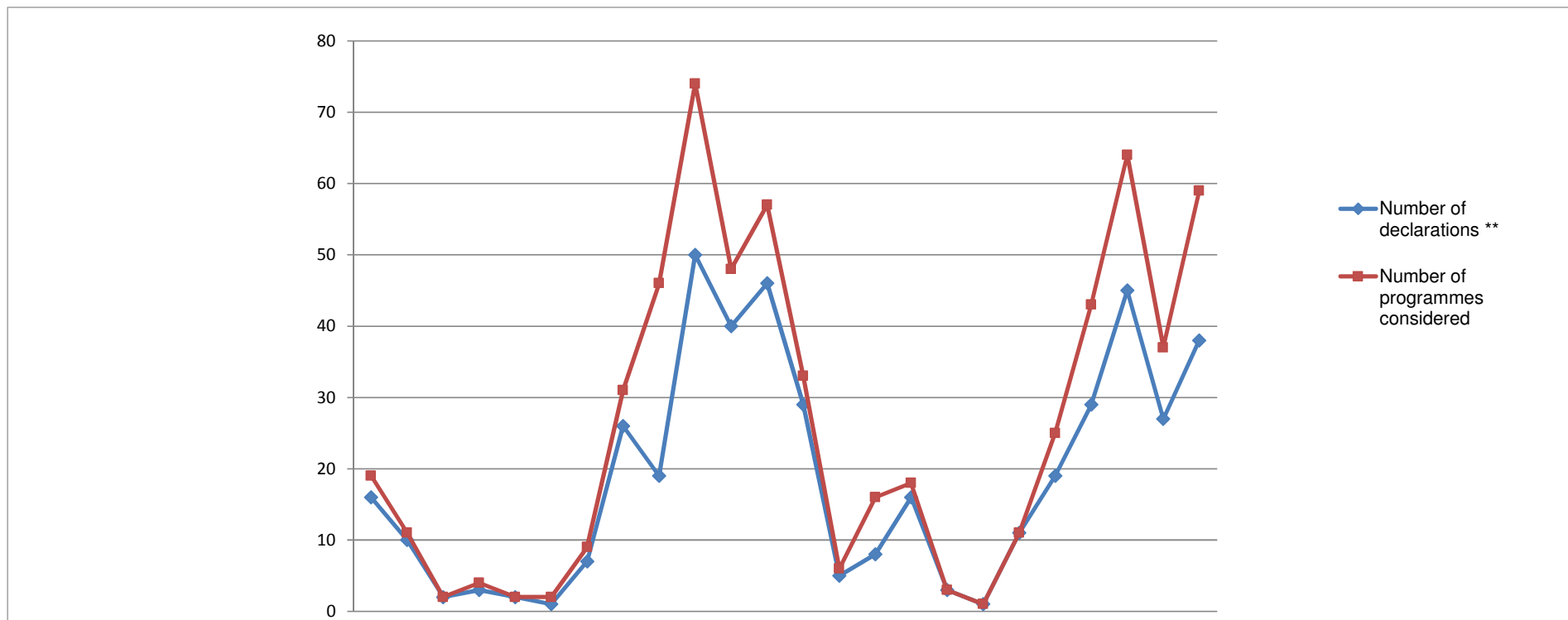
* Practitioner psychologists July 2009 - July 2012
 Hearing Aid Dispensers April 2010 - July 2012
 Social workers in England August 2012 - July 2015
 Approved mental health workers September 2013 - July 2015

Overview of annual monitoring audit submissions, April 2013 - March 2015



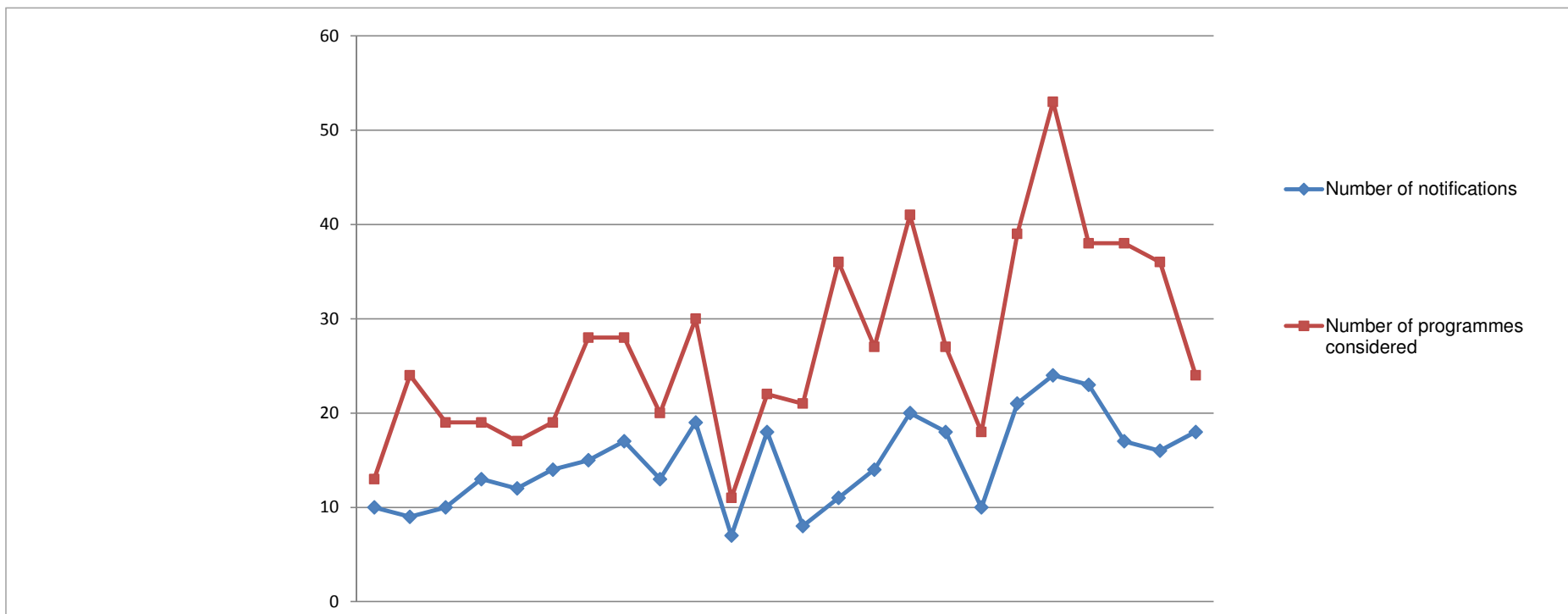
Type of submission	2013			2014									2015									2009/10	2010/11	2011/12	2012/13	2013/14	2014/15			
	Apr	May	Jun	Jul	Aug	Sep	Oct	Nov	Dec	Jan	Feb	Mar	Apr	May	Jun	Jul	Aug	Sep	Oct	Nov	Dec	Jan	Feb	Mar	FYE	FYE	FYE	FYE	FYE	FYE
Number of audits**	20	7	5	15	3	0	1	9	4	32	38	57	35	16	3	1	3	0	1	18	12	39	47	34	105	232	163	199	222	209
Number of programmes considered	25	7	6	19	3	0	2	12	19	43	56	76	46	17	5	1	3	0	1	27	14	51	78	43	158	265	206	282	268	286

Overview of annual monitoring declarations, April 2013 - March 2015

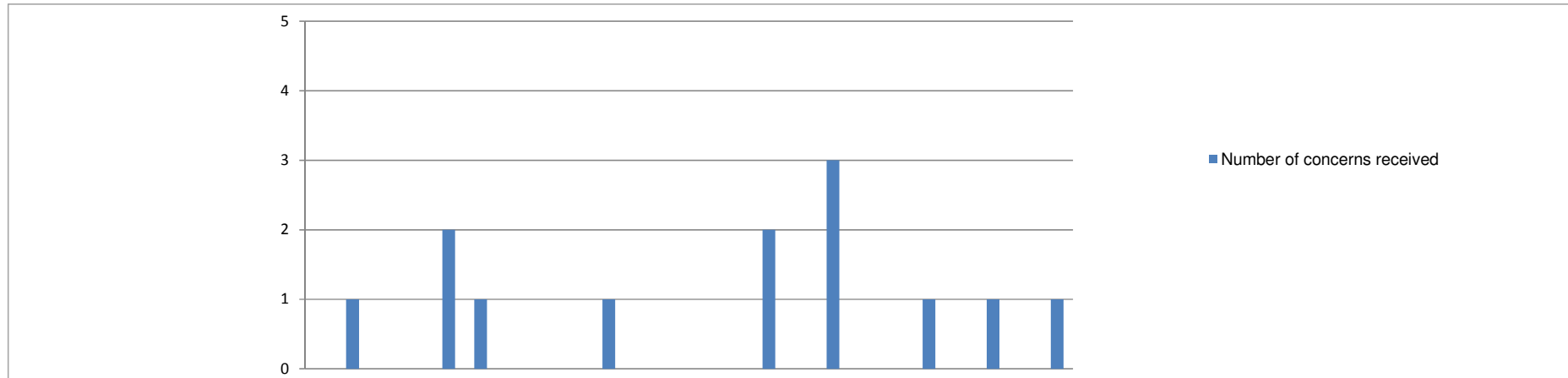


Type of submission	2013			2014									2015						2009/10	2010/11	2011/12	2012/13	2013/14	2014/15						
	Apr	May	Jun	Jul	Aug	Sep	Oct	Nov	Dec	Jan	Feb	Mar	Apr	May	Jun	Jul	Aug	Sep	Oct	Nov	Dec	Jan	Feb	Mar	FYE	FYE	FYE	FYE	FYE	FYE
Number of declarations **	16	10	2	3	2	1	7	26	19	50	40	46	29	5	8	16	3	1	11	19	29	45	27	38	105	232	232	199	222	231
Number of programmes considered	19	11	2	4	2	2	9	31	46	74	48	57	33	6	16	18	3	1	11	25	43	64	37	59	142	237	249	267	297	316

Overview of major change submissions, April 2013 - March 2015



Overview of notifications	2013			2014						2015						2009/10	2010/11	2011/12	2012/13	2013/14	2014/15									
	Apr	May	Jun	Jul	Aug	Sep	Oct	Nov	Dec	Jan	Feb	Mar	Apr	May	Jun	Jul	Aug	Sep	Oct	Nov	Dec	Jan	Feb	Mar	FYE	FYE	FYE	FYE	FYE	FYE
Number of notifications	10	9	10	13	12	14	15	17	13	19	7	18	8	11	14	20	18	10	21	24	23	17	16	18	119	146	174	146	157	200
Number of programmes considered	13	24	19	19	17	19	28	28	20	30	11	22	21	36	27	41	27	18	39	53	38	38	36	24	197	250	311	266	250	398



	2013			2014									2015											
	Apr	May	Jun	Jul	Aug	Sep	Oct	Nov	Dec	Jan	Feb	Mar	Apr	May	Jun	Jul	Aug	Sep	Oct	Nov	Dec	Jan	Feb	Mar
Number of concerns received	0	1	0	0	2	1	0	0	0	0	1	0	0	0	2	0	3	0	0	1	0	1	0	1

	2009/10 FYE	2010/11 FYE	2011/12 FYE	2012/13 FYE	2013/14 FYE	2014/15 FYE
Total number of approved progs	480	623	644	909	968	967
% programmes affected by concerns	1.0%	0.8%	0.8%	0.7%	0.5%	0.8%

Outcome of process	2013			2014									2015											
	Apr	May	Jun	Jul	Aug	Sep	Oct	Nov	Dec	Jan	Feb	Mar	Apr	May	Jun	Jul	Aug	Sep	Oct	Nov	Dec	Jan	Feb	Mar
Directed visit	0	0	0	0	0	0	0	0	0	0	0	0	0	0	0	0	0	0	0	0	0	0	0	0
Approval process	0	0	0	0	1	0	0	0	0	0	0	0	0	0	0	0	0	0	0	0	0	0	0	0
Major change process	0	0	0	0	0	0	0	0	0	0	0	0	0	0	0	0	0	0	0	0	0	0	0	0
Annual monitoring process	0	0	0	0	0	0	0	0	0	0	0	0	0	0	0	0	0	0	0	0	0	0	0	0
Withdrawn	0	0	0	0	0	0	0	0	0	0	0	0	0	0	0	0	0	0	0	0	0	0	0	0
Unsubstantiated	0	1	0	0	1	1	0	0	0	1	0	0	0	0	2	0	2	0	0	1	0	1	0	0
Pending	0	0	0	0	0	0	0	0	0	0	0	0	0	0	0	0	1	0	0	0	0	0	0	1

	2009/10 FYE	2010/11 FYE	2011/12 FYE	2012/13 FYE	2013/14 FYE	2014/15 FYE
	0	0	0	0	0	0
	0	0	1	0	1	0
	1	0	1	0	0	0
	0	1	0	0	0	0
	1	0	0	0	0	0
	3	4	3	6	4	6
	0	0	0	0	0	2