

Council, 19 May 2016

Education Report

Executive summary and recommendations

Introduction

The report sets out the main activities of the Education Department in March and April 2016. It includes statistical information and highlights key work undertaken.

Particular attention is drawn to –

- The progression of operational workload in the 2015-16 academic year;
- The publication and promotion of the annual report covering the 2014-15 academic year; and
- The range of stakeholder meetings.

Decision

The Council is invited to discuss the report.

Background information

None.

Resource implications

The resources for the Department are set out in the annual work plans and budgets.

Financial implications

The costs associated with all activities are set out in the budgets.

Appendices

Education management information pack.



Education Department

Management Information Pack

Abigail Gorringe
Director of Education

May 2016

Table of contents

Section 1: Management commentary

Section 2: Management statistics

1. Number of approved programmes, by profession, April 2015 – March 2017
2. Overview of approval visits, April 2015 – March 2017
3. Reasons for approval visits, April 2015 – March 2017
4. Overview of annual monitoring submissions, April 2015 – March 2017
5. Overview of major change submissions, April 2015 – March 2017
6. Overview of concerns about approved programmes, April 2015 – March 2017
7. Overview of department workload, April 2015 – March 2017

1 Management commentary

Approval process

The workload in the 2015-16 academic year is progressing well. There are 45 visits scheduled within it, which is 30% less than the previous academic year. Given the six month notice period we require, we are not expecting to arrange any additional visits to new programmes now. This significant reduction was anticipated as it is the first academic year since we were established where there are no visits to professions new to the Register. The profile of professions being visited is also changing. The same two professions; paramedics (33%) and social workers (19%) continue to dominate the visit schedule. However, their overall percentage is reducing. Other professions/entitlements account for 48% of visits in the 2015-16 academic year. In February 2016, we carried out our first visit to a programme for podiatrists practising podiatric surgery. This is a new programme and the visitors' recommendation is due for consideration at the Education and Training Panel on 20 May 2016. Preparation work is also underway for the next academic year, 2016-17. There are six visits scheduled within it and a further three at enquiry stage.

Annual monitoring process

The workload in the 2015-16 academic year is progressing well and we are towards the end of our peak period now (January to June 2016). The 2015-16 academic year workload for annual monitoring is the highest that we have seen since we were established. We are expecting approximately 900 programmes to engage with the process, compared to 653 in the last (2014-15) academic year. This significant increase (40%) is mainly due to social worker and approved mental health practitioners (AMHP) engaging for the first time. We held two assessment days per month from January – April 2016 to respond to the increased numbers. A final assessment day is scheduled in June 2016.

Major change process

The workload in the 2015-16 academic year is progressing well. We are continuing to receive a significantly higher number of notifications compared to the last academic year (2014-15). We have received 30% more notifications between September 2015 and March 2016 compared to the same period the year before. Some of this increase was anticipated due to social worker and approved mental health practitioners increasing their engagement with this process, however much is due to unforeseeable, reactionary and one-off changes at education providers. The average time taken to consider a complete case is at 2.4 months. In April 2016, we have received the first notifications of changes to supplementary/independent prescribing programmes to accommodate the recent change in medicines legislation for dietitians and therapeutic radiographers.

Concerns process

The Department received no new concerns from January – March 2016. As of 31 March 2016, there were two active concerns – one at the initial enquiry stage and one which is at the investigation stage and is due to be considered by the Education and Training Committee in June 2016.

See section 2 for more statistical information on the above operational processes.

Partners

Plans are underway, with the Partners Department, for recruitment and training activities in the 2016-17 financial year. Recruitment is currently on-going for 15 visitors (a mix of orthoptist, social work, AMHP and lay) to ensure sufficient numbers are maintained. Approximately 140 existing visitors are due to attend refresher training and five days are planned in autumn 2016.

Seminars

In February and March 2016, two seminars took place in London and Edinburgh, with 55+ attendees in total. The topic was our 'approach to change' and was intended to remind education providers of the importance of our monitoring processes and expectations on them to engage with us. We are analysing feedback to consider whether there is value in repeating them.

Annual report

The annual report covering the 2014-15 academic year was published in early May 2016. It has been publicised via Education Update, social media and on-line, and will be supported by a blog piece and infographic.

Liaison with stakeholders

Members of the Department met with the following stakeholders and/or attended the following events from February to April 2016:

- Quality Assurance Agency's (QAA) Professional Statutory and Regulatory Bodies Steering Group
- NHS Wales Shared Services Partnership (Workforce, Education and Development Services)
- Health Education England's Joint Professional Regulator Symposium
- Quality Assurance Agency's Professional Statutory and Regulatory Bodies Forum
- Scottish Social Service Council and Northern Ireland Social Care Council

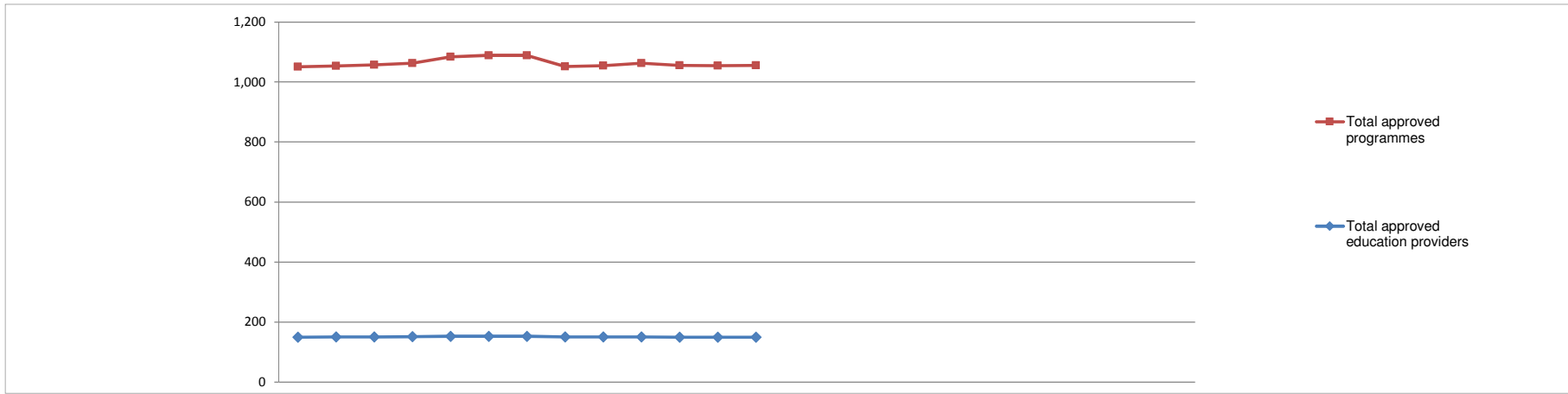
Systems

The final phase of the Education systems build major project is on-going. The deployment of developments to Microsoft Dynamics/SharePoint took place in April 2016. Integration work with NetRegulate and the website is on-going through May 2016.

Employees

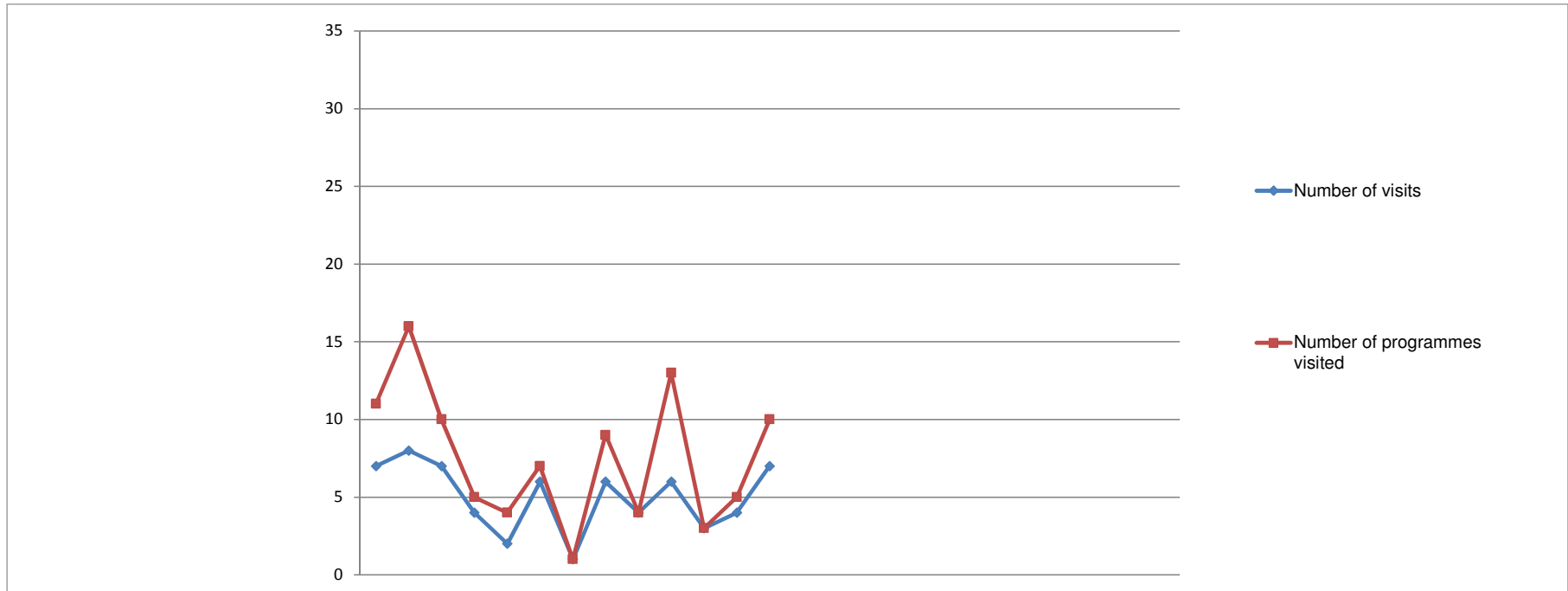
The Department has two new employees. Rosie Rumney joined as Systems and Quality Officer in March 2016 and Rebecca Stent joined as an Education Officer in April 2016. The Department is now at its budgeted headcount of 19. Recruitment will commence for a temporary PA to the Director of Education to cover maternity leave for Liz Johnson from June 2016 – July 2017.

Number of approved programmes, by profession April 2015 - March 2017



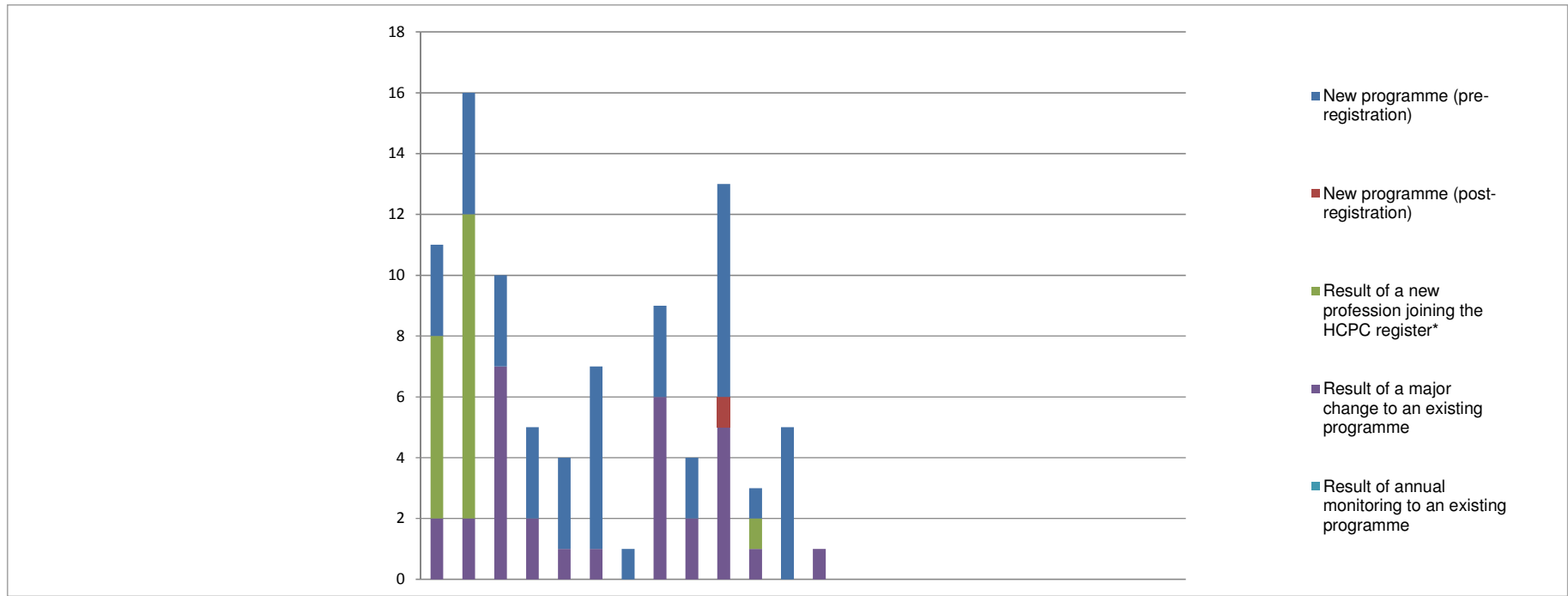
Profession/entitlement	2015												2016												2017												2011/12 FYE	2012/13 FYE	2013/14 FYE	2014/15 FYE	2015/16 FYE	2016/17 YTD
	Apr	May	Jun	Jul	Aug	Sep	Oct	Nov	Dec	Jan	Feb	Mar	Apr	May	Jun	Jul	Aug	Sep	Oct	Nov	Dec	Jan	Feb	Mar	Apr	May	Jun	Jul	Aug	Sep	Oct	Nov	Dec	Jan	Feb	Mar						
Arts therapists	33	33	33	32	33	33	33	31	31	31	31	31	31																				21	29	30	28	31	31				
Biomedical scientists	63	63	63	63	65	65	65	61	61	65	65	65																				49	60	57	55	65	65					
Chiroprodists/ Podiatrists	21	21	21	21	23	23	23	20	20	20	20	20																				20	18	17	16	20	20					
Clinical scientists	3	3	3	3	3	3	3	3	3	3	3	3																				1	3	3	3	3	3					
Dietitians	32	32	32	32	32	32	32	32	32	32	32	32																				33	32	32	32	32	32					
Hearing aid dispensers	23	22	22	23	23	23	23	22	22	22	22	22																				18	15	18	20	22	22					
Occupational therapists	73	73	71	73	73	73	73	70	70	70	70	70																				74	73	70	69	70	70					
Operating Department Practitioners	40	40	40	40	42	42	42	37	38	38	38	38																				34	35	34	34	38	38					
Orthoptists	3	3	3	3	3	3	3	3	3	3	3	3																				3	3	3	3	3	3					
Paramedics	62	64	67	67	72	75	75	72	72	76	74	77																				50	50	49	53	77	77					
Physiotherapists	70	69	68	70	70	71	71	70	70	70	70	71																				67	65	69	69	71	71					
Practitioner psychologists	96	96	96	96	97	99	99	102	102	102	102	102																				95	91	91	93	102	102					
Prosthetists/Orthotists	3	3	3	3	3	3	3	3	3	3	3	2																				3	3	3	3	2	2					
Radiographers	52	52	52	52	52	52	50	50	50	50	50	51																				56	53	51	50	51	52					
Social workers in England	248	249	250	250	256	255	255	241	243	245	243	242																														
Speech and language therapists	35	36	36	36	36	36	36	34	34	34	34	34																					32	31	30	31	34	34				
Local anaesthesia	4	4	4	4	4	4	4	4	4	4	4	4																					2	4	4	4	4	4				
Prescription only medicine	9	9	9	9	9	9	9	9	9	8	8	8																					9	9	10	9	8	8				
Supplementary prescribing	59	59	58	59	59	59	59	59	59	59	56	53																					77	77	62	59	53	53				
Independent prescribing	89	90	90	91	93	93	93	95	95	94	94	93																														
Approved mental health professionals	33	33	36	36	36	36	36	34	34	34	34	34																														
Podiatric surgery																																										
Total approved programmes	1,051	1,054	1,057	1,063	1,084	1,089	1,089	1,052	1,055	1,063	1,056	1,055	1,056																			644	909	968	967	1,055	1,056					
Total approved education providers	150	151	151	152	153	153	153	151	151	151	150	150	150																			128	150	151	143	150	150					

Overview of approval visits April 2015 - March 2017



Overview of approval visits	2015		2016												2017						2011/12	2012/13	2013/14	2014/15	2015/16	2016/17				
	Apr	May	Jun	Jul	Aug	Sep	Oct	Nov	Dec	Jan	Feb	Mar	Apr	May	Jun	Jul	Aug	Sep	Oct	Nov	Dec	Jan	Feb	Mar	FYE	FYE	FYE	FYE	FYE	YTD
Number of visits	7	8	7	4	2	6	1	6	4	6	3	4	7												59	56	66	69	58	7
Number of programmes visited	11	16	10	5	4	7	1	9	4	13	3	5	10												112	103	170	132	88	10

Reasons for approval visits April 2015 - March 2017

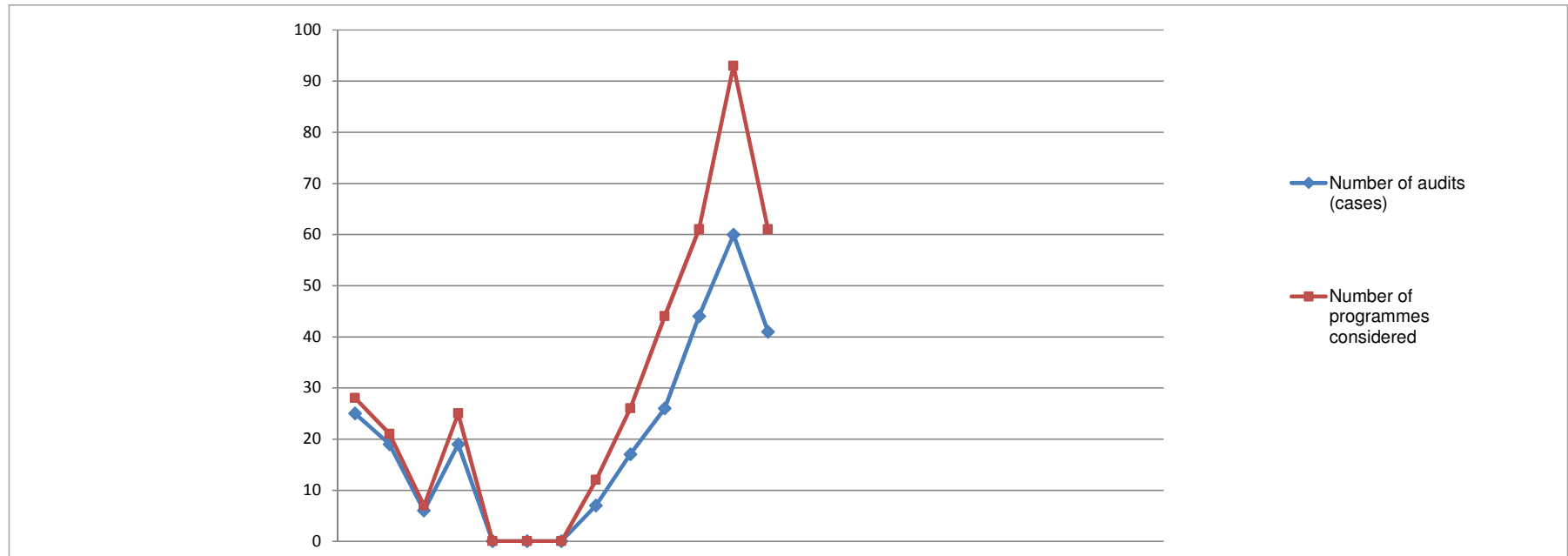


Reason for programme visited	2015			2016												2017									
	Apr	May	Jun	Jul	Aug	Sep	Oct	Nov	Dec	Jan	Feb	Mar	Apr	May	Jun	Jul	Aug	Sep	Oct	Nov	Dec	Jan	Feb	Mar	
New programme (pre-registration)	3	4	3	3	3	6	1	3	2	7	1	5	9												
New programme (post-registration)	0	0	0	0	0	0	0	0	0	1	0	0	0												
Result of a new profession joining the HCPC register*	6	10	0	0	0	0	0	0	0	0	0	1	0												
Result of a major change to an existing programme	2	2	7	2	1	1	0	6	2	5	1	0	1												
Result of annual monitoring to an existing programme	0	0	0	0	0	0	0	0	0	0	0	0	0												
Total	11	16	10	5	4	7	1	9	4	13	3	5	10												

2011/12	2012/13	2013/14	2014/15	2015/16	2016/17
FYE	FYE	FYE	FYE	FYE	YTD
17	30	29	37	41	9
2	1	1	2	1	0
34	51	125	77	17	0
57	21	15	16	29	1
2	0	0	0	0	0
112	103	170	132	88	10

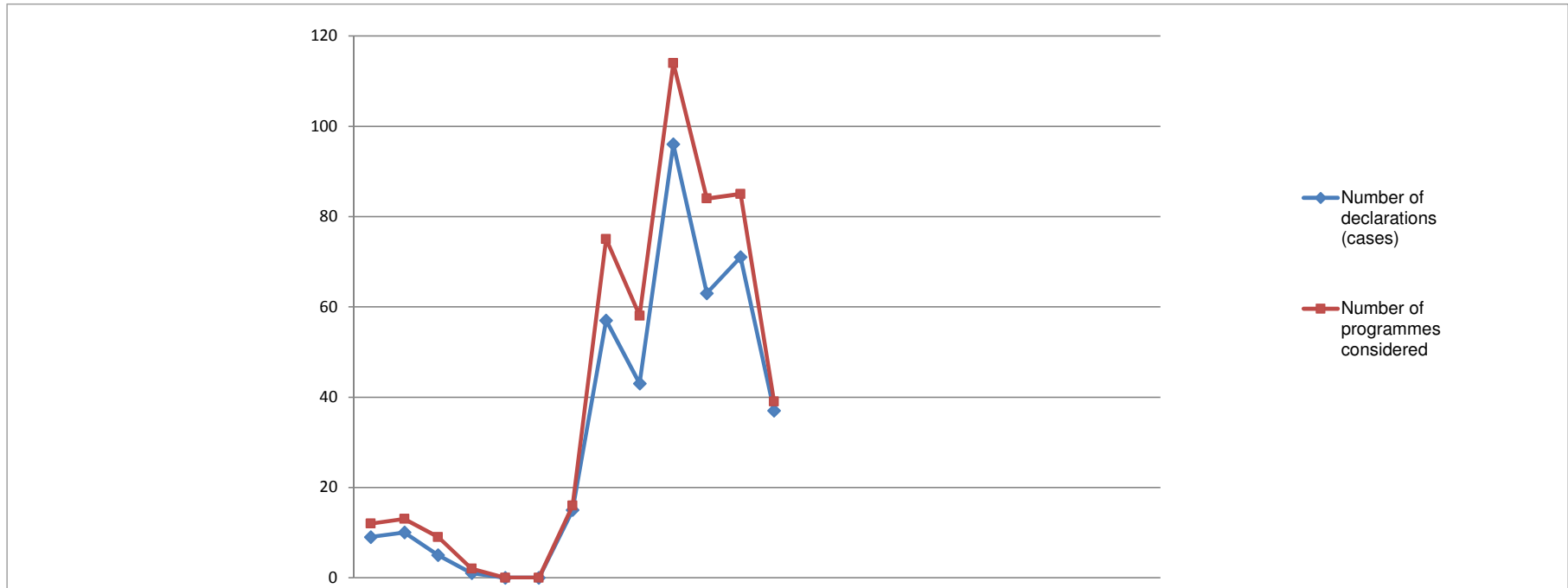
* Practitioner psychologists July 2009 - July 2012
 Hearing Aid Dispensers April 2010 - July 2012
 Social workers in England August 2012 - July 2015
 Approved mental health workers September 2013 - July 2015

Overview of annual monitoring audit submissions, April 2015 - March 2017



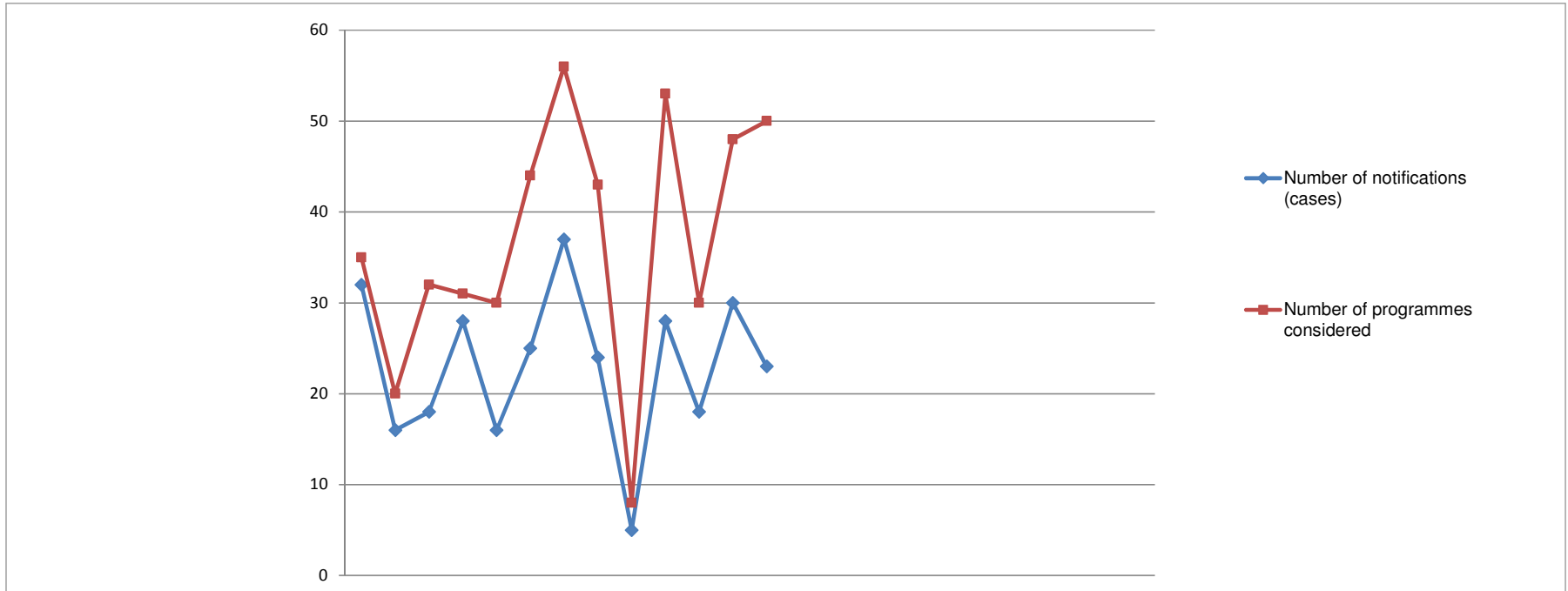
Type of submission	2015			2016									2017						2011/12	2012/13	2013/14	2014/15	2015/16	2016/17						
	Apr	May	Jun	Jul	Aug	Sep	Oct	Nov	Dec	Jan	Feb	Mar	Apr	May	Jun	Jul	Aug	Sep	Oct	Nov	Dec	Jan	Feb	Mar	FYE	FYE	FYE	FYE	FYE	YTD
Number of audits (cases)	25	19	6	19	0	0	0	7	17	26	44	60	41												163	199	222	209	223	41
Number of programmes considered	28	21	7	25	0	0	0	12	26	44	61	93	61												206	282	268	286	317	61

Overview of annual monitoring declarations, April 2015 - March 2017

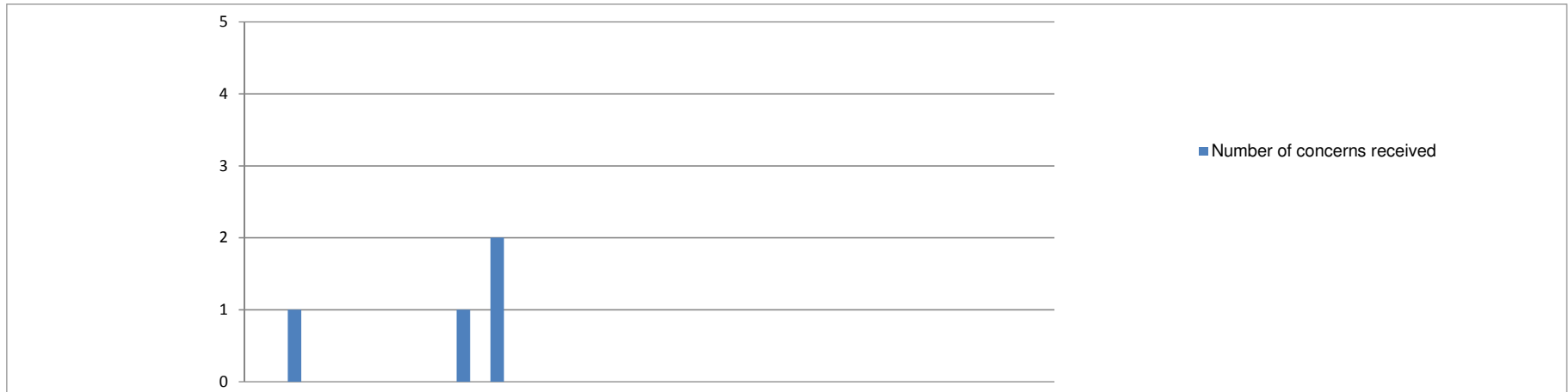


Type of submission	2015			2016												2017						2011/12	2012/13	2013/14	2014/15	2015/16	2016/17			
	Apr	May	Jun	Jul	Aug	Sep	Oct	Nov	Dec	Jan	Feb	Mar	Apr	May	Jun	Jul	Aug	Sep	Oct	Nov	Dec	Jan	Feb	Mar	FYE	FYE	FYE	FYE	FYE	YTD
Number of declarations (cases)	9	10	5	1	0	0	15	57	43	96	63	71	37												232	199	222	231	370	37
Number of programmes considered	12	13	9	2	0	0	16	75	58	114	84	85	39												249	267	297	316	468	39

Overview of major change submissions, April 2015 - March 2017



Overview of notifications	2015			2016												2017															
	Apr	May	Jun	Jul	Aug	Sep	Oct	Nov	Dec	Jan	Feb	Mar	Apr	May	Jun	Jul	Aug	Sep	Oct	Nov	Dec	Jan	Feb	Mar	2011/12 FYE	2012/13 FYE	2013/14 FYE	2014/15 FYE	2015/16 FYE	2016/17 YTD	
Number of notifications (cases)	32	16	18	28	16	25	37	24	5	28	18	30	23																		
Number of programmes considered	35	20	32	31	30	44	56	43	8	53	30	48	50																		

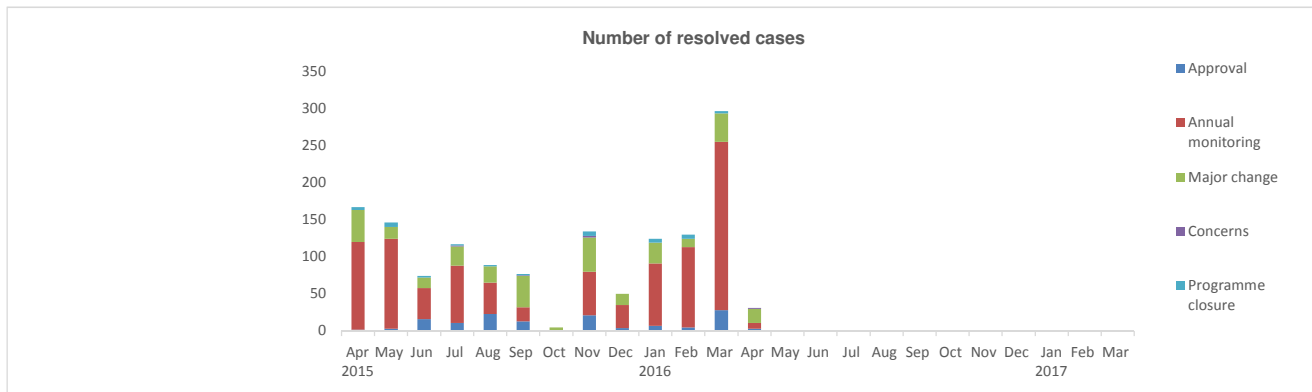
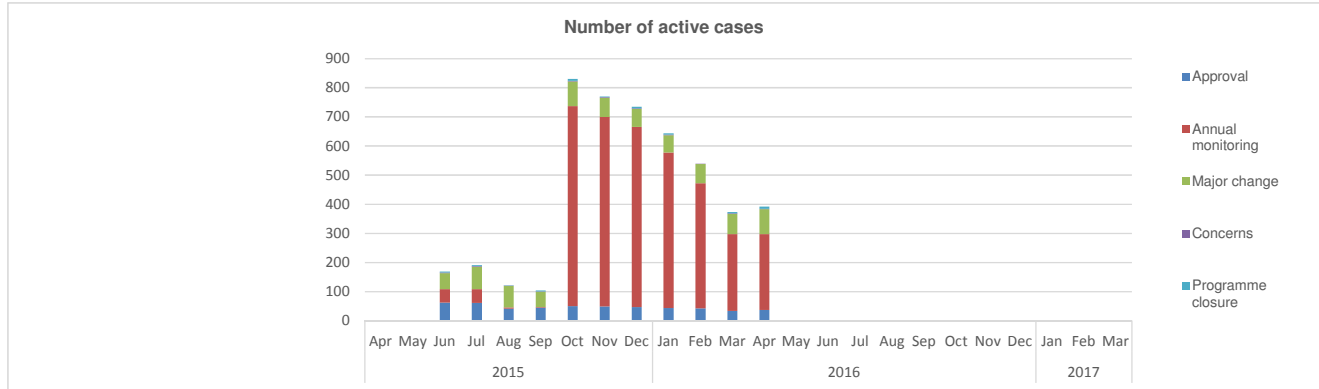


	2015			2016									2017		
	Apr	May	Jun	Jul	Aug	Sep	Oct	Nov	Dec	Jan	Feb	Mar	Apr	May	Jun
Number of concerns received	0	1	0	0	0	0	1	2	0	0	0	0	0	0	0

	2011/12 FYE	2012/13 FYE	2013/14 FYE	2014/15 FYE	2015/16 FYE	2016/17 YTD
Total number of approved progs	644	909	968	967	1,055	1,056
% programmes affected by concerns	0.8%	0.7%	0.5%	0.8%	0.4%	0.0%

Outcome of process	2015			2016									2017		
	Apr	May	Jun	Jul	Aug	Sep	Oct	Nov	Dec	Jan	Feb	Mar	Apr	May	Jun
Directed visit	0	0	0	0	0	0	0	0	0	0	0	0	0	0	0
Approval process	0	1	0	0	0	0	0	0	0	0	0	0	0	0	0
Major change process	0	0	0	0	0	0	0	0	0	0	0	0	0	0	0
Annual monitoring process	0	0	0	0	0	0	0	0	0	0	0	0	0	0	0
Withdrawn	0	0	0	0	0	0	0	0	0	0	0	0	0	0	0
Unsubstantiated	0	0	0	0	0	0	0	1	0	0	0	0	0	0	0
Pending	0	0	0	0	0	0	1	1	0	0	0	0	0	0	0

	2011/12 FYE	2012/13 FYE	2013/14 FYE	2014/15 FYE	2015/16 FYE	2016/17 YTD
Directed visit	0	0	0	1	0	0
Approval process	1	0	1	0	1	0
Major change process	1	0	0	0	0	0
Annual monitoring process	0	0	0	0	0	0
Withdrawn	0	0	0	0	0	0
Unsubstantiated	3	6	4	7	1	0
Pending	0	0	0	0	2	0



Number of active cases

Operational process	2015					2016									2017										
	Apr	May	Jun	Jul	Aug	Sep	Oct	Nov	Dec	Jan	Feb	Mar	Apr	May	Jun	Jul	Aug	Sep	Oct	Nov	Dec	Jan	Feb	Mar	
Approval			62	61	41	45	50	49	47	44	42	34	37												
Annual monitoring			46	47	5	2	687	651	619	534	430	264	261												
Major change			55	77	73	53	85	66	62	59	66	69	85												
Concerns			3	3	2	1	2	2	2	2	2	2	1												
Programme closure			3	3	1	3	7	2	5	5	0	4	8												
Total			169	191	122	104	831	770	735	644	540	373	392	0	0	0	0	0	0	0	0	0	0	0	0

* This data is unavailable for April & May 2015

2015/16	2016/17
FYE	YTD
475	37
3,285	261
665	85
21	1
33	8
4,479	392

Number of resolved cases

Operational process	2015					2016									2017										
	Apr	May	Jun	Jul	Aug	Sep	Oct	Nov	Dec	Jan	Feb	Mar	Apr	May	Jun	Jul	Aug	Sep	Oct	Nov	Dec	Jan	Feb	Mar	
Approval	2	3	16	11	23	13	0	21	4	7	5	28	3												
Annual monitoring	118	121	42	77	42	19	0	59	31	84	108	227	8												
Major change	43	16	14	26	22	42	5	46	15	28	11	38	19												
Concerns	0	0	0	1	0	1	0	2	0	0	0	0	1												
Programme closure	4	6	2	2	2	2	0	6	0	5	6	3	0												
Total	167	146	74	117	89	77	5	134	50	124	130	296	31	0	0	0	0	0	0	0	0	0	0	0	0

2015/16	2016/17
FYE	YTD
133	3
928	8
306	19
4	1
38	0
1,409	31

Number of cancelled cases

Operational process	2015					2016									2017										
	Apr	May	Jun	Jul	Aug	Sep	Oct	Nov	Dec	Jan	Feb	Mar	Apr	May	Jun	Jul	Aug	Sep	Oct	Nov	Dec	Jan	Feb	Mar	
Approval	2	1	1	4	0	3	2	4	2	3	2	4	4												
Annual monitoring	3	2	0	0	0	0	0	2	1	6	2	2	3												
Major change	5	1	4	0	0	3	2	5	0	1	1	3	3												
Concerns	0	0	0	0	1	0	0	0	0	0	0	0	0												
Programme closure	0	0	0	0	0	1	0	0	0	0	0	0	0												
Total	10	4	5	4	1	7	4	11	3	10	5	9	10	0	0	0	0	0	0	0	0	0	0	0	0

2015/16	2016/17
FYE	YTD
28	4
18	3
25	3
1	0
1	0
73	10