

## Operations Report to Finance & Resources Committee, 7<sup>th</sup> February 2008

### Contents

<u>Department</u>	<u>Page</u>
Registrations – Richard Houghton	2
Business improvement – Roy Dunn	4
Project management – Claire Phillips	5
Approvals & annual monitoring – Abigail Creighton	8

## Registrations – Richard Houghton

### Summary

This paper provides an update from the Registration Department for the period 1 October 2007 to 31 December 2007.

### 1) Operational Performance

#### a) Telephone Calls

**i) UK Telephone Calls** - During the period from 1 October 2007 to 31 December 2007 the team received a total of 32,644 telephone calls which is 17,043 more than the same period last year. 23,515 calls were answered which was 9,056 more than when compared to the same period last year. This 109% increase in the volume of telephone calls received has resulted in the department achieving a 63% increase in the number of UK telephone calls successfully answered.

**ii) International Telephone Calls** - During the period from 1 October 2007 to 31 December 2007 the team received a total of 2986 telephone calls, 94% of which were answered.

#### b) Application Processing

**i) UK Applications** - A total of 2007 new applications were received during this period and 1924 individuals were registered. Applications took on average eight working days to process which exceeds our target of ten working days.

Applications for readmission were taking an average of seven working days to process.

**ii) International Applications** - A total of 467 new international applications were received in this period and 316 individuals were registered.

#### c) Emails

**i) UK Emails** - The team received approximately 60/80 emails per day and managed to respond to these within 48 hours of receipt.

**ii) International Emails** - The team received approximately 20/30 emails per day and managed to respond to these within 48 hours of receipt.

#### d) Registration Renewal

At the start of August 28,866 occupational therapists and in September 22,588 biomedical scientists were invited to renew their registration. Due to the exceptional circumstances caused by the postal disruption to those renewing their registration, it was agreed to allow an additional 'grace period' for renewal applications to be received. Occupational therapists had until 30 November 2007 and biomedical scientists the 17 December 2007 to renew their registration. Of the number originally invited to renew registration, 8.3% of occupational therapists and 7.9% of biomedical scientists lapsed from the Register. This compares favourably with 2005 when 10.6% of occupational therapists and 8.3% of biomedical scientists were lapsed from the Register.

At the start of December 2007 24,362 radiographers were invited to renew their registration.

### 2) Employee Resource

The department is operating with the budgeted headcount with operational effectiveness improving.

During the period Marianne Lawrence was recruited as a Customer Services Manager and both Petrina Baker and Anna Lubasinska as Registration Advisors.

## Business improvement – Roy Dunn

### Human Resources

Roy Dunn has taken over as the Head of Business Improvement. One of his responsibilities will be the maintenance of the ISO 9001:2000 quality management system

### QMS review meetings

Below is a list of recent quality management system reviews:

- Communications
- Management review
- Quality

### QMS process updates

Below is a list of recent process changes on the QMS:

- International
- Quality
- Communications

### Last BSI Audit

The last BSi audit was held on 23 October 2007. The areas reviewed were:-

- Quality management
- Registrations - UK
- Policy
- HR including Partner validation
- Staff training and development

HPC passed this audit

### Next BSI Audit

The next BSI audit is scheduled for 8 April 2008. This external audit will review the following areas of the management system Registrations - International & Grandparenting and Management system organisation & review.

### Business Continuity

A power outage occurred at HPC's London office on 8 January 2008 at approximately 4:30pm. The business continuity plan was invoked. Power was resumed at approximately 5pm.

A review of this incident was conducted and as a result the following improvements are being made to the business continuity plan:-






- Standard Operating Instructions (SOPs) are to be designed and issued to all employees on action to be taken as soon as the power is disrupted
- A designated EMT business continuity meeting point has been created
- The purchase and distribution of torches for key employees

## Project management – Claire Phillips

### HPC Major Projects February FY 2007/8 Narrative

No.	Project name	Commentary
MP25	Application Server Upgrade	<ul style="list-style-type: none"><li>• Date extended since defects were found during testing. Therefore in order not to jeopardise CPD testing suspended until after CPD testing completed</li></ul>
MP26	Professional Qualifications Directive	<ul style="list-style-type: none"><li>• Phase 2 of project has not been required due to low number of applications. Therefore project has been closed</li></ul>
MP29	Clinical psychologists competent authority	<ul style="list-style-type: none"><li>• Due to legislative delays, project has now been merged with MP3</li></ul>
MP14	Online LISA authentication	<ul style="list-style-type: none"><li>• Due to legal requirements being included in the project, further technology development has now been completed, however the release date has been extended to 15<sup>th</sup> April 08 to ensure effective testing and roll out in line with overall project portfolio.</li></ul>

# HPC Major Projects 2007/8 Scorecard

No.	Prior ity	Project name	Project Description	Project Sponsor	Project Lead	Project Charter	Project Plan	Business Reqs (if IT)	07/08 Budget*	Due Date	Status
MP25	1	Application Server Upgrade	Application Server Upgrade	M Seale	R Dunn	Y	Y	NA	£30 (C)	31/10/07 31/12/07 31/03/08	
MP26	2a	Professional Qualifications Directive	Project to allow for temporary registrations, will include LISA development.	R Houghton	M Potter	Y	Y	N	£40 (C) £6.6 (O)	Phase 1 Complete Phase 2 TBD	Project complete
MP2	2b	Continuing Professional Development (CPD)	Implementation of processes to audit & track registrants' evidence of CPD.	G Ross-Sampson	R Houghton	Y	Y	Y	£85 (C) £80 (O)	30/04/09	
MP29	2b	Clinical psychologists competent authority	Assumption of competent authority powers for clinical psychologists	R Houghton	M Potter	Y	Y	Y	Nil	10/08/07 10/10/07	Project merged
MP3	2b	On-boarding of the Applied Psychologists	On-boarding of the Applied Psychologists	G Ross-Sampson	R Houghton	Y	Y	N	£132 (O)	14/12/08	
MP4	2b	On-boarding of Hearing Aid Council	Absorption of the Hearing Aid Council	G Ross-Sampson	R Houghton	N	N	N	On hold	01/04/09	On hold
MP5	2b	Equality and Diversity Project Phase 1	Revision of equality & diversity policies to ensure HPC is pro-actively eliminating discrimination	M Seale	M Guthrie	Y	Y	N	£43 (O)	31/03/08	
MP30	2c	Registration fee change 09	Realignment of registration fee charges			Y	Y	NA	-	15/06/09	

**Key:**

Green – Project is due to meet deadline

Amber – Indications are that it is probable that project will miss deadline

Red – Project has missed deadline



Status of project has improved since last reporting cycle



Status of project is static since last reporting cycle



Status of project has declined since last reporting cycle

\* All amounts in £000's

(C) = Capex

(O) = Opex

Date 2007-05-31 Ver. a Dept/Cmte OPT Doc Type AOD Title Project summary 2007-8 May

Status Draft Int. Aud. Public  
DD: None RD: None

## HPC Major Projects 2007/8 Scorecard

No.	Priority	Project name	Project Description	Project Sponsor	Project Lead	Project Charter	Project Plan	Business Reqs (if IT)	07/08 Budget*	Due Date	Status
MP24	2d	Stannery street	Refurbishment of Stannery Street building	M Seale	S Hall	N	N	N	£1.6M (C) £43 (O)	31/01/08	
MP27	3	Replacement of Finance system	Replacement of SAGE and improvement of interfaces with other existing HPC systems.	S Leicester	M Cheema	Y	Y	Y	£19 (C)	30/04/08	
MP28	3	Change of LISA access rights	Full review and implementation of revised access rights for LISA	S Leicester	M Cheema	Y	Y	Y	£35 (C)	15/04/08	
MP14	4	Online LISA authentication	Giving registrants the ability to update their personal details online	G Ross-Sampson	R Houghton	N	Y	Y	-	07/12/07 15/04/08	

**Key:**

Green – Project is due to meet deadline

Amber – Indications are that it is probable that project will miss deadline

Red – Project has missed deadline



Status of project has improved since last reporting cycle



Status of project is static since last reporting cycle



Status of project has declined since last reporting cycle

\* All amounts in £000's

(C) = Capex

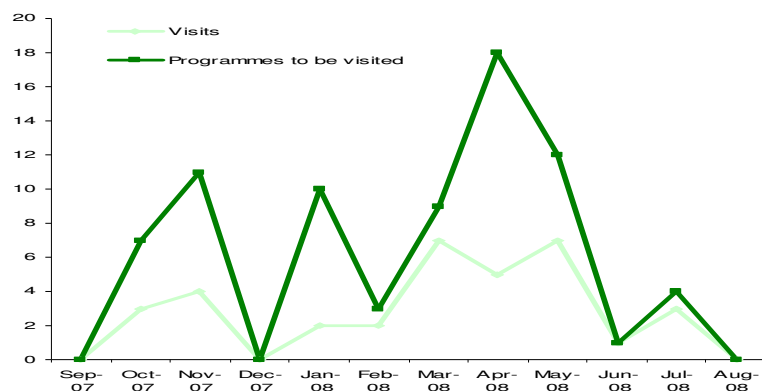
(O) = Opex

## Education – Approvals and monitoring

### Approval visits 2007/08

The department has 34 visits in the schedule for the current academic year. These 34 visits will consider 75 programmes. There are three large multi-professional visits in April 2008.

	Visits	Programmes to be visited
Sep-07	0	0
Oct-07	3	7
Nov-07	4	11
Dec-07	0	0
Jan-08	2	7
Feb-08	2	3
Mar-08	7	9
Apr-08	5	18
May-08	7	12
Jun-08	1	1
Jul-08	3	4
Aug-08	0	0



The following table details the approval visit still to take place.

Visit date	Education provider	Programme(s)	Mode of Study
20/2/2008	University of Nottingham	Masters of Nutrition (M Nutr)	Flexible
21/2/2008	University of Central Lancashire	BSc (Hons) Physiotherapy	Full Time
		BSc (Hons) Physiotherapy	Part Time
4/3/2008	University of Leeds	BSc (Hons) Radiography (Diagnostic)	Full Time
5/3/2008	University of Worcester	MA Drama Therapy	Part Time
11/3/2008	University of Wolverhampton	BSc (Hons) Applied Biomedical Science	Full Time
		BSc (Hons) Applied Biomedical Science	Part Time
11/3/2008	The University of Northampton	BSc (Hons) Podiatry	Full Time
11/3/2008	Welsh Ambulance Services NHS Trust	Paramedic Award	Full Time
18/3/2008	Open University	Foundation Degree in Health Sciences	Part Time
		Foundation Degree in Paramedic Science	Part Time
26/3/2008	East of England Ambulance NHS Trust	IHCD Paramedic Award	Part Time
8/4/2008	University of Plymouth	BSc (Hons) Occupational Therapy	Full Time
		BSc (Hons) Podiatry	Full Time
		BSc (Hons) Physiotherapy	Full Time
9/4/2008	University of Liverpool	BSc (Hons) Radiotherapy	Full Time
		BSc (Hons) Occupational Therapy	Full Time



		BSc (Hons) Orthoptics	Full Time
		BSc (Hons) Physiotherapy	Full Time
		BSc (Hons) Diagnostic Radiography	Full Time
15/4/2008	Coventry University	BSc (Hons) Dietetics	Full Time
		BSc (Hons) Occupational Therapy	Full Time
		BSc (Hons) Occupational Therapy	Part Time
		BSc (Hons) Occupational Therapy	Part Time (In Service)
		BSc (Hons) Physiotherapy	Full Time
		Foundation Degree in Paramedic Science	Full Time
		Diploma Professional Development in Paramedic Practice	Full Time
		Diploma of Higher Education Operating Department Practice	Full Time
16/4/2008	St George's, University of London	BSc (Hons) Diagnostic Radiography	Full Time
16/4/2008	Swansea University	Dip HE Paramedic Science	Full Time
7/5/2008	Yorkshire Ambulance Service	Paramedic Programme	Full Time
		Paramedic Programme	Part Time
7/5/2008	University of Portsmouth	BSc (Hons) Applied Biomedical Science	Part Time
13/5/2008	South Western Ambulance NHS Trust	IHCD - Paramedic Programme	Full Time
13/5/2008	The University of Northampton	BSc (Hons) Occupational Therapy	Full Time
		BSc (Hons) Occupational Therapy	Part Time
21/5/2008	University of Bradford	BSc (Hons) Applied Biomedical Science	Full Time
		BSc (Hons) Applied Biomedical Science	Part Time
27/5/2008	Manchester	FdSc Paramedic Science	Part Time

	Metropolitan University		
		FdSc Paramedic Science	Full Time
28/5/2008	University of Huddersfield	BSc (Hons) Physiotherapy	Full Time
		Pg Dip Physiotherapy	Full Time
4/6/2008	Middlesex University	Biomedical Science (Clinical Laboratory Practice)	Full Time
1/7/2008	University of Central Lancashire	Foundation Degree Paramedic Science	Full Time
2/7/2008	London Ambulance Service NHS Trust	Paramedic Award	Block Release
		Paramedic Award	Full Time
		Paramedic Award	Part Time

### Annual Monitoring 2007/08

The department has begun receiving annual monitoring submissions for the current academic year. The submission dates are at the end of each month. To date, 88% of expected audit submissions and 96% of expected declaration forms have been received. The three late forms have been chased up. The received audit submissions will be considered by visitors in February 2008.

	Audit submissions	
	Expected	Actual
Dec-07	17	15
Jan-08	15	1
Feb-08	29	1
Mar-08	31	0
Apr-08	15	0
May-08	1	0
Jun-08	1	0
Jul-08	0	0
Aug-08	0	0

Declaration forms	
Expected	Actual
24	23
41	12
26	1
25	3
9	2
0	0
1	0
8	1
1	0

### Minor and Major Changes

The Department has received minor/major change submissions for 34 programmes in the current academic year. 62% of these submissions have been concluded. On average it is taking three months to consider each submission. This is in line with our guidance to education providers.

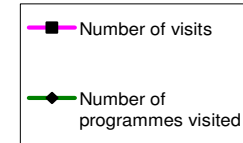
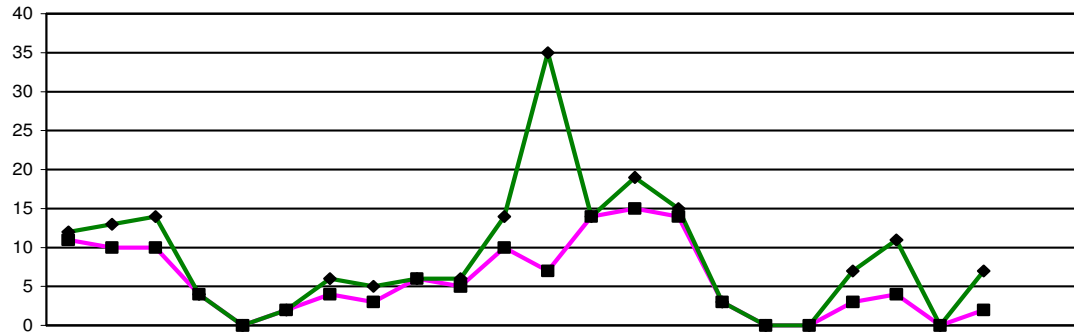
	Minor/major change submissions	
	Received	Concluded*
Sep-07	13	13
Oct-07	7	7
Nov-07	4	1
Dec-07	4	0
Jan-08	6	0

(\* includes those due to be considered at an Education and Training Panel in early Feb 08)

### Employees

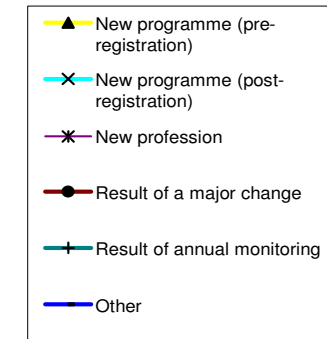
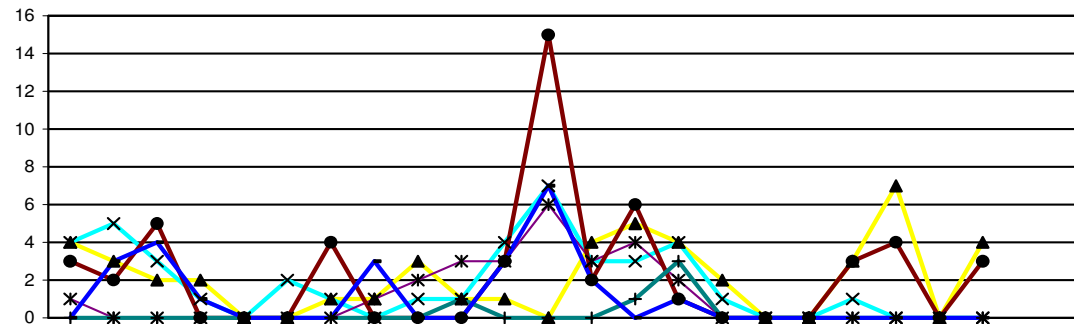
A temporary Team Administrator, Ruth Wood, joined the department in mid November 2007 to cover a period of maternity leave. Two new Education Officers, Elisa Simeoni and Paula Lescott, joined the Department in January 2008. This means that all Education Officers positions are now full.

Interviews for a replacement Education Administrator are due to take place in late January 2008.



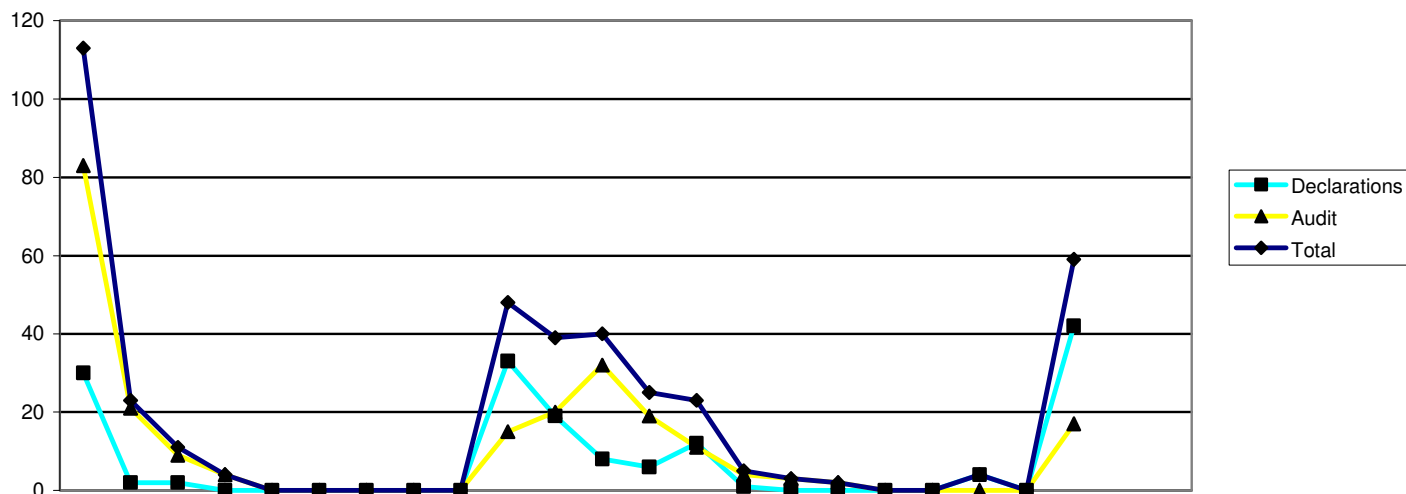
	2006			2007										2008										
	Apr	May	Jun	Jul	Aug	Sep	Oct	Nov	Dec	Jan	Feb	Mar	Apr	May	Jun	Jul	Aug	Sep	Oct	Nov	Dec	Jan	Feb	Mar
<b>Overview of approvals</b>																								
Number of visits	11	10	10	4	0	2	4	3	6	5	10	7	14	15	14	3	0	0	3	4	0	2		
Number of programmes visited	12	13	14	4	0	2	6	5	6	6	14	35	14	19	15	3	0	0	7	11	0	7		

2004/5	2005/6	2006/7	2007/8
FYE	FYE	FYE	YTD
0	0	101	55
22	27	117	76



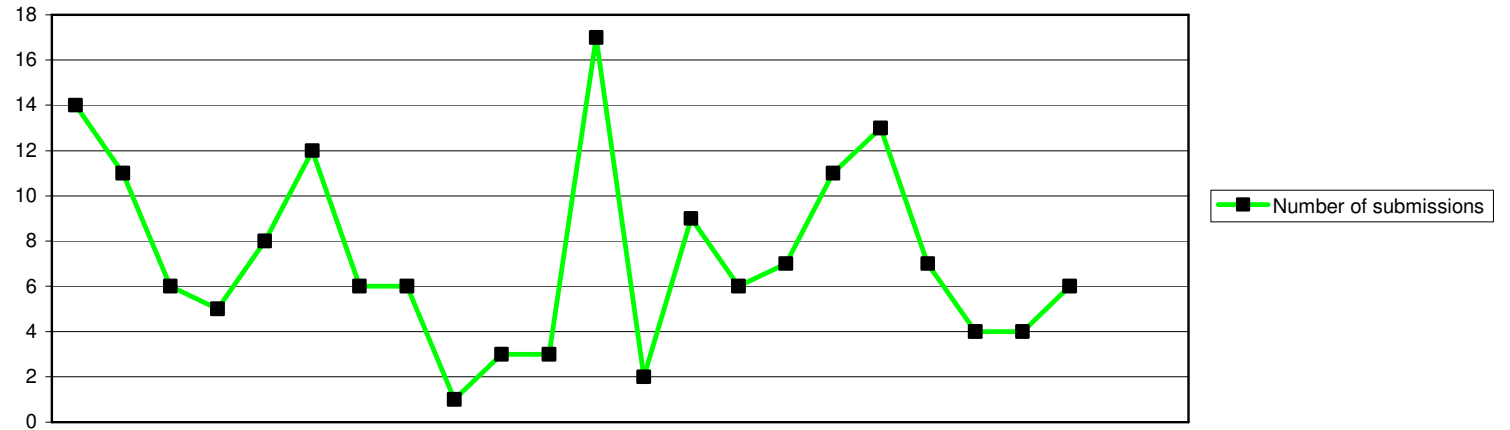
	2006			2007										2008										
	Apr	May	Jun	Jul	Aug	Sep	Oct	Nov	Dec	Jan	Feb	Mar	Apr	May	Jun	Jul	Aug	Sep	Oct	Nov	Dec	Jan	Feb	Mar
<b>Reason for programme visited</b>																								
New programme (pre-registration)	4	3	2	2	0	0	1	1	3	1	1	0	4	5	4	2	0	0	3	7	0	4		
New programme (post-registration)	4	5	3	1	0	2	1	0	1	1	4	7	3	3	4	1	0	0	1	0	0	0		
New profession	1	0	0	0	0	0	0	1	2	3	3	6	3	4	2	0	0	0	0	0	0	0		
Result of a major change	3	2	5	0	0	0	4	0	0	0	3	15	2	6	1	0	0	0	3	4	0	3		
Result of annual monitoring	0	0	0	0	0	0	0	0	0	1	0	0	0	1	3	0	0	0	0	0	0	0		
Other	0	3	4	1	0	0	0	3	0	0	3	7	2	0	1	0	0	0	0	0	0	0		
<b>Total</b>	12	13	14	4	0	2	6	5	6	6	14	35	14	19	15	3	0	0	7	11	0	7		

2004/5	2005/6	2006/7	2007/8
FYE	FYE	FYE	YTD
0	0	18	29
0	5	29	12
0	5	16	9
0	5	32	19
0	5	1	4
0	5	21	3
0	25	117	76

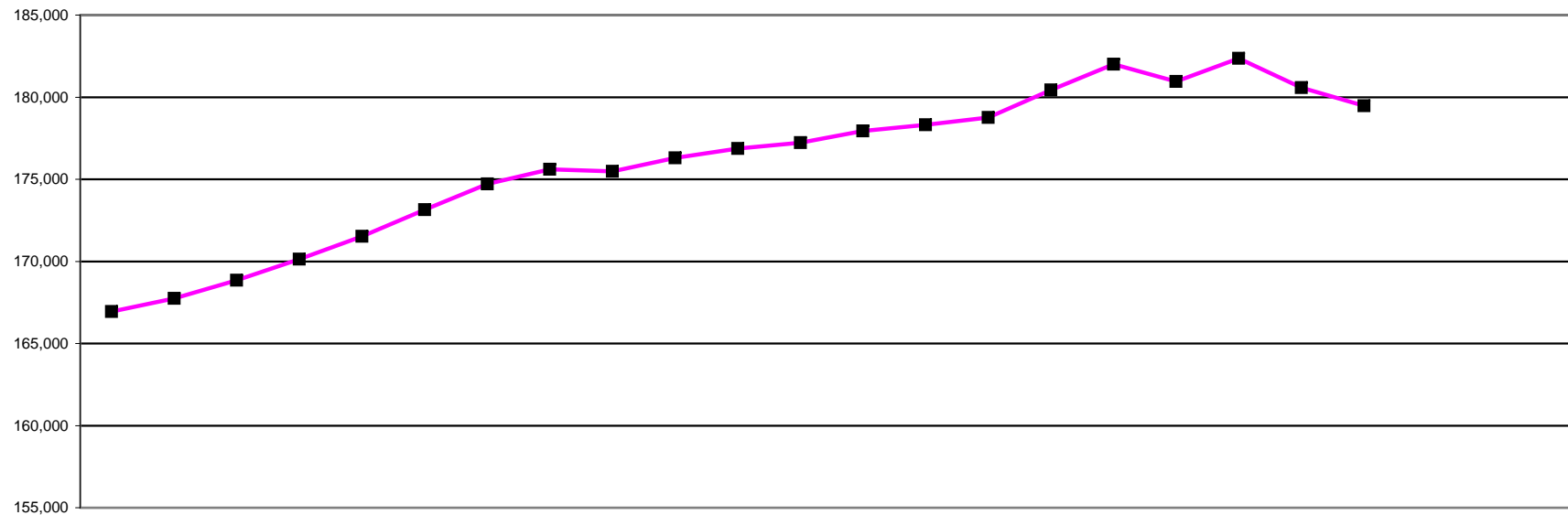


	2006			2007									2008											
	Apr	May	Jun	Jul	Aug	Sep	Oct	Nov	Dec	Jan	Feb	Mar	Apr	May	Jun	Jul	Aug	Sep	Oct	Nov	Dec	Jan	Feb	Mar
<b>Annual monitoring submissions</b>																								
<b>Declarations</b>	30	2	2	0	0	0	0	0	0	33	19	8	6	12	1	0	0	0	0	4	0	42		
<b>Audit</b>	83	21	9	4	0	0	0	0	0	15	20	32	19	11	4	3	2	0	0	0	0	17		
<b>Total</b>	113	23	11	4	0	0	0	0	0	48	39	40	25	23	5	3	2	0	0	4	0	59		

2004/5	2005/6	2006/7	2007/8
FYE	FYE	FYE	YTD
0	113	94	65
0	51	184	56
0	164	278	121



	2006			2007									2008			2004/5	2005/6	2006/7	2007/8									
	Apr	May	Jun	Jul	Aug	Sep	Oct	Nov	Dec	Jan	Feb	Mar	Apr	May	Jun	Jul	Aug	Sep	Oct	Nov	Dec	Jan	Feb	Mar	FYE	FYE	FYE	YTD
Minor/major change submissions																												
Number of submissions	14	11	6	5	8	12	6	6	1	3	3	17	2	9	6	7	11	13	7	4	4	4	6	0	113	92	69	

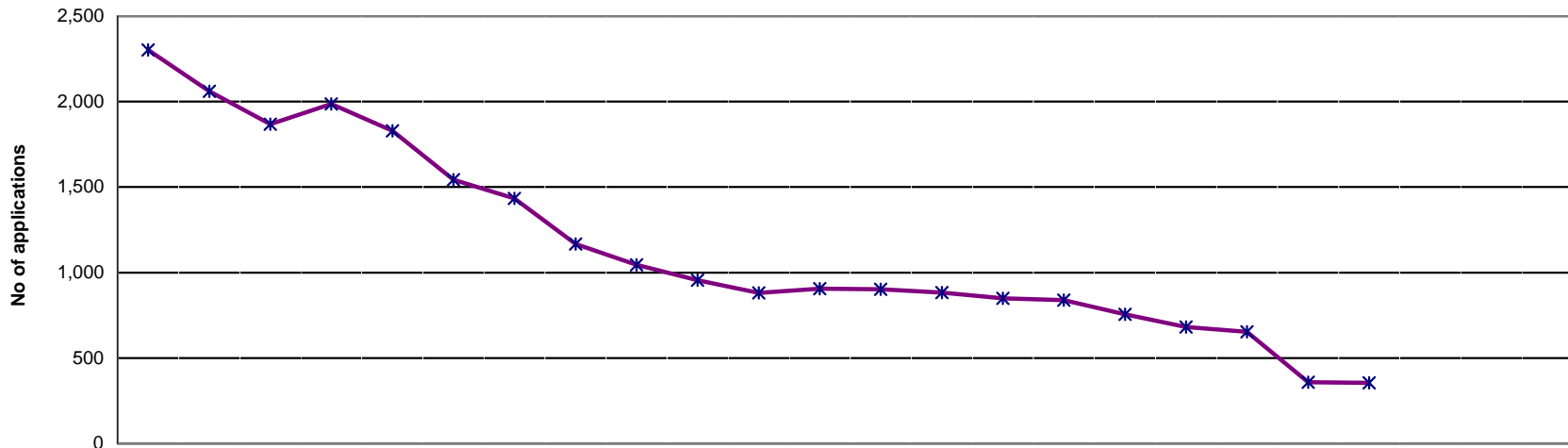


	2006												2007												2008												2004/5 FYE	2005/6 FYE	2006/7 FYE	2007/8 YTD
	Apr	May	Jun	Jul	Aug	Sep	Oct	Nov	Dec	Jan	Feb	Mar	Apr	May	Jun	Jul	Aug	Sep	Oct	Nov	Dec	Jan	Feb	Mar	Apr	May	Jun	Jul	Aug	Sep	Oct	Nov	Dec	Jan	Feb	Mar				
AS	2,334	2,336	2,120	2,139	2,185	2,205	2,255	2,269	2,282	2,302	2,323	2,332	2,369	2,387	2,401	2,416	2,426	2,442	2,464	2,400	2,487	1,992	2,309	2,332	2,487															
BS	21,516	21,582	21,733	21,775	21,930	22,029	22,119	22,211	22,293	22,392	22,470	22,510	22,588	22,646	22,698	22,777	22,847	22,696	22,680	22,665	20,992	21,158	21,322	22,510	20,992															
CH	12,830	12,824	12,851	12,894	12,201	12,407	12,564	12,612	12,633	12,645	12,653	12,657	12,683	12,692	12,703	12,822	12,946	12,999	13,041	13,065	13,068	10,741	12,799	12,657	13,068															
CS	4,031	4,052	4,088	4,090	4,121	4,141	4,159	4,182	4,193	4,209	4,227	4,241	4,283	4,297	4,304	4,291	4,288	3,958	4,061	4,109	4,121	3,719	3,999	4,241	4,121															
DT	6,234	6,225	5,808	5,938	6,050	6,091	6,144	6,173	6,194	6,224	6,246	6,267	6,297	6,318	6,363	6,458	6,541	6,592	6,636	6,658	6,661	5,757	6,260	6,267	6,661															
OT	27,004	27,056	27,265	27,432	27,855	28,119	28,344	28,509	28,576	28,637	28,701	28,756	28,866	28,903	28,970	29,169	29,437	29,394	29,581	27,267	27,583	26,376	26,855	28,756	27,583															
ODP	8,580	8,611	8,662	8,673	8,611	8,831	9,038	9,079	8,506	8,702	8,771	8,801	8,841	8,874	8,892	8,931	8,967	9,175	9,274	9,331	9,353	7,670	8,538	8,801	9,353															
OR	1,236	1,238	1,249	1,259	1,274	1,282	1,285	1,287	1,286	1,289	1,291	1,291	1,287	1,287	1,265	1,272	1,198	1,225	1,237	1,242	1,237	1,277	1,234	1,291	1,237															
PA	12,445	12,496	12,578	12,617	12,724	12,804	12,870	12,948	13,011	13,104	13,146	13,183	13,242	13,234	13,256	13,296	13,360	12,923	13,203	13,339	13,389	11,316	12,343	13,183	13,389															
PH	36,743	37,221	37,947	38,398	39,161	39,558	39,902	40,107	40,196	40,352	40,514	40,587	40,766	40,897	40,991	41,621	42,238	42,533	42,755	42,945	43,017	36,978	40,005	40,587	43,017															
PO	824	825	825	823	823	825	842	850	852	853	852	855	858	857	857	852	851	755	798	818	825	821	816	855	825															
RA	22,399	22,490	22,886	23,207	23,537	23,709	23,893	24,019	24,077	24,164	24,226	24,278	24,362	24,406	24,522	24,986	25,275	25,411	25,534	25,548	25,523	22,360	22,164	24,278	25,523															
SL	10,768	10,781	10,846	10,889	11,052	11,137	11,294	11,363	11,380	11,422	11,455	11,472	11,497	11,513	11,538	11,550	11,631	10,842	11,101	11,191	11,225	10,348	10,725	11,472	11,225															
<b>Total</b>	<b>166,944</b>	<b>167,737</b>	<b>168,858</b>	<b>170,134</b>	<b>171,524</b>	<b>173,138</b>	<b>174,709</b>	<b>175,609</b>	<b>175,479</b>	<b>176,295</b>	<b>176,875</b>	<b>177,230</b>	<b>177,939</b>	<b>178,311</b>	<b>178,760</b>	<b>180,441</b>	<b>182,005</b>	<b>180,945</b>	<b>182,365</b>	<b>180,578</b>	<b>179,481</b>	<b>160,513</b>	<b>169,369</b>	<b>177,230</b>	<b>179,481</b>															

NOTE: Information captured last day of each calendar month

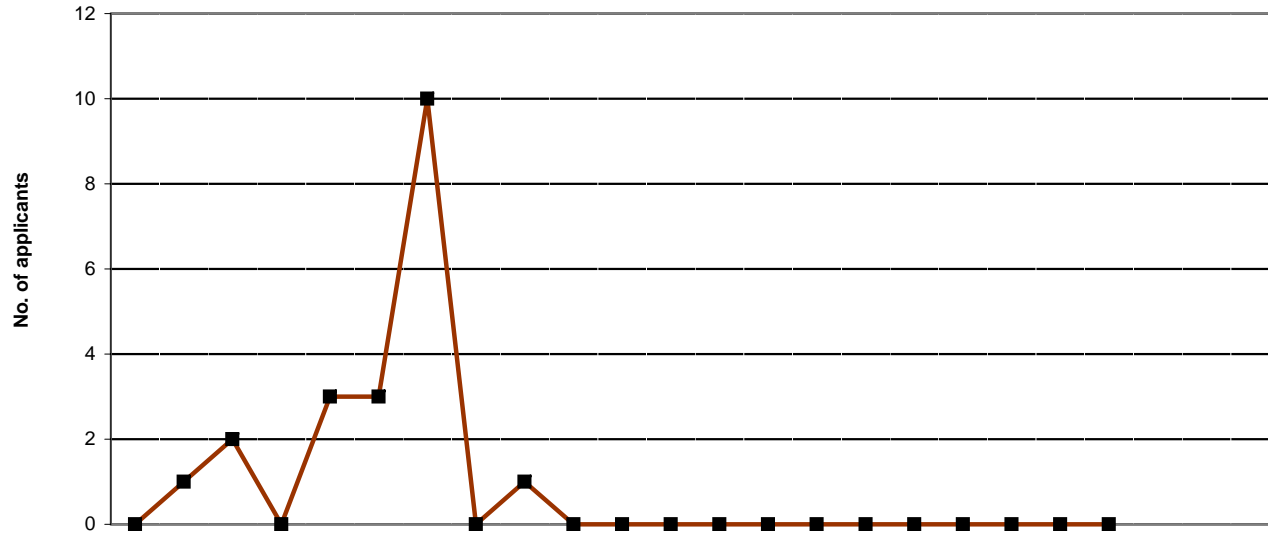
Health Professions Council International & Grandparenting Application Status April 2006 - March 2008

International Registration Department



	2006												2007												2008												2004/5 FYE	2005/6 FYE	2006/7 FYE	2007/8 YTD
	Apr	May	Jun	Jul	Aug	Sep	Oct	Nov	Dec	Jan	Feb	Mar	Apr	May	Jun	Jul	Aug	Sep	Oct	Nov	Dec	Jan	Feb	Mar	Apr	May	Jun	Jul	Aug	Sep	Oct	Nov	Dec	Jan	Feb	Mar				
Minimum Info	979	840	669	768	585	304	26	19	23	4	17	0	0	11	2	0	2	0	4	0	5	979	719	0	5															
At assessment	905	879	886	867	947	887	963	782	675	699	632	674	660	684	617	622	588	543	540	220	201	722	1,084	674	201															
Pending Reg Fee	419	341	313	351	297	352	445	366	347	253	232	231	242	188	231	216	166	139	110	139	148	364	475	231	148															
<b>Total</b>	<b>2,303</b>	<b>2,060</b>	<b>1,868</b>	<b>1,986</b>	<b>1,829</b>	<b>1,543</b>	<b>1,434</b>	<b>1,167</b>	<b>1,045</b>	<b>956</b>	<b>881</b>	<b>905</b>	<b>902</b>	<b>883</b>	<b>850</b>	<b>838</b>	<b>756</b>	<b>682</b>	<b>654</b>	<b>359</b>	<b>354</b>	<b>2,065</b>	<b>2,278</b>	<b>905</b>	<b>354</b>															

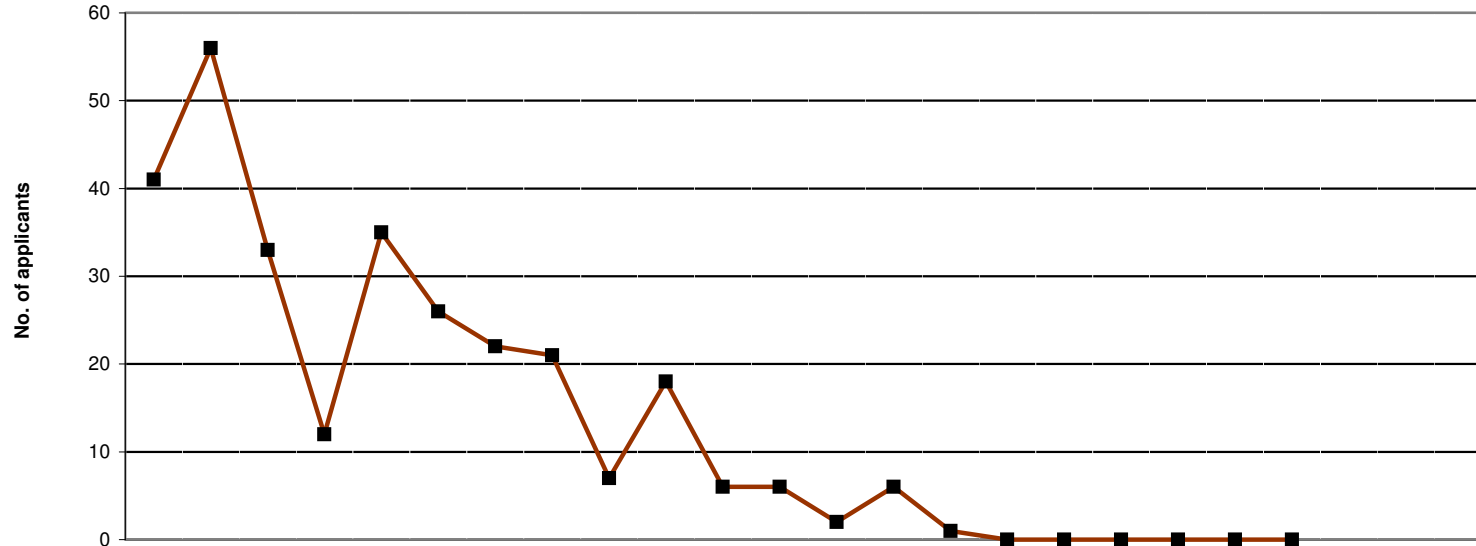
NOTE: Information covers international and grandparenting applications status progress only  
 Represents the current workload within the International & Grandparenting Department as at the end of the month



	2006			2007									2008											
	Apr	May	Jun	Jul	Aug	Sep	Oct	Nov	Dec	Jan	Feb	Mar	Apr	May	Jun	Jul	Aug	Sep	Oct	Nov	Dec	Jan	Feb	Mar
Arts Therapists	0	0	0	0	0	0	0	0	0	0	0	0	0	0	0	0	0	0	0	0	0	0	0	0
Bio. Scientists	0	0	0	0	0	0	0	0	0	0	0	0	0	0	0	0	0	0	0	0	0	0	0	0
CI Scientists	0	0	0	0	0	0	0	0	0	0	0	0	0	0	0	0	0	0	0	0	0	0	0	0
Chirops/ Pods	0	0	0	0	1	1	0	0	0	0	0	0	0	0	0	0	0	0	0	0	0	0	0	0
Dietitians	0	0	0	0	0	0	0	0	0	0	0	0	0	0	0	0	0	0	0	0	0	0	0	0
OTs	0	0	0	0	0	0	0	0	0	0	0	0	0	0	0	0	0	0	0	0	0	0	0	0
ODPs	0	1	2	0	2	2	10	0	1	0	0	0	0	0	0	0	0	0	0	0	0	0	0	0
Orthoptists	0	0	0	0	0	0	0	0	0	0	0	0	0	0	0	0	0	0	0	0	0	0	0	0
Paramedics	0	0	0	0	0	0	0	0	0	0	0	0	0	0	0	0	0	0	0	0	0	0	0	0
Physiotherapists	0	0	0	0	0	0	0	0	0	0	0	0	0	0	0	0	0	0	0	0	0	0	0	0
Prosth/Orthotists	0	0	0	0	0	0	0	0	0	0	0	0	0	0	0	0	0	0	0	0	0	0	0	0
Radiographers	0	0	0	0	0	0	0	0	0	0	0	0	0	0	0	0	0	0	0	0	0	0	0	0
SLTs	0	0	0	0	0	0	0	0	0	0	0	0	0	0	0	0	0	0	0	0	0	0	0	0
<b>TOTAL</b>	<b>0</b>	<b>1</b>	<b>2</b>	<b>0</b>	<b>3</b>	<b>3</b>	<b>10</b>	<b>0</b>	<b>1</b>	<b>0</b>	<b>0</b>	<b>0</b>	<b>0</b>	<b>0</b>	<b>0</b>	<b>0</b>	<b>0</b>	<b>0</b>	<b>0</b>	<b>0</b>	<b>0</b>	<b>0</b>	<b>0</b>	<b>0</b>

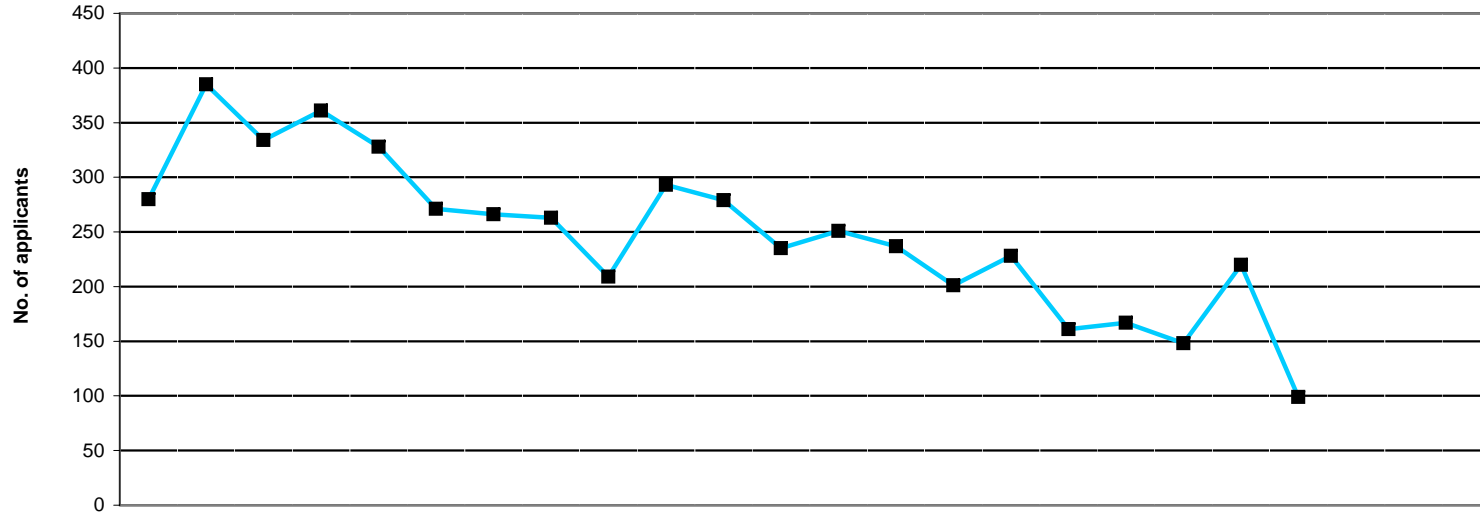
2004/5 FYE	2005/6 FYE	2006/7 FYE	2007/8 YTD
28	40	0	0
172	173	0	0
211	360	0	0
1,993	1,466	2	0
1	1	0	0
4	12	0	0
4	8	18	0
0	3	0	0
41	139	0	0
164	258	0	0
1	0	0	0
5	7	0	0
94	12	0	0
<b>2,718</b>	<b>2,479</b>	<b>20</b>	<b>0</b>



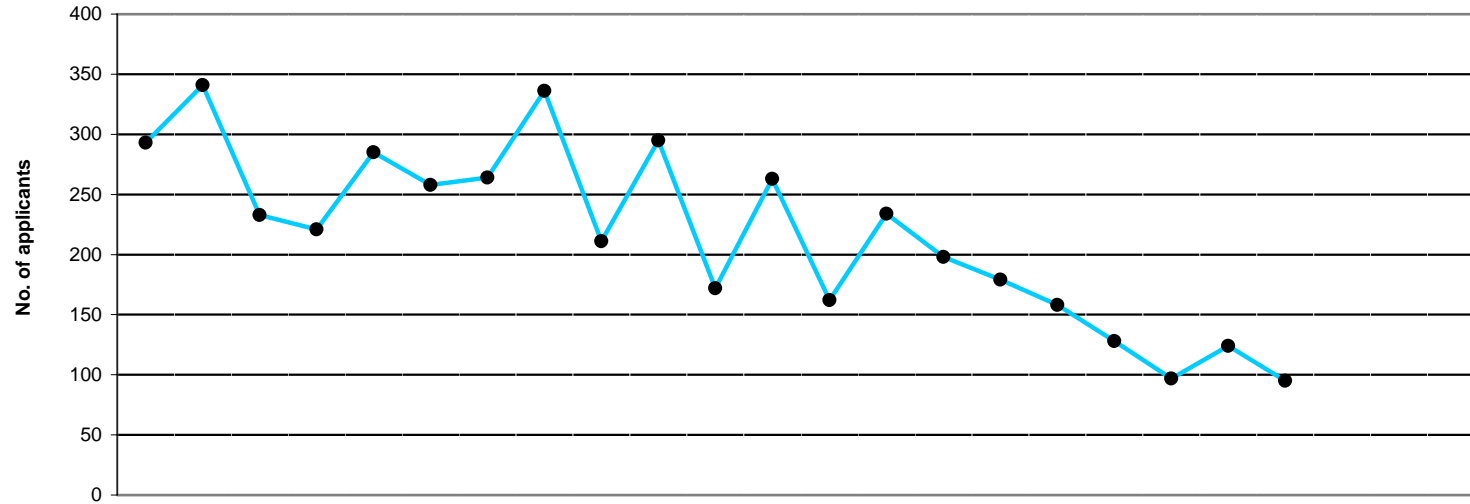


	2006												2007												2008											
	Apr	May	Jun	Jul	Aug	Sep	Oct	Nov	Dec	Jan	Feb	Mar	Apr	May	Jun	Jul	Aug	Sep	Oct	Nov	Dec	Jan	Feb	Mar	Apr	May	Jun	Jul	Aug	Sep	Oct	Nov	Dec	Jan	Feb	Mar
Arts Therapists	1	1	0	1	1	0	0	0	0	1	0	0	0	0	0	0	0	0	0	0	0	0	0	0	0	0	0	0	0	0	0	0	0	0	0	
Bio. Scientists	4	3	3	1	1	2	1	1	0	1	1	0	2	0	0	0	0	0	0	0	0	0	0	0	0	0	0	0	0	0	0	0	0	0	0	
CI Scientists	10	22	10	2	9	7	6	3	2	4	1	2	0	2	0	0	0	0	0	0	0	0	0	0	2	0	0	0	0	0	0	0	0	0	0	
Chirops/ Pods	16	19	15	4	16	12	12	5	1	4	4	3	0	1	0	0	0	0	0	0	0	0	0	0	1	0	0	0	0	0	0	0	0	0	0	
Dietitians	0	0	0	0	0	0	0	0	0	0	0	0	0	0	0	0	0	0	0	0	0	0	0	0	0	0	0	0	0	0	0	0	0	0	0	
OTs	0	0	0	0	0	0	0	0	0	0	0	0	0	0	0	0	0	0	0	0	0	0	0	0	0	0	0	0	0	0	0	0	0	0	0	
ODPs	1	0	0	0	2	1	1	9	1	3	0	0	0	0	0	0	0	0	0	0	0	0	0	0	0	0	0	0	0	0	0	0	0	0	0	
Orthoptists	0	0	0	0	0	0	0	0	0	0	0	0	0	0	0	0	0	0	0	0	0	0	0	0	0	0	0	0	0	0	0	0	0	0	0	
Paramedics	5	4	1	1	3	2	0	2	1	1	0	0	0	1	1	0	0	0	0	0	0	0	0	0	1	1	0	0	0	0	0	0	0	0	0	
Physiotherapists	4	7	4	3	3	2	2	1	2	4	0	1	0	2	0	0	0	0	0	0	0	0	0	0	2	0	0	0	0	0	0	0	0	0	0	
Prosth/Orthotists	0	0	0	0	0	0	0	0	0	0	0	0	0	0	0	0	0	0	0	0	0	0	0	0	0	0	0	0	0	0	0	0	0	0	0	
Radiographers	0	0	0	0	0	0	0	0	0	0	0	0	0	0	0	0	0	0	0	0	0	0	0	0	0	0	0	0	0	0	0	0	0	0	0	
SLTs	0	0	0	0	0	0	0	0	0	0	0	0	0	0	0	0	0	0	0	0	0	0	0	0	0	0	0	0	0	0	0	0	0	0	0	
<b>TOTAL</b>	<b>41</b>	<b>56</b>	<b>33</b>	<b>12</b>	<b>35</b>	<b>26</b>	<b>22</b>	<b>21</b>	<b>7</b>	<b>18</b>	<b>6</b>	<b>6</b>	<b>2</b>	<b>6</b>	<b>1</b>	<b>0</b>	<b>0</b>	<b>0</b>	<b>0</b>	<b>0</b>	<b>0</b>	<b>0</b>	<b>0</b>	<b>2</b>	<b>6</b>	<b>1</b>	<b>0</b>	<b>0</b>	<b>0</b>	<b>0</b>	<b>0</b>	<b>0</b>	<b>0</b>	<b>0</b>	<b>0</b>	

2004/5 FYE	2005/6 FYE	2006/7 FYE	2007/8 YTD
13	35	5	0
106	148	18	2
165	318	78	2
1,309	1,476	111	1
0	1	0	0
1	3	0	0
6	10	18	0
0	0	0	0
33	115	20	2
67	178	33	2
1	1	0	0
0	1	0	0
99	9	0	0
<b>1,800</b>	<b>2,295</b>	<b>283</b>	<b>9</b>

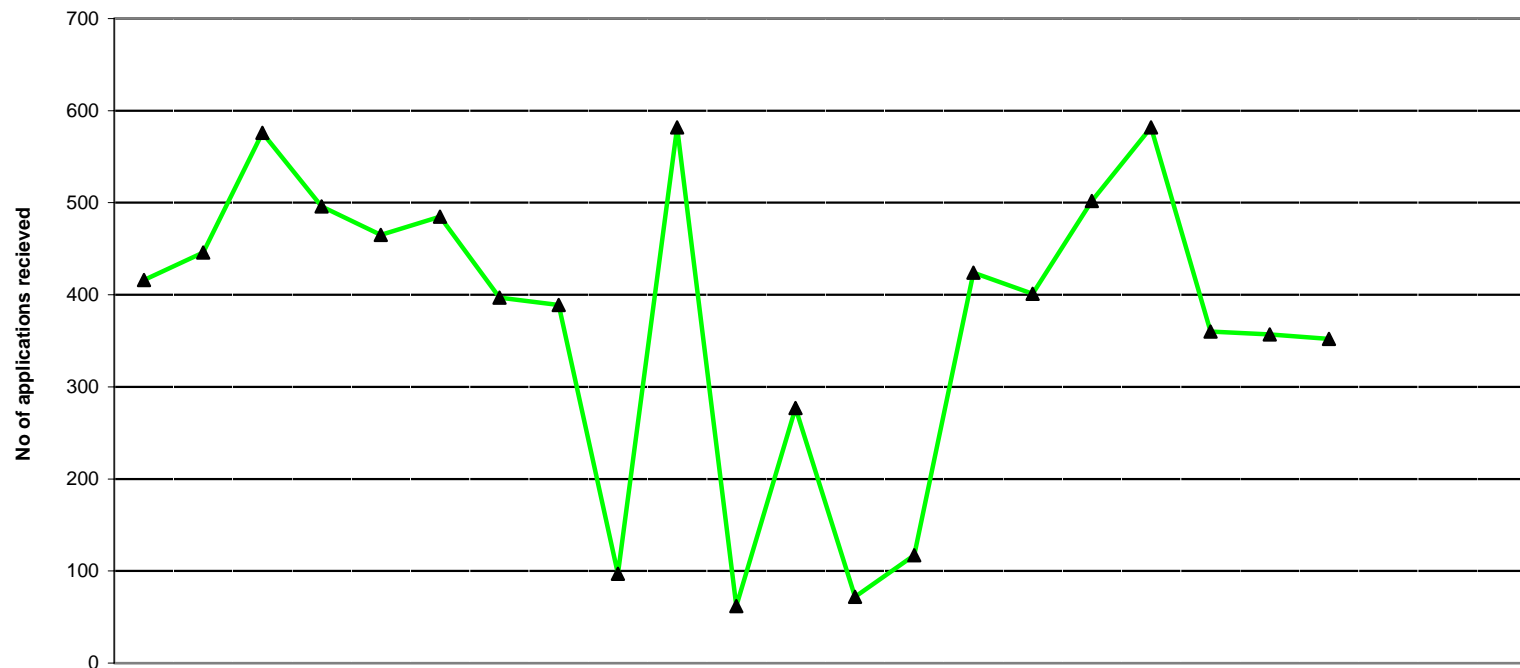


	2006												2007												2008												2004/5	2005/6	2006/7	2007/8
	Apr	May	Jun	Jul	Aug	Sep	Oct	Nov	Dec	Jan	Feb	Mar	Apr	May	Jun	Jul	Aug	Sep	Oct	Nov	Dec	Jan	Feb	Mar	Apr	May	Jun	Jul	Aug	Sep	Oct	Nov	Dec	Jan	Feb	Mar	FYE	FYE	FYE	YTD
Arts Therapists	1	1	0	2	3	2	1	1	1	1	0	2	1	1	0	3	0	2	1	1	2	15	14	15	11															
Bio. Scientists	43	52	44	53	51	42	42	39	32	39	37	22	35	38	31	32	30	23	19	27	11	710	756	496	246															
CI Scientists	8	8	8	9	4	6	4	4	2	2	1	6	5	5	2	4	4	5	3	6	8	70	65	62	42															
Chirops/ Pods	6	4	3	4	3	5	7	1	2	2	5	9	3	4	4	4	2	2	3	8	1	89	40	51	31															
Dietitians	19	19	13	7	12	13	9	12	10	17	10	8	11	14	9	12	7	7	7	12	5	238	192	149	84															
OTs	38	48	50	51	51	32	39	31	28	41	30	25	31	33	33	30	17	30	28	2	1	775	774	464	205															
ODPs	0	3	2	2	3	2	3	0	4	5	0	1	3	0	1	0	1	0	0	0	1	8	29	25	6															
Orthoptists	0	0	0	1	0	0	0	0	2	2	1	1	0	1	1	0	0	0	0	34	18	2	5	7	54															
Paramedics	4	4	1	2	4	3	2	0	5	6	6	2	7	2	1	0	4	1	0	3	0	29	17	39	18															
Physiotherapists	78	124	123	105	112	79	65	95	69	92	101	88	87	78	61	75	54	63	54	70	38	2,069	1,665	1,131	580															
Prosth/Orthotists	0	0	0	1	2	1	1	1	1	1	0	1	0	0	0	1	1	3	0	0	0	11	10	9	5															
Radiographers	73	98	77	123	68	73	83	63	40	66	78	61	51	49	40	57	34	21	29	45	5	962	810	903	331															
SLTs	10	24	13	1	15	13	10	16	13	19	10	9	17	12	18	10	7	10	4	12	9	257	249	153	99															
<b>TOTAL</b>	<b>280</b>	<b>385</b>	<b>334</b>	<b>361</b>	<b>328</b>	<b>271</b>	<b>266</b>	<b>263</b>	<b>209</b>	<b>293</b>	<b>279</b>	<b>235</b>	<b>251</b>	<b>237</b>	<b>201</b>	<b>228</b>	<b>161</b>	<b>167</b>	<b>148</b>	<b>220</b>	<b>99</b>	<b>5,235</b>	<b>4,626</b>	<b>3,504</b>	<b>1,712</b>															



	2006												2007												2008											
	Apr	May	Jun	Jul	Aug	Sep	Oct	Nov	Dec	Jan	Feb	Mar	Apr	May	Jun	Jul	Aug	Sep	Oct	Nov	Dec	Jan	Feb	Mar	Apr	May	Jun	Jul	Aug	Sep	Oct	Nov	Dec	Jan	Feb	Mar
Arts Therapists	0	1	1	0	2	0	0	1	1	0	0	0	2	0	2	0	0	0	1	0	1	0	1	2	0	2	0	0	0	1	0	1	0	1		
Bio. Scientists	48	46	36	27	48	33	37	35	45	30	22	32	22	22	35	23	19	13	13	3	24			22	22	35	23	19	13	13	3	24				
CI Scientists	0	4	6	1	5	3	2	6	1	3	3	1	2	4	2	2	3	0	0	4	1			2	4	2	2	3	0	0	4	1				
Chirops/ Pods	4	3	2	1	6	3	0	6	1	8	0	3	7	3	2	3	8	2	2	2	1			7	3	2	3	8	2	2	2	1				
Dietitians	7	9	7	21	15	8	7	13	13	18	8	12	6	3	7	15	7	8	7	6	4			6	3	7	15	7	8	7	6	4				
OTs	73	49	35	26	41	50	23	73	26	41	34	38	29	32	23	31	23	15	7	48	16			29	32	23	31	23	15	7	48	16				
ODPs	0	0	1	1	1	0	2	0	2	0	0	0	0	0	1	0	1	1	0	1	0			0	0	1	0	1	1	0	1	0				
Orthoptists	0	1	0	0	0	0	0	1	0	0	1	0	0	0	1	0	0	3	0	0	0			0	0	1	0	0	3	0	0	0				
Paramedics	0	2	0	0	2	2	0	3	2	2	2	1	3	0	2	2	0	1	1	0	3			3	0	2	2	0	1	1	0	3				
Physiotherapists	75	151	75	82	91	77	95	80	56	73	68	62	26	110	62	56	42	42	35	27	28			26	110	62	56	42	42	35	27	28				
Prosth/Orthotists	1	1	0	1	0	0	1	0	0	0	0	0	2	0	0	0	1	0	0	2	1			2	0	0	0	1	0	0	2	1				
Radiographers	65	67	54	49	63	71	77	99	54	96	23	102	56	48	45	32	48	39	15	26	10			56	48	45	32	48	39	15	26	10				
SLTs	20	7	16	12	11	11	20	19	10	24	11	12	7	12	16	15	6	4	16	5	6			7	12	16	15	6	4	16	5	6				
<b>TOTAL</b>	<b>293</b>	<b>341</b>	<b>233</b>	<b>221</b>	<b>285</b>	<b>258</b>	<b>264</b>	<b>336</b>	<b>211</b>	<b>295</b>	<b>172</b>	<b>263</b>	<b>162</b>	<b>234</b>	<b>198</b>	<b>179</b>	<b>158</b>	<b>128</b>	<b>97</b>	<b>124</b>	<b>95</b>			<b>162</b>	<b>234</b>	<b>198</b>	<b>179</b>	<b>158</b>	<b>128</b>	<b>97</b>	<b>124</b>	<b>95</b>				

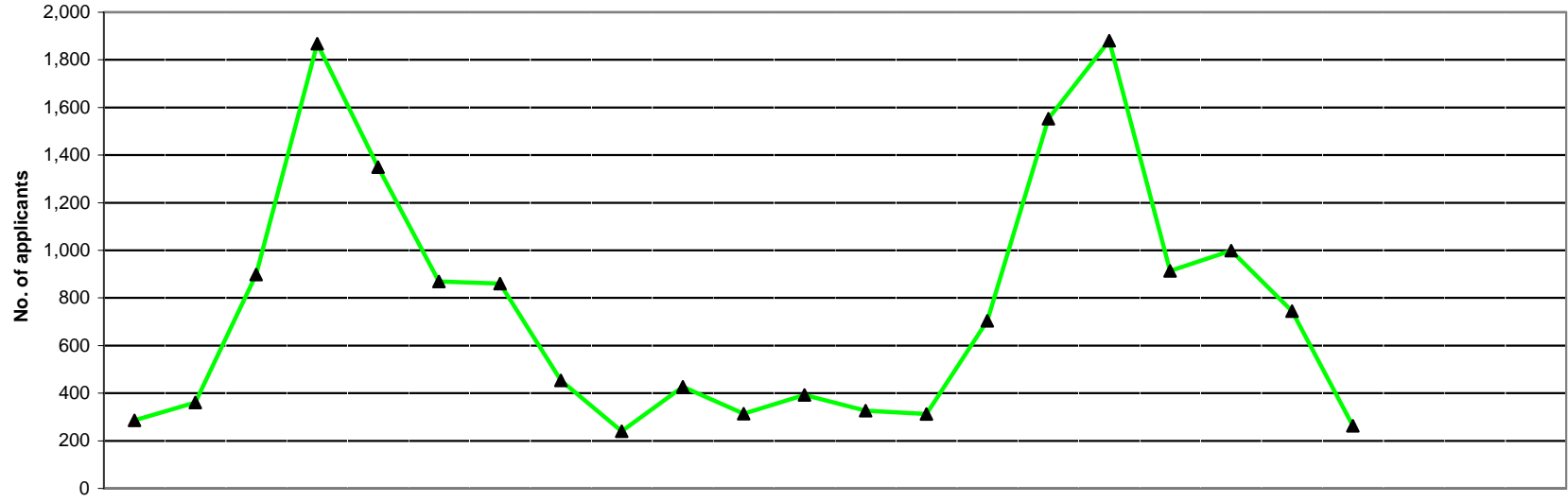
2004/5 FYE	2005/6 FYE	2006/7 FYE	2007/8 YTD
9	3	6	6
363	417	439	174
20	26	35	18
39	25	37	30
164	93	138	63
668	615	509	224
1	6	7	4
1	3	3	4
19	6	16	12
1,339	1,193	985	428
6	6	4	6
681	496	820	319
204	218	173	87
<b>3,514</b>	<b>3,107</b>	<b>3,172</b>	<b>1,375</b>



	2006			2007									2008											
	Apr	May	Jun	Jul	Aug	Sep	Oct	Nov	Dec	Jan	Feb	Mar	Apr	May	Jun	Jul	Aug	Sep	Oct	Nov	Dec	Jan	Feb	Mar
Minimum Info	367	385	358	364	338	356	345	341	58	369	41	29	49	77	306	337	430	369	332	333	331			
Awaiting Pass List	47	57	210	97	110	110	46	48	39	205	21	17	22	39	105	39	64	205	26	21	19			
Pending Reg. Fee	2	4	8	35	17	19	6	0	0	8	0	231	1	1	13	25	8	8	2	3	2			
<b>TOTAL</b>	<b>416</b>	<b>446</b>	<b>576</b>	<b>496</b>	<b>465</b>	<b>485</b>	<b>397</b>	<b>389</b>	<b>97</b>	<b>582</b>	<b>62</b>	<b>277</b>	<b>72</b>	<b>117</b>	<b>424</b>	<b>401</b>	<b>502</b>	<b>582</b>	<b>360</b>	<b>357</b>	<b>352</b>			

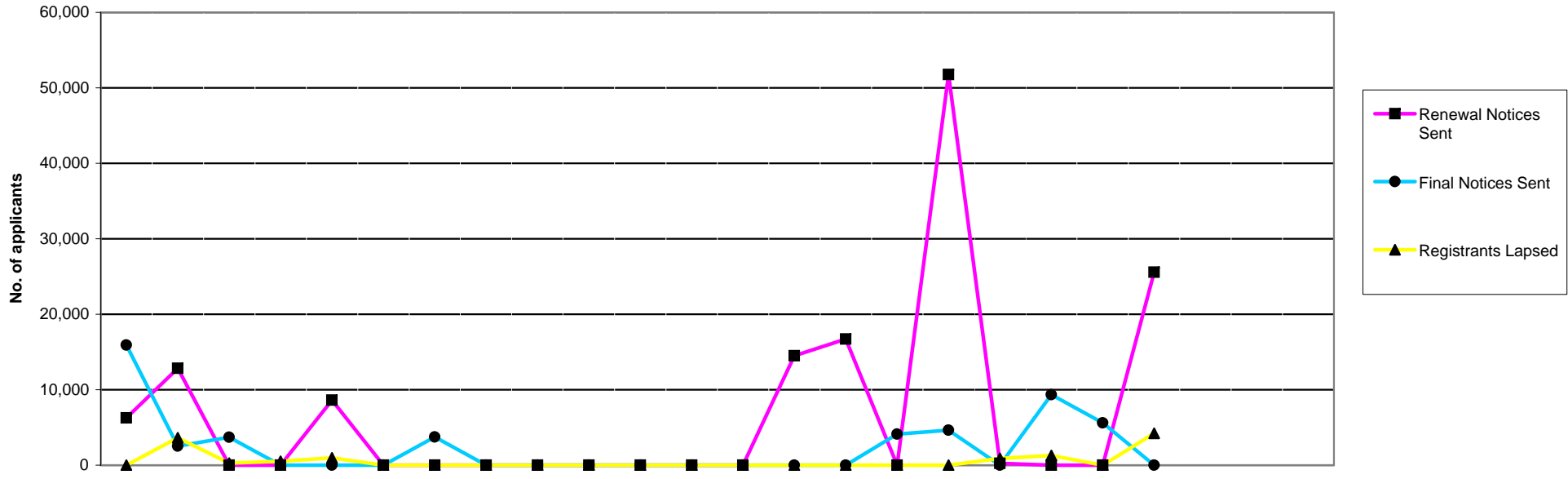
2004/5 FYE	2005/6 FYE	2006/7 FYE	2007/8 YTD
277	367	29	331
32	41	17	19
1	2	231	2
<b>310</b>	<b>410</b>	<b>277</b>	<b>352</b>

NOTE: Information covers UK applications only  
 Represents the current workload within the UK Registration Department as at the end of the month



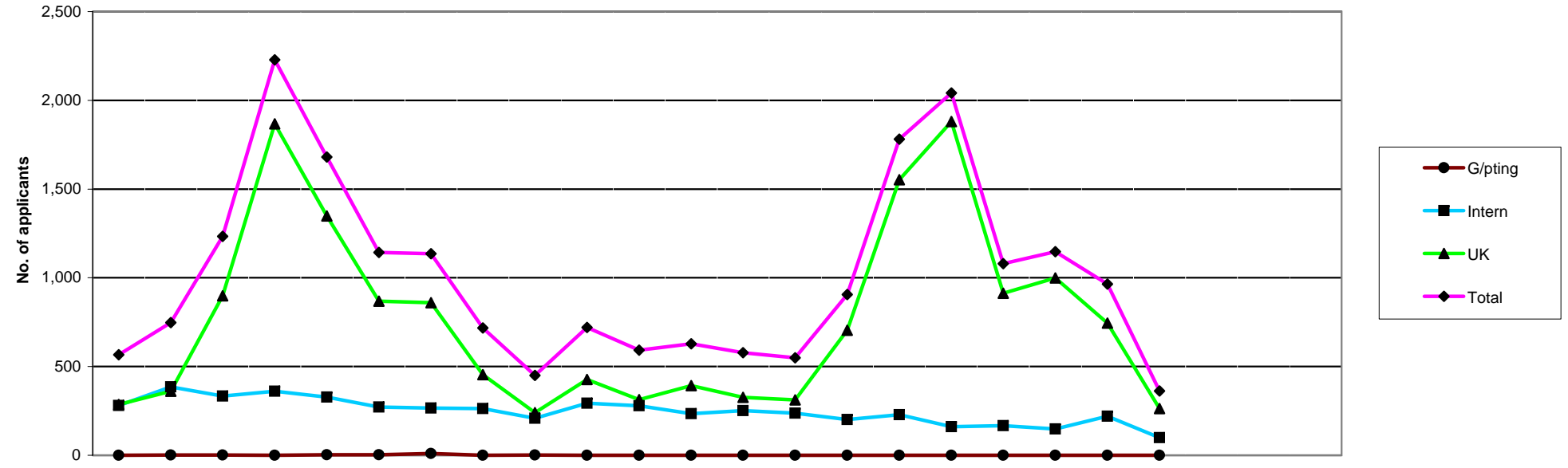
	2006												2007												2008											
	Apr	May	Jun	Jul	Aug	Sep	Oct	Nov	Dec	Jan	Feb	Mar	Apr	May	Jun	Jul	Aug	Sep	Oct	Nov	Dec	Jan	Feb	Mar	Apr	May	Jun	Jul	Aug	Sep	Oct	Nov	Dec	Jan	Feb	Mar
Arts Ths	18	17	13	15	24	9	25	11	9	13	14	16	20	18	18	11	23	15	14	13	7	20	18	18	11	23	15	14	13	7						
Bio. Scs	56	60	45	82	60	47	70	65	36	75	56	38	40	60	45	57	72	62	60	75	39	40	60	45	57	72	62	60	75	39						
CI Scs	14	9	14	15	15	6	9	14	4	13	13	19	26	2	12	10	18	7	14	20	13	26	2	12	10	18	7	14	20	13						
Ch/ Pods	1	4	60	116	64	34	30	6	9	11	4	2	4	10	46	119	118	38	36	25	4	4	10	46	119	118	38	36	25	4						
Dietitians	20	16	60	106	28	20	26	11	4	6	10	24	13	20	62	72	67	30	34	24	7	13	20	62	72	67	30	34	24	7						
ODPs	17	27	28	35	97	166	103	26	36	31	37	65	56	25	84	33	83	149	119	163	17	56	25	84	33	83	149	119	163	17						
OTs	25	53	105	320	299	179	171	82	11	52	17	13	25	17	10	212	379	175	224	38	0	25	17	10	212	379	175	224	38	0						
Orths	1	1	6	14	9	3	2	2	0	3	0	0	0	0	3	15	14	3	5	0	36	0	0	3	15	14	3	5	0	36						
Paras	53	80	54	86	78	65	59	74	56	95	42	65	48	75	66	52	99	68	85	103	58	48	75	66	52	99	68	85	103	58						
Physios	55	50	223	599	392	205	174	97	48	86	89	102	71	41	130	543	605	197	196	169	54	71	41	130	543	605	197	196	169	54						
Pr/Orths	4	1	1	0	0	0	22	1	2	1	0	0	0	0	0	0	1	0	18	8	2	0	0	0	0	1	0	18	8	2						
Rads	12	27	253	396	153	74	66	23	10	9	9	19	8	24	193	381	251	76	88	32	10	8	24	193	381	251	76	88	32	10						
SLTs	10	16	36	84	130	61	103	42	15	32	23	30	16	20	35	48	151	93	106	75	16	16	20	35	48	151	93	106	75	16						
<b>TOTAL</b>	<b>286</b>	<b>361</b>	<b>898</b>	<b>1,868</b>	<b>1,349</b>	<b>869</b>	<b>860</b>	<b>454</b>	<b>240</b>	<b>427</b>	<b>314</b>	<b>393</b>	<b>327</b>	<b>312</b>	<b>704</b>	<b>1,553</b>	<b>1,881</b>	<b>913</b>	<b>999</b>	<b>745</b>	<b>263</b>	<b>327</b>	<b>312</b>	<b>704</b>	<b>1,553</b>	<b>1,881</b>	<b>913</b>	<b>999</b>	<b>745</b>	<b>263</b>						

2004/5	2005/6	2006/7	2007/8
FYE	FYE	FYE	YTD
160	234	184	139
820	912	690	510
138	155	145	122
329	399	341	400
319	367	331	329
394	754	668	729
1,468	1,544	1,327	1,080
44	34	41	76
1,026	1,247	807	654
1,926	2,051	2,120	2,006
40	46	32	29
886	1,008	1,051	1,063
572	746	582	560
<b>8,122</b>	<b>9,497</b>	<b>8,319</b>	<b>7,697</b>

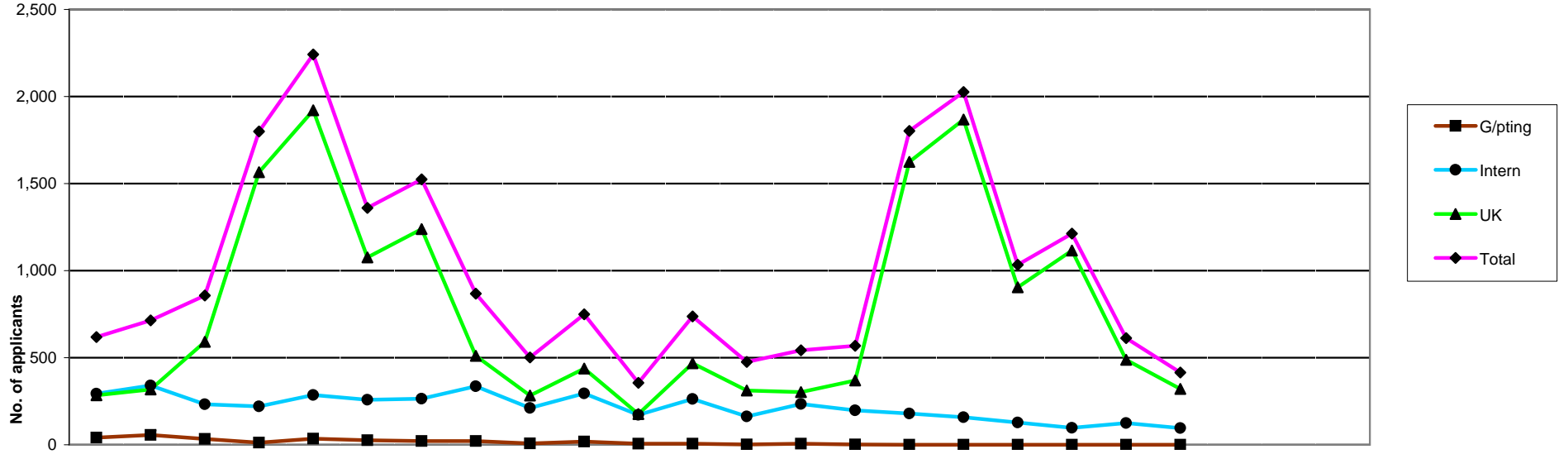


	2006			2007									2008											
	Apr	May	Jun	Jul	Aug	Sep	Oct	Nov	Dec	Jan	Feb	Mar	Apr	May	Jun	Jul	Aug	Sep	Oct	Nov	Dec	Jan	Feb	Mar
<b>Renewal Notices Sent</b>	6,257	12,825	0	0	8,629	0	0	0	0	0	0	0	0	14,510	16,704	0	51,782	242	0	0	25,556			
<b>Final Notices Sent</b>	15,928	2,535	3,694	0	0	0	3,752	0	0	0	0	0	0	0	0	4,101	4,622	0	9,339	5,605	0			
<b>TOTAL</b>	22,185	15,360	3,694	0	8,629	0	3,752	0	0	0	0	0	0	14,510	16,704	4,101	56,404	242	9,339	5,605	25,556			
<b>Registrants Lapsed</b>	0	3,643	278	508	959	0	0	0	0	0	0	0	0	0	0	0	0	894	1,291	0	4,234			

2004/5 FYE	2005/6 FYE	2006/7 FYE	2007/7 YTD
24,781	142,363	27,711	108,794
19,846	36,261	25,909	23,667
44,627	178,624	53,620	132,461
7,423	9,448	5,388	6,419

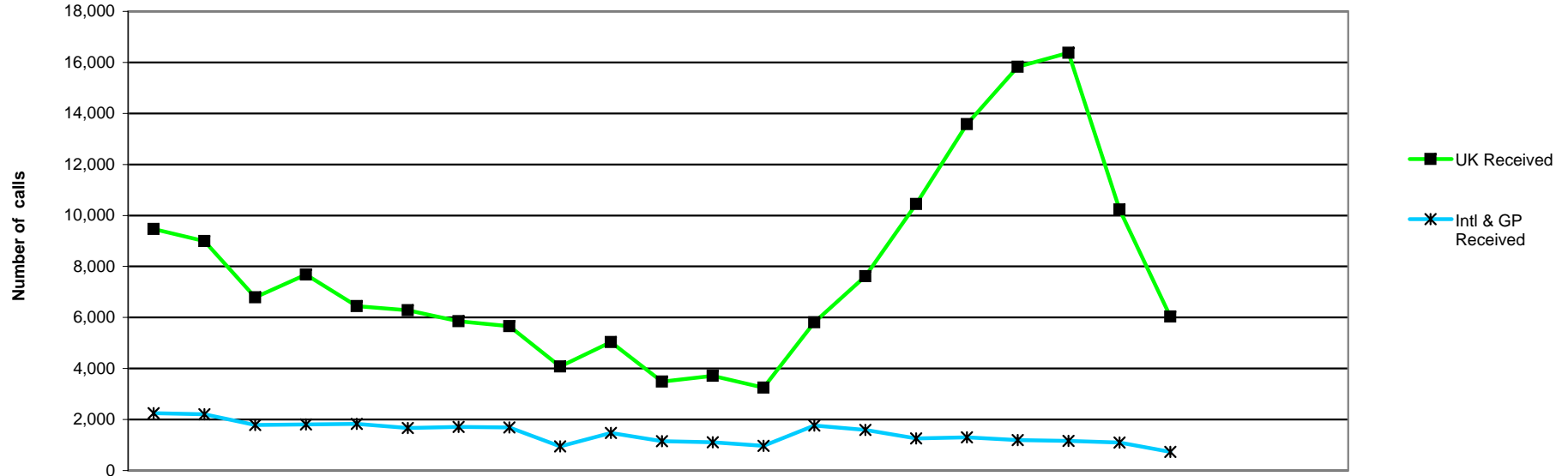


	2006			2007										2008			2004/5	2005/6	2006/7	2007/7								
	Apr	May	Jun	Jul	Aug	Sep	Oct	Nov	Dec	Jan	Feb	Mar	Apr	May	Jun	Jul	Aug	Sep	Oct	Nov	Dec	Jan	Feb	Mar	FYE	FYE	FYE	YTD
<b>G/pting</b>	0	1	2	0	3	3	10	0	1	0	0	0	0	0	0	0	0	0	0	0	0	0	0	0	2,718	2,479	20	0
<b>Intern</b>	280	385	334	361	328	271	266	263	209	293	279	235	251	237	201	228	161	167	148	220	99			5,235	4,626	3,504	1,712	
<b>UK</b>	286	361	898	1,868	1,349	869	860	454	240	427	314	393	327	312	704	1,553	1,881	913	999	745	263			8,122	9,497	8,319	7,697	
<b>Total</b>	566	747	1,234	2,229	1,680	1,143	1,136	717	450	720	593	628	578	549	905	1,781	2,042	1,080	1,147	965	362			16,075	16,602	11,843	9,409	

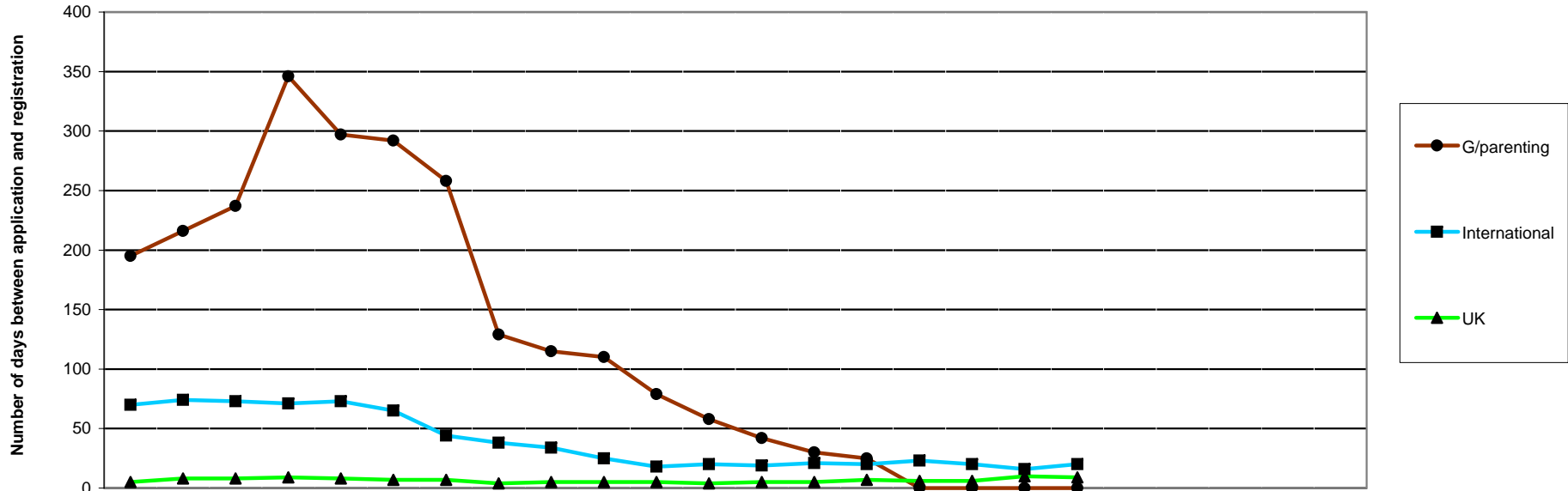


	2006			2007												2008			2004/5	2005/6	2006/7	2007/8							
	Apr	May	Jun	Jul	Aug	Sep	Oct	Nov	Dec	Jan	Feb	Mar	Apr	May	Jun	Jul	Aug	Sep	Oct	Nov	Dec	Jan	Feb	Mar	FYE	FYE	FYE	YTD	
<b>G/pting</b>	41	56	33	12	35	26	22	21	7	18	6	6	2	6	1	0	0	0	0	0	0	0	0	0	0	0	0	0	9
<b>Intern</b>	293	341	233	221	285	258	264	336	211	295	172	263	162	234	198	179	158	128	97	124	95								1,375
<b>UK</b>	284	318	591	1,566	1,921	1,076	1,238	511	283	437	177	468	312	303	370	1,624	1,868	905	1,116	488	320								7,306
<b>Total</b>	618	715	857	1,799	2,241	1,360	1,524	868	501	750	355	737	476	543	569	1,803	2,026	1,033	1,213	612	415								8,690





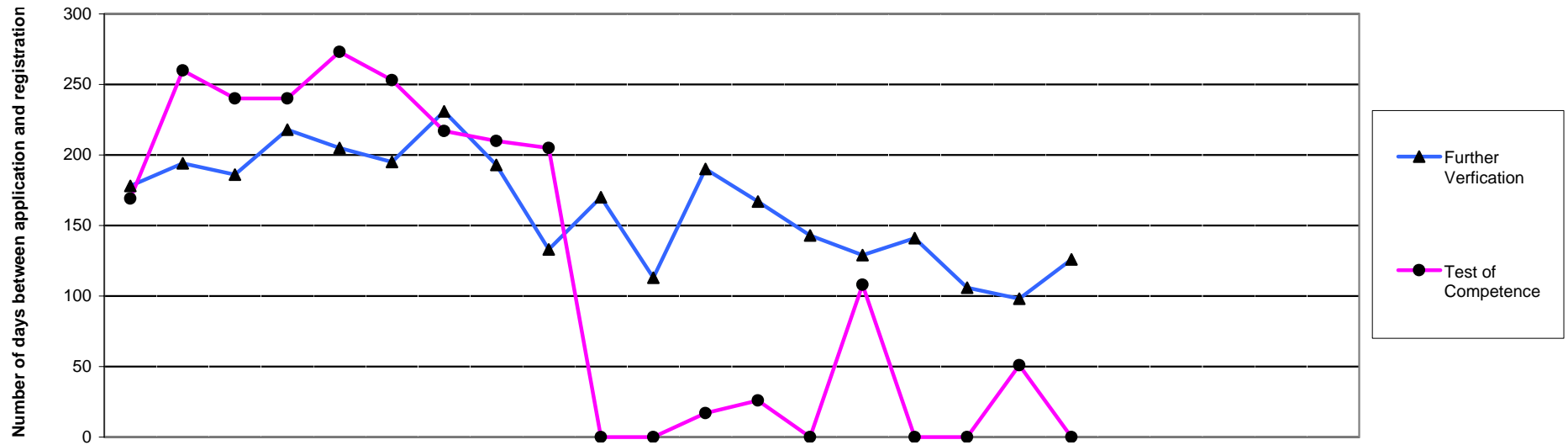
	2006												2007												2008												2004/5 FYE	2005/6 FYE	2006/7 FYE	2007/8 YTD
	Apr	May	Jun	Jul	Aug	Sep	Oct	Nov	Dec	Jan	Feb	Mar	Apr	May	Jun	Jul	Aug	Sep	Oct	Nov	Dec	Jan	Feb	Mar	Apr	May	Jun	Jul	Aug	Sep	Oct	Nov	Dec	Jan	Feb	Mar				
<b>Intl &amp; GP</b>																																								
<b>Intl &amp; GP Received</b>	2,244	2,201	1,789	1,804	1,830	1,663	1,714	1,687	950	1,475	1,150	1,105	968	1,764	1,590	1,259	1,303	1,195	1,162	1,094	730	45,574	40,070	19,612	11,065															
<b>Answered</b>	1,787	1,917	1,673	1,700	1,669	1,566	1,595	1,543	894	1,390	1,103	1,059	943	1,675	1,504	1,188	1,150	1,038	1,108	1,036	668	34,502	33,467	17,896	10,310															
<b>Calls answered (%)</b>	80	87	93	94	92	94	93	92	94	94	96	96	97	95	95	94	89	87	95	95	92	76	84	92	93															
<b>Adandoned</b>	457	284	116	104	161	97	119	144	56	85	47	46	25	89	86	71	153	157	54	58	62	11,264	6,627	1,716	755															
<b>Avg answer time (sec)</b>	20	18	15	16	11	17	12	10	8	11	19	15	11	10	8	11	14	14	12	9	9	36	25	14	11															
<b>Avg talk time (min)</b>	2.43	2.32	2.43	2.35	2.42	2.49	2.49	3.01	2.51	3.02	3.08	3.12	3.10	2.58	2.43	2.49	2.44	2.53	2.40	2.57	3.29	2.30	2.32	2.64	2.65															
<b>UK</b>																																								
<b>UK Received</b>	9,464	8,995	6,787	7,683	6,441	6,280	5,856	5,663	4,082	5,033	3,489	3,715	3,248	5,808	7,622	10,448	13,576	15,827	16,371	10,232	6,041	103,274	70,233	73,488	89,173															
<b>Answered</b>	7,845	7,995	6,464	6,983	6,121	5,555	5,284	5,439	3,736	4,980	3,450	3,641	3,207	5,598	7,360	9,105	9,924	8,640	10,429	8,460	4,626	79,498	50,518	67,493	67,349															
<b>Calls answered (%)</b>	83	84	95	91	95	89	90	98	92	99	99	98	99	96	97	87	73	55	64	83	77	82	70	93	81															
<b>Adandoned</b>	1,619	1,440	323	700	320	725	572	124	346	53	39	74	41	210	262	1,343	3,652	7,187	5,942	1,772	1,415	24,198	10,719	6,335	21,824															
<b>Avg answer time (sec)</b>	86	96	44	74	54	52	32	22	27	16	18	21	20	30	21	29	103	161	267	74	75	67	64	45	87															
<b>Avg talk time (min)</b>	2.25	2.46	2.24	2.12	2.16	2.22	2.02	2.04	2.21	2.07	2.08	2.05	2.02	2.08	2.27	2.19	2.35	3.00	3.06	2.43	3.12	2.13	1.78	2.16	2.50															



	2006			2007									2008											
	Apr	May	Jun	Jul	Aug	Sep	Oct	Nov	Dec	Jan	Feb	Mar	Apr	May	Jun	Jul	Aug	Sep	Oct	Nov	Dec	Jan	Feb	Mar
G/parenting	195	216	237	346	297	292	258	129	115	110	79	58	42	30	25	0	0	0	0					
International	70	74	73	71	73	65	44	38	34	25	18	20	19	21	20	23	20	16	20					
UK	5	8	8	9	8	7	7	4	5	5	5	4	5	5	7	6	6	10	9					

2004/5 FYE	2005/6 FYE	2006/7 FYE	2007/8 YTD
42	92	194	14
39	76	50	20
6	7	6	7
<b>AVERAGE</b>			

NOTE: For INTL & GP assessments, measured from, the application is entered onto the registration system to initial assessor decision is made. (ACCEPT, REJECT, FV, TOC)  
 For UK applications, measured from application is entered onto the registration system to when the applicant is registered. HPC applications only

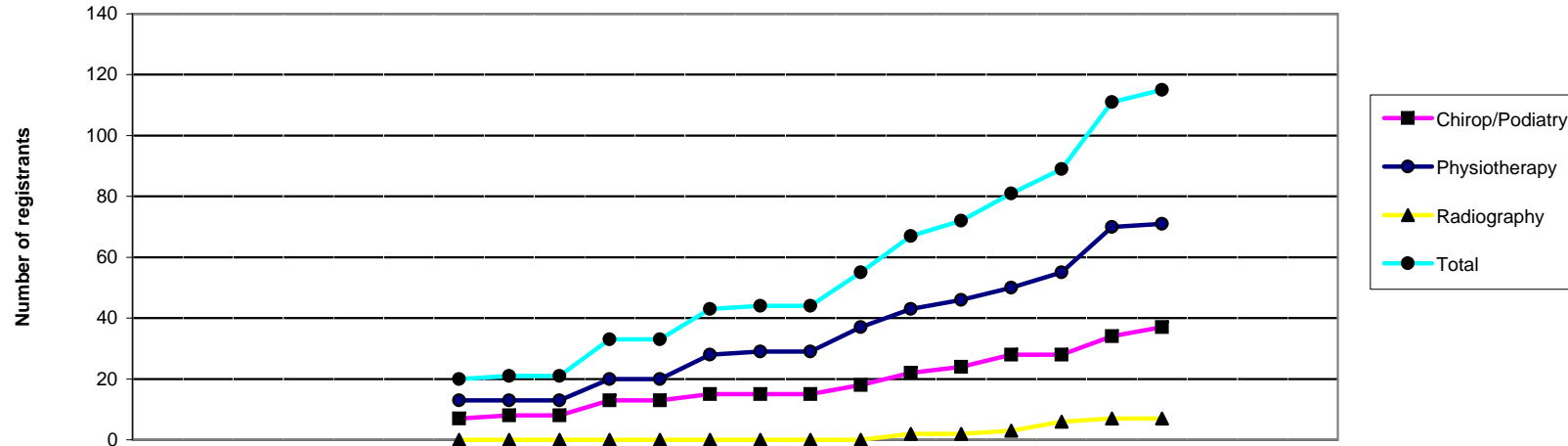


Grandparenting & International	2006												2007												2008											
	Apr			May			Jun			Jul			Aug			Sep			Oct			Nov			Dec			Jan			Feb			Mar		
	Further Verification	Test of Competence		Further Verification	Test of Competence		Further Verification	Test of Competence		Further Verification	Test of Competence		Further Verification	Test of Competence		Further Verification	Test of Competence		Further Verification	Test of Competence		Further Verification	Test of Competence		Further Verification	Test of Competence		Further Verification	Test of Competence							
Further Verification	178	194	186	218	205	195	231	193	133	170	113	190	167	143	129	141	106	98	126																	
Test of Competence	169	260	240	240	273	253	217	210	205	0	0	17	26	0	108	0	0	51	0																	

2004/5	2005/6	2006/7	2007/8
FYE	FTE	FTE	YTD
101	145	184	130
150	158	174	26
<b>AVERAGE</b>			

Health Professions Council

Number of registrants with supplementary prescribing rights 2006-8



	2006			2007						2008														
	Apr	May	Jun	Jul	Aug	Sep	Oct	Nov	Dec	Jan	Feb	Mar	Apr	May	Jun	Jul	Aug	Sep	Oct	Nov	Dec	Jan	Feb	Mar
Chiropr/Podiatry							7	8	8	13	13	15	15	15	18	22	24	28	28	34	37			
Physiotherapy							13	13	13	20	20	28	29	29	37	43	46	50	55	70	71			
Radiography							0	0	0	0	0	0	0	0	0	2	2	3	6	7	7			
<b>Total</b>							20	21	21	33	33	43	44	44	55	67	72	81	89	111	115			

2006/7	2007/8
FYE	YTD
15	37
28	71
0	7
43	115