

Human Resources, Partners – Deborah Dawkins

Recruitment

The main activity for Partners this year continues:

Practitioner Psychologists – The third round of recruitment for the remaining Partners is now complete. Council has now approved those to whom we have made provisional offers. Training for Panel Members and Registration Assessors will be taking place in July. All in all we have recruited seventy-three persons covering one hundred and seven roles across the seven domains.

CPD Assessors – interviews for the next five professions that are due to undergo CPD audit (Clinical Scientists, Prosthetists / Orthotists, Speech & Language, Occupational Therapists and Biomedical Scientists) will be taking place at the end of June into the beginning of July

Training

Training for CPD Assessors recruited for one Orthoptist and five Paramedics took place in May.

Refresher training is currently ongoing for Panel Members (led by FTP) and Registration Assessors (led by Registrations). This is scheduled to continue throughout May and June.

Appraisals

These have begun for Panel Members. Presently, we are appraising during hearings running for two days and over.

Date	Ver.	Dept/Cmte	Doc Type	Title	Status	Int. Aud.
2008-08-12	a	QUA	RPT	Council Business Process Improvement 22nd August 08	Final DD: None	Public RD: None

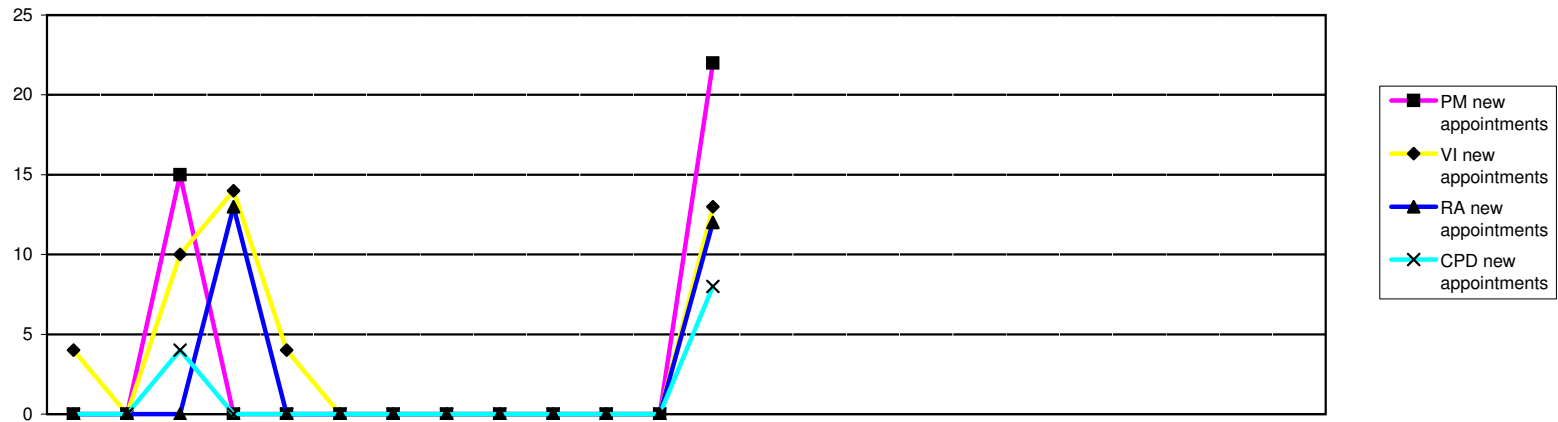
NB the volumes for panel members, visitors, registration assessors and CPD assessors include some partners performing several roles

Panel members and visitors

Panel members	2008			2009									2010									2005/6	2006/7	2007/8	2008/9	2009/10			
	Apr	May	Jun	Jul	Aug	Sep	Oct	Nov	Dec	Jan	Feb	Mar	Apr	May	Jun	Jul	Aug	Sep	Oct	Nov	Dec	Jan	Feb	Mar	FYE	FYE	FYE	FYE	YTD
Arts therapists	5	5	5	5	5	5	2	2	2	0	0	0	0												7	7	5	0	0
Biomedical scientists	18	18	18	18	18	18	18	18	18	18	18	18	18												25	24	18	18	18
Chirops & podiatrists	9	9	9	9	9	9	9	9	9	9	8	8	8											11	11	9	8	8	
Clinical scientists	30	30	30	30	30	30	30	30	30	29	29	29	29											46	44	30	29	29	
Dietitians	6	6	6	6	6	6	6	6	6	6	6	6	6											13	13	6	6	6	
Occupational therapists	8	8	8	11	11	11	11	11	11	11	11	11	11											12	12	8	11	11	
ODPs	10	10	10	12	12	12	12	12	12	12	12	12	12											10	10	10	12	12	
Orthoptists	6	6	6	6	6	6	5	5	5	5	5	5	5											4	5	6	5	5	
Paramedics	14	14	14	14	14	14	14	14	14	14	14	14	14											16	16	14	14	14	
Physiotherapists	32	32	32	32	32	32	31	31	31	29	28	28	28											37	37	32	28	28	
Prosthetists & orthotists	3	3	3	5	5	5	4	4	4	3	2	2	2											3	3	3	2	2	
Psychologist practitioners													23															23	
Radiographers	19	19	19	20	20	20	20	20	20	20	20	20	20											20	20	19	20	20	
SLTs	12	12	12	12	12	12	12	12	12	12	12	12	12											13	13	12	12	12	
Lay members	39	39	39	39	39	39	39	39	39	39	39	39	39											79	78	39	39	39	
Total	211	211	211	219	219	219	213	213	213	207	204	204	227											296	293	211	204	227	
Visitors																								FYE	FYE	FYE	FYE	YTD	
Arts therapists	15	15	15	15	15	15	15	15	15	15	15	15	15											21	22	13	15	15	
Biomedical scientists	11	11	11	11	11	11	12	12	12	12	12	12	12											11	13	11	12	12	
Chirops & podiatrists	11	11	11	11	11	11	11	11	11	11	11	11	11											19	20	10	11	11	
Clinical scientists	6	6	6	6	6	6	5	5	5	5	5	5	5											12	13	6	5	5	
Dietitians	6	6	6	6	6	6	5	5	5	5	5	5	5											8	9	6	5	5	
Occupational therapists	10	10	10	10	10	10	14	14	14	14	14	14	14											18	21	10	14	14	
ODPs	10	10	10	10	10	10	10	10	10	10	10	10	10											11	11	10	10	10	
Orthoptists	5	5	5	5	5	5	6	6	6	6	6	6	6											6	7	5	6	6	
Paramedics	14	14	14	14	14	14	17	17	17	17	17	17	17											20	20	14	17	17	
Physiotherapists	17	17	17	17	17	17	16	16	16	16	16	16	16											17	20	17	16	16	
Prosthetists & orthotists	4	4	4	4	4	4	4	4	4	4	4	4	4											2	1	3	4	4	
Psychologist practitioners													19															19	
Radiographers	17	17	17	17	17	17	17	17	17	17	17	17	17											29	20	17	17	17	
SLTs	10	10	10	10	10	10	11	11	11	11	11	11	11											16	16	10	11	11	
Lay members	4	4	4	4	4	4	4	4	4	4	4	4	4											12	18	4	4	4	
Total	140	140	140	140	140	140	147	147	147	147	147	147	166											123	211	136	147	166	

Page 20 contd - Registration assessors and CPD assessors

Registration assessors	2008												2009												2010												2005/6	2006/7	2007/8	2008/9	2009/10	
	Apr	May	Jun	Jul	Aug	Sep	Oct	Nov	Dec	Jan	Feb	Mar	Apr	May	Jun	Jul	Aug	Sep	Oct	Nov	Dec	Jan	Feb	Mar	Apr	May	Jun	Jul	Aug	Sep	Oct	Nov	Dec	Jan	Feb	Mar	FYE	FYE	FYE	YTD	YTD	
Arts therapists	8	8	8	8	8	8	6	6	6	6	6	6	6												6												8	8	8	6	6	
Biomedical scientists	19	19	19	19	19	19	18	18	18	18	18	18	18												18													19	19	19	18	18
Chirops & podiatrists	15	15	15	15	15	15	17	17	17	17	17	17	17												17													15	15	15	17	17
Clinical scientists	43	43	43	43	43	43	25	25	25	25	25	25	25												25													44	43	43	25	25
Dietitians	11	11	11	11	11	11	9	9	9	9	9	9	9												9													11	11	11	9	9
Occupational therapists	13	13	13	13	13	13	12	12	12	12	12	12	12												12													13	13	13	12	12
ODPs	5	5	5	5	5	5	4	4	4	4	4	4	4												4													5	5	5	4	4
Orthoptists	6	6	6	6	6	6	6	6	6	6	6	6	6												6													5	6	6	6	6
Paramedics	15	15	15	15	15	15	15	15	15	15	15	15	15												15													15	15	15	15	15
Physiotherapists	25	25	25	25	25	25	25	25	25	25	25	25	25												25													24	25	25	25	25
Prosthetists & orthotists	3	3	3	3	3	3	3	3	3	3	3	3	3												3													3	3	3	3	3
Psychologist practitioners													18												18																	18
Radiographers	20	20	20	20	20	20	17	17	17	17	17	17	17												17													20	20	20	17	17
SLTs	14	14	14	14	14	14	12	12	12	12	12	12	12												12													14	14	14	12	12
Total	197	197	197	197	197	197	169	169	169	169	169	169	187												187													196	197	197	169	187
CPD assessors																																						FYE	FYE	FYE	FYE	YTD
Arts therapists	Not previously required																																									0
Biomedical scientists	Not previously required																																								0	
Chirops & Podiatrists	0	14	14	14	14	14	13	13	13	13	13	13	13												13															0	13	13
Clinical scientists	Not previously required																																								0	
Dietitians	Not previously required																																								0	
Occupational therapists	Not previously required																																								0	
ODPs	0	0	7	7	7	7	10	10	10	10	10	10	10												10															0	10	10
Orthoptists	Not previously required																								1																1	
Paramedics	Not previously required																								6																6	
Physiotherapists	Not previously required																																								0	
Prosthetists & orthotists	Not previously required																																								0	
Psychologist practitioners	Not previously required																																								0	
Radiographers	Not previously required																																								0	
SLTs	Not previously required																																								0	
Total	14	21	21	21	21	21	23	23	23	23	23	23	30												30															0	23	30



	2008			2009									2010			2005/6	2006/7	2007/8	2008/9	2009/10											
	Apr	May	Jun	Jul	Aug	Sep	Oct	Nov	Dec	Jan	Feb	Mar	Apr	May	Jun	Jul	Aug	Sep	Oct	Nov	Dec	Jan	Feb	Mar	FYE	FYE	FYE	FYE	YTD		
Panel members																															
PM new appointments	0	0	15	0	0	0	0	0	0	0	0	0	22											0	0	7	15	22			
Trained	211	211	211	219	219	219	219	219	219	219	219	219	242											296	293	211	219	242			
Awaiting training	16	16	31	21	21	21	21	21	21	21	21	21	20											15	23	16	21	20			
Visitors																															
VI new appointments	4	0	10	14	4	0	0	0	0	0	0	0	13											0	0	13	32	13			
Trained	123	123	123	123	138	138	138	138	138	138	138	138	157											202	223	123	138	157			
Awaiting training	9	9	19	37	26	26	26	26	26	26	26	26	20											88	80	13	26	20			
Registration assessors																															
RA new appointments	0	0	0	13	0	0	0	0	0	0	0	0	12											0	0	1	13	12			
Trained	193	193	193	193	193	193	193	193	193	193	193	193	211											196	197	193	193	211			
Awaiting training	1	1	1	14	14	14	14	14	14	14	14	14	7											24	23	1	14	7			
CPD assessors																															
CPD new appointments	0	0	4	0	0	0	0	0	0	0	0	0	8													22	4	8			
Trained	0	0	21	21	21	21	25	25	25	25	25	25	31													0	25	31			
Awaiting training	22	22	5	5	5	5	1	1	1	1	1	1	2													23	1	2			