

INTRODUCTION

The HCPC has assessed the length of time that International route registrants remained registered for following their first registration. This analysis is hoped to contribute to wider workforce planning efforts.

METHODS

All new international route Practitioner psychologists first registering between 01 March 2013 and 28 Feb 2017 were included (n=574) and their registration status at least four years later determined. The registrant's nationalities were grouped by World Bank income categories as at 2015 into High Income Countries (HIC) or Low & Middle Income Countries (LMIC). The Kaplan-Meier method was used to estimate the percent remaining registered and the corresponding 95% confidence intervals for those estimates.

Where registrants hold more than one modality, they are counted in each of those modalities. Therefore the sum of the modalities may be greater than the all profession total. Retention rates have only been calculated for modalities and subgroups with at least 20 registrants.

RESULTS

Overall international route retention

Profession	n	Retention rate		For further details
		%	95% CI	
Practitioner psychologists	574	82.5	79.2 to 85.4	Whole profession factsheet
Clinical psychologists	373	83.0	78.8 to 86.5	Page 2 of this factsheet
Counselling psychologists	157	83.4	76.5 to 88.3	Page 3 of this factsheet
Educational psychologists	65	80.0	68.1 to 87.9	Page 4 of this factsheet
Forensic psychologists	32	96.9	79.8 to 99.6	Page 5 of this factsheet
Health psychologists	18	-	-	Page 6 of this factsheet
Occupational psychologists	16	-	-	Page 7 of this factsheet
Sport & Exercise psychologists	7	-	-	Page 8 of this factsheet

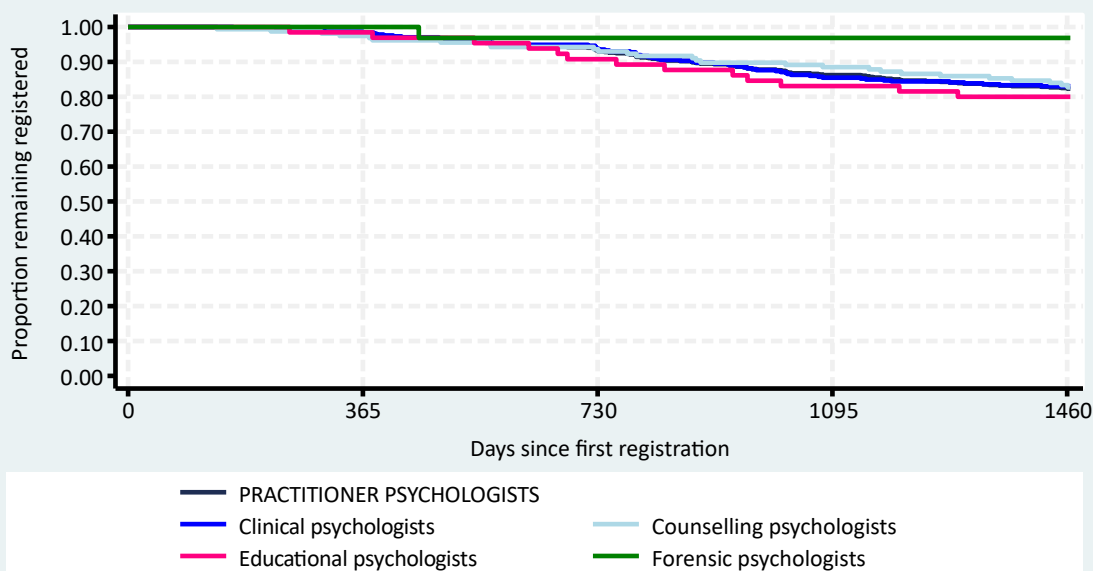


Table 1: Comparison of routes and nationalities, Clinical psychologists

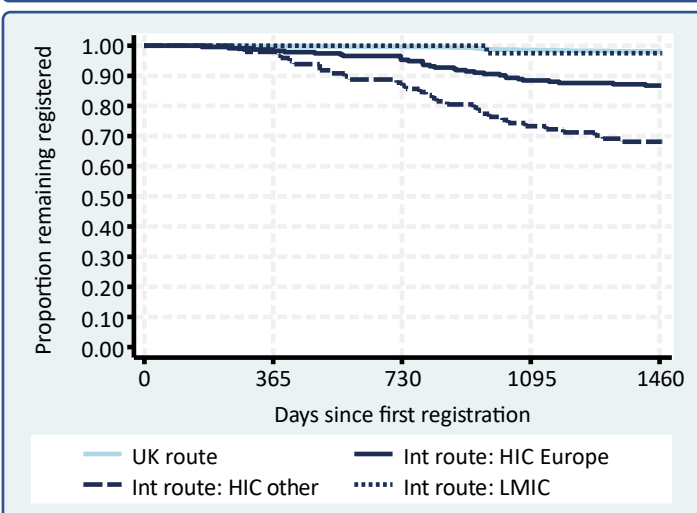
Route and country group	n	%	Retention rate	
			%	95% CI
UK route	2,480	87	98.0	97.4 to 98.5
Intl. route: HIC Europe	235	8	86.8	81.7 to 90.5
Intl. route: HIC other	98	3	68.1	57.9 to 76.4
Intl. route: LMIC	40	1	97.5	83.6 to 99.6

Table 2: International route demographic groups, Clinical psychologists

Demographic group	n	%	Retention rate	
			%	95% CI
HIC Europe: Female 20-29	28	8	88.9	69.4 to 96.3
HIC Europe: Female 30+	169	45	86.4	80.2 to 90.7
HIC Europe: Male 20-29	3	1	-	-
HIC Europe: Male 30+	35	9	85.7	69.0 to 93.8
HIC other: Female 20-29	25	7	54.9	33.4 to 72.0
HIC other: Female 30+	55	15	67.3	53.2 to 78.0
HIC other: Male 20-29	1	<1	-	-
HIC other: Male 30+	17	5	88.2	60.6 to 96.9
LMIC: Female 20-29	8	2	-	-
LMIC: Female 30+	23	6	100	-
LMIC: Male 20-29	3	1	-	-
LMIC: Male 30+	6	2	-	-

Table 3: Largest international route nationalities, Clinical psychologists

Country of nationality	n	%	Retention rate	
			%	95% CI
Australia	56	15	69.3	55.3 to 79.7
United Kingdom	49	13	91.8	79.5 to 96.8
Italy	46	12	89.1	75.8 to 95.3
Portugal	33	9	93.9	77.9 to 98.5
Spain	24	6	91.7	70.6 to 97.9
South Africa	23	6	95.7	72.9 to 99.4
United States	22	6	77.3	53.7 to 89.9
Republic of Ireland	19	5	-	-
Greece	13	3	-	-
Poland	12	3	-	-



International route demographic groups

As has been seen in other professions, international registrants from High Income Countries outside of Europe have lower retention rates. And these tend to be lower in females and in younger registrants, as seen here. See Tables 2 & 3 for further details.

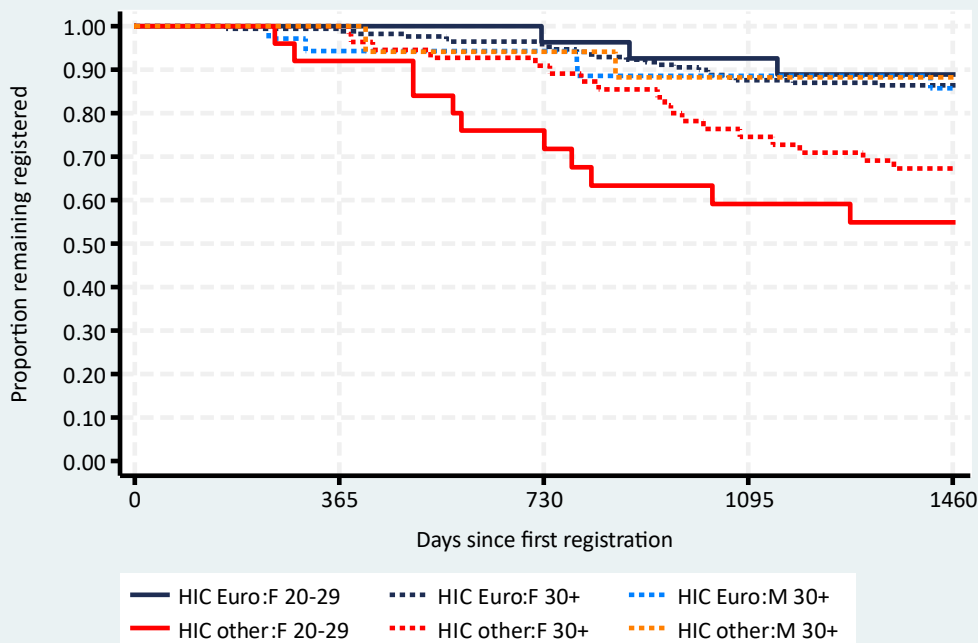


Table 1: Comparison of routes and nationalities, Counselling psychologists

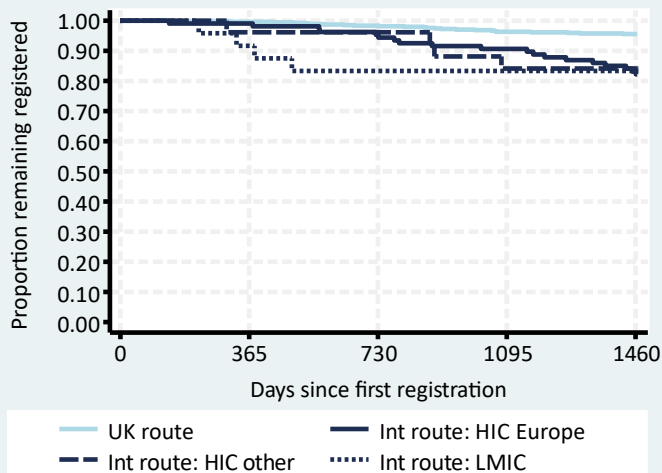
Route and country group	n	%	Retention rate	
			%	95% CI
UK route	545	78	95.6	93.5 to 97.0
Intl. route: HIC Europe	107	15	83.1	74.6 to 89.0
Intl. route: HIC other	26	4	84.1	63.1 to 93.7
Intl. route: LMIC	24	3	83.3	61.5 to 93.4

Table 2: International route demographic groups, Counselling psychologists

Demographic group	n	%	Retention rate	
			%	95% CI
HIC Europe: Female 20-29	10	6	-	-
HIC Europe: Female 30+	82	52	84.1	74.2 to 90.4
HIC Europe: Male 20-29	1	1	-	-
HIC Europe: Male 30+	14	9	-	-
HIC other: Female 20-29	6	4	-	-
HIC other: Female 30+	14	9	-	-
HIC other: Male 20-29	1	1	-	-
HIC other: Male 30+	5	3	-	-
LMIC: Female 20-29	4	3	-	-
LMIC: Female 30+	15	10	-	-
LMIC: Male 20-29	1	1	-	-
LMIC: Male 30+	4	3	-	-

Table 3: Largest international route nationalities, Counselling psychologists

Country of nationality	n	%	Retention rate	
			%	95% CI
United Kingdom	20	13	90.0	65.6 to 97.4
Italy	18	11	-	-
Greece	17	11	-	-
Australia	16	10	-	-
Portugal	11	7	-	-
Poland	10	6	-	-
Romania	9	6	-	-
Spain	9	6	-	-
United States	8	5	-	-
South Africa	7	5	-	-



International route demographic groups

Only one group had sufficient numbers to calculate the retention rate, HIC Europe Females aged 30+. In other professions this group tends to have reasonable retention rates, though generally not as good as for LMIC. For Counselling psychologists, all non-UK routes end up at with the same retention rate. See Tables 1 & 2 for further details.

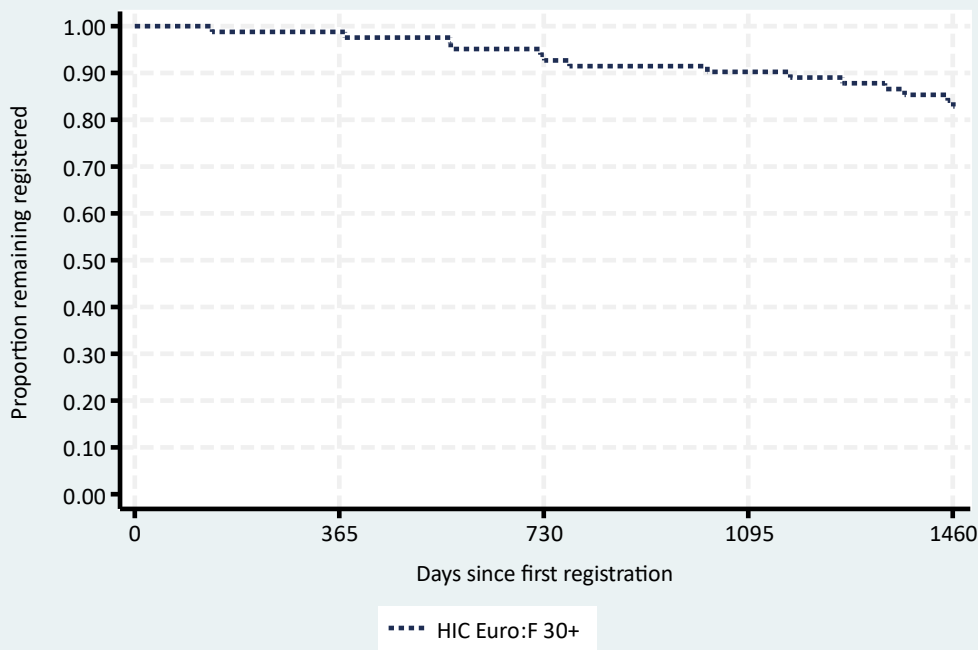


Table 1: Comparison of routes and nationalities, Educational psychologists

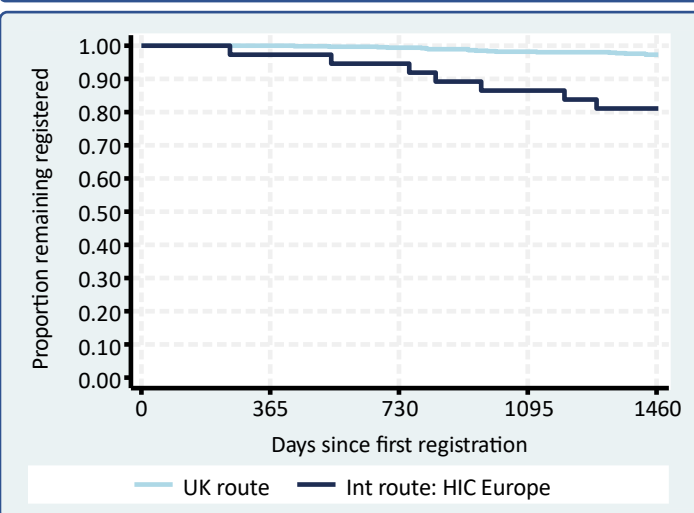
Route and country group	n	%	Retention rate	
			%	95% CI
UK route	665	91	97.3	95.7 to 98.3
Intl. route: HIC Europe	37	5	81.1	64.4 to 90.5
Intl. route: HIC other	19	3	-	-
Intl. route: LMIC	9	1	-	-

Table 2: International route demographic groups, Educational psychologists

Demographic group	n	%	Retention rate	
			%	95% CI
HIC Europe: Female 20-29	7	11	-	-
HIC Europe: Female 30+	22	34	90.9	68.3 to 97.7
HIC Europe: Male 20-29	2	3	-	-
HIC Europe: Male 30+	6	9	-	-
HIC other: Female 20-29	5	8	-	-
HIC other: Female 30+	10	15	-	-
HIC other: Male 20-29	0	0	-	-
HIC other: Male 30+	4	6	-	-
LMIC: Female 20-29	1	2	-	-
LMIC: Female 30+	7	11	-	-
LMIC: Male 20-29	0	0	-	-
LMIC: Male 30+	1	2	-	-

Table 3: Largest international route nationalities, Educational psychologists

Country of nationality	n	%	Retention rate	
			%	95% CI
Republic of Ireland	8	12	-	-
United Kingdom	8	12	-	-
Australia	7	11	-	-
Portugal	7	11	-	-
South Africa	7	11	-	-
United States	6	9	-	-
New Zealand	5	8	-	-
Greece	4	6	-	-
Italy	4	6	-	-
Netherlands	2	3	-	-



International route demographic groups

Only one group had sufficient numbers to calculate the retention rate, HIC Europe Females aged 30+. This group has better retention than HIC Europe in total, which is considerably lower than the UK rate. See Tables 1 & 2 for further details.

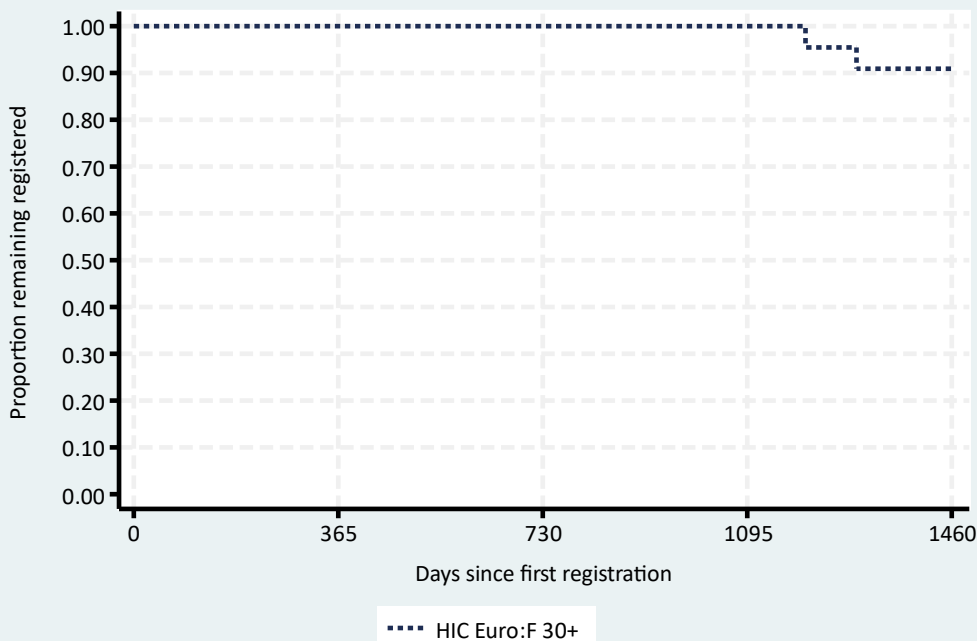


Table 1: Comparison of routes and nationalities, Forensic psychologists

Route and country group	n	%	Retention rate	
			%	95% CI
UK route	227	88	99.1	96.5 to 99.8
Intl. route: HIC Europe	23	9	95.7	72.9 to 99.4
Intl. route: HIC other	5	2	-	-
Intl. route: LMIC	4	2	-	-

Table 2: International route demographic groups, Forensic psychologists

Demographic group	n	%	Retention rate	
			%	95% CI
HIC Europe: Female 20-29	4	13	-	-
HIC Europe: Female 30+	16	50	-	-
HIC Europe: Male 20-29	0	0	-	-
HIC Europe: Male 30+	3	9	-	-
HIC other: Female 20-29	1	3	-	-
HIC other: Female 30+	2	6	-	-
HIC other: Male 20-29	0	0	-	-
HIC other: Male 30+	2	6	-	-
LMIC: Female 20-29	0	0	-	-
LMIC: Female 30+	3	9	-	-
LMIC: Male 20-29	1	3	-	-
LMIC: Male 30+	0	0	-	-

Table 3: Largest international route nationalities, Forensic psychologists

Country of nationality	n	%	Retention rate	
			%	95% CI
United Kingdom	4	13	-	-
Netherlands	3	9	-	-
Poland	3	9	-	-
Romania	3	9	-	-
Spain	3	9	-	-
France	2	6	-	-
Italy	2	6	-	-
Portugal	2	6	-	-
United States	2	6	-	-
Australia	1	3	-	-

Table 1: Comparison of routes and nationalities, Health psychologists

Route and country group	n	%	Retention rate	
			%	95% CI
UK route	80	82	98.8	91.5 to 99.8
Intl. route: HIC Europe	11	11	-	-
Intl. route: HIC other	6	6	-	-
Intl. route: LMIC	1	1	-	-

Table 2: International route demographic groups, Health psychologists

Demographic group	n	%	Retention rate	
			%	95% CI
HIC Europe: Female 20-29	0	0	-	-
HIC Europe: Female 30+	8	44	-	-
HIC Europe: Male 20-29	0	0	-	-
HIC Europe: Male 30+	3	17	-	-
HIC other: Female 20-29	0	0	-	-
HIC other: Female 30+	1	6	-	-
HIC other: Male 20-29	0	0	-	-
HIC other: Male 30+	5	28	-	-
LMIC: Female 20-29	0	0	-	-
LMIC: Female 30+	1	6	-	-
LMIC: Male 20-29	0	0	-	-
LMIC: Male 30+	0	0	-	-

Table 3: Largest international route nationalities, Health psychologists

Country of nationality	n	%	Retention rate	
			%	95% CI
Spain	4	22	-	-
Portugal	3	17	-	-
United States	3	17	-	-
Australia	1	6	-	-
Austria	1	6	-	-
Greece	1	6	-	-
Israel	1	6	-	-
Poland	1	6	-	-
Singapore	1	6	-	-
United Kingdom	1	6	-	-

Table 1: Comparison of routes and nationalities, Occupational psychologists

Route and country group	n	%	Retention rate	
			%	95% CI
UK route	96	86	91.7	84.0 to 95.7
Intl. route: HIC Europe	8	7	-	-
Intl. route: HIC other	4	4	-	-
Intl. route: LMIC	4	4	-	-

Table 2: International route demographic groups, Occupational psychologists

Demographic group	n	%	Retention rate	
			%	95% CI
HIC Europe: Female 20-29	1	6	-	-
HIC Europe: Female 30+	4	25	-	-
HIC Europe: Male 20-29	0	0	-	-
HIC Europe: Male 30+	3	19	-	-
HIC other: Female 20-29	0	0	-	-
HIC other: Female 30+	3	19	-	-
HIC other: Male 20-29	0	0	-	-
HIC other: Male 30+	1	6	-	-
LMIC: Female 20-29	1	6	-	-
LMIC: Female 30+	3	19	-	-
LMIC: Male 20-29	0	0	-	-
LMIC: Male 30+	0	0	-	-

Table 3: Largest international route nationalities, Occupational psychologists

Country of nationality	n	%	Retention rate	
			%	95% CI
South Africa	3	19	-	-
United Kingdom	3	19	-	-
Australia	2	13	-	-
Hungary	2	13	-	-
Italy	2	13	-	-
New Zealand	1	6	-	-
Poland	1	6	-	-
Romania	1	6	-	-
Singapore	1	6	-	-

Table 1: Comparison of routes and nationalities, Sport & exercise psychologists

Route and country group	n	%	Retention rate	
			%	95% CI
UK route	27	79	96.3	76.5 to 99.5
Intl. route: HIC Europe	4	12	-	-
Intl. route: HIC other	3	9	-	-
Intl. route: LMIC	0	0	-	-

Table 2: International route demographic groups, Sport & exercise psychologists

Demographic group	n	%	Retention rate	
			%	95% CI
HIC Europe: Female 20-29	0	0	-	-
HIC Europe: Female 30+	0	0	-	-
HIC Europe: Male 20-29	0	0	-	-
HIC Europe: Male 30+	4	57	-	-
HIC other: Female 20-29	1	14	-	-
HIC other: Female 30+	2	29	-	-
HIC other: Male 20-29	0	0	-	-
HIC other: Male 30+	0	0	-	-
LMIC: Female 20-29	0	0	-	-
LMIC: Female 30+	0	0	-	-
LMIC: Male 20-29	0	0	-	-
LMIC: Male 30+	0	0	-	-

Table 3: Largest international route nationalities, Sport & exercise psychologists

Country of nationality	n	%	Retention rate	
			%	95% CI
Australia	3	43	-	-
Greece	1	14	-	-
Republic of Ireland	1	14	-	-
Italy	1	14	-	-
United Kingdom	1	14	-	-