

INTRODUCTION

The HCPC has assessed the length of time that UK route registrants remained registered for following their first registration. Registrants who came through the UK route must have completed an approved training course in a UK institution. This analysis is hoped to contribute to wider workforce planning efforts.

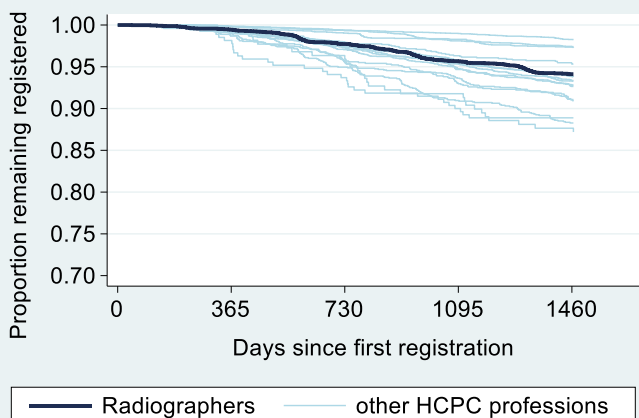
METHODS

All new UK route Radiographers who made their first registration between 01 Dec 2013 and 31 Nov 2017 were included in the analysis and their registration status at least four years later determined (n=5,544). The Kaplan-Meier method was used to estimate the percent remaining registered and the corresponding 95% confidence intervals for those estimates.

RESULTS

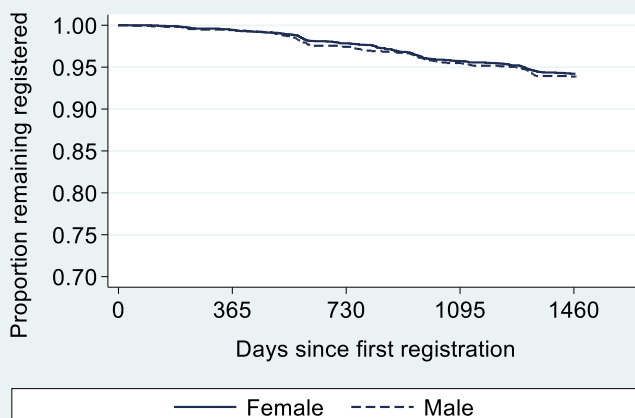
Overall retention

After two years 97.7% (95% CI: 97.3 to 98.1) of new Radiographers remained on the HCPC register and after four years 94.1% (95% CI: 93.5 to 94.7) remained registered.



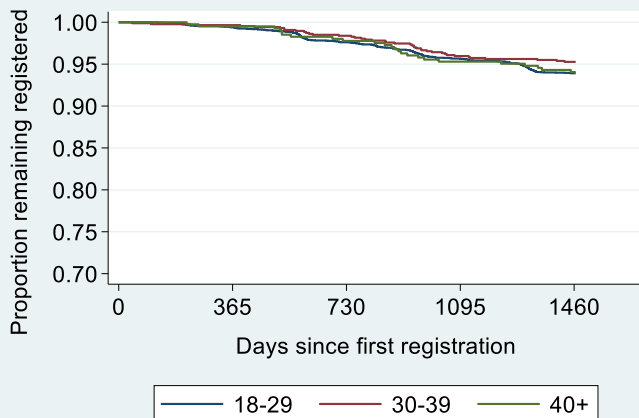
Gender / Sex

There was no meaningful difference between the proportions of females (94.2%) and of males (93.9%) remaining registered after four years. The majority of new Radiographer registrants were female (72%).



Age

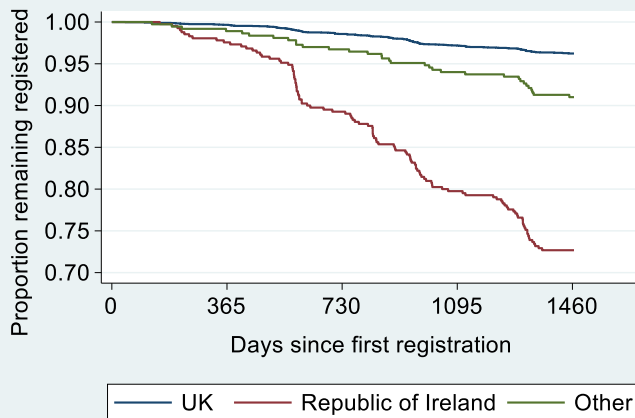
There was a very small difference in retention rates between the age groups. The majority (77%) of new Radiographer registrants were aged 18-29, while 16% were aged 30-39 and 7% were aged 40+.



Nationality

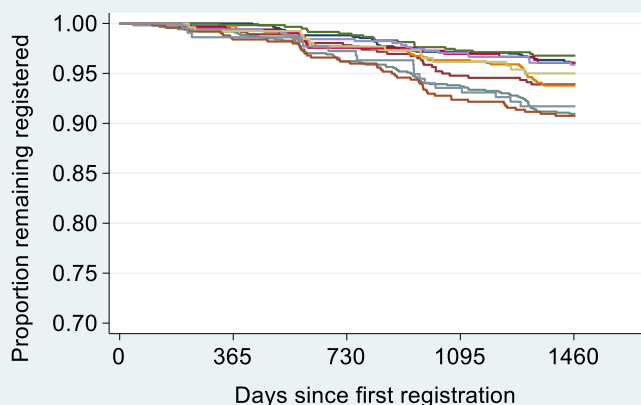
Retention varied considerably by nationality:

- UK = 96.2% retention (86% of registrants)
- Republic of Ireland = 72.7% (7% of registrants)
- Other = 91.0% (7% of registrants)

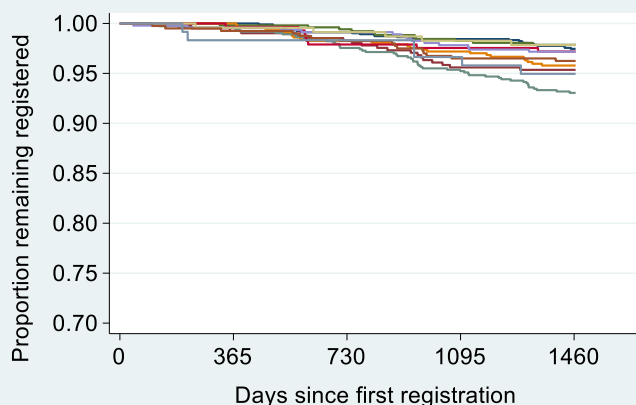


Location of training course provider

Retention rates varied between locations of training course providers with a 6.0% gap between the location with the highest rate (Midlands, 96.8%) and the location with the lowest rate (Scotland, 90.8%).



Restricting the analysis of training provider location to new UK route registrants of UK nationality narrowed the gap slightly to 4.8% between the location with the highest rate (Midlands, 97.9%) and the location with the lowest rate (London, 93.1%).



Location of institution providing qualification used for registration	n	% total	% UK nationality	Retention: all nationalities		Retention: UK nationality only	
				%	95% CI	%	95% CI
North East & Yorkshire	1,094	19.8	93.5	96.1	94.7 to 97.1	97.5	96.3 to 98.3
North West	459	8.3	89.1	93.9	91.3 to 95.8	95.4	92.8 to 97.0
Midlands	590	10.7	87.3	96.8	95.0 to 97.9	97.9	96.2 to 98.8
East of England	708	12.8	80.5	93.8	91.7 to 95.3	95.8	93.8 to 97.2
London	873	15.8	84.1	91.0	88.9 to 92.7	93.1	91.0 to 94.7
South East	329	5.9	86.6	96.1	93.3 to 97.7	97.2	94.5 to 98.6
South West	509	9.2	90.4	95.9	93.7 to 97.3	97.2	95.2 to 98.4
Wales	261	4.7	88.9	95.0	91.5 to 97.1	97.8	94.9 to 99.1
Scotland	498	9.0	80.3	90.8	87.9 to 93.0	96.3	93.9 to 97.7
Northern Ireland	217	3.9	54.8	91.7	87.2 to 94.7	95.0	89.1 to 97.7

CONCLUSIONS

The vast majority of new UK route Radiographers remained on the HCPC register four years after their first registration with around 1 in 17 having left by then.

The greatest variation was observed in nationality, with UK route registrants of non-UK nationalities having lower retention rates than UK route registrants of UK nationality.

The nationality effect appeared to be the main driver behind the variation in retention rates between locations of training course providers.